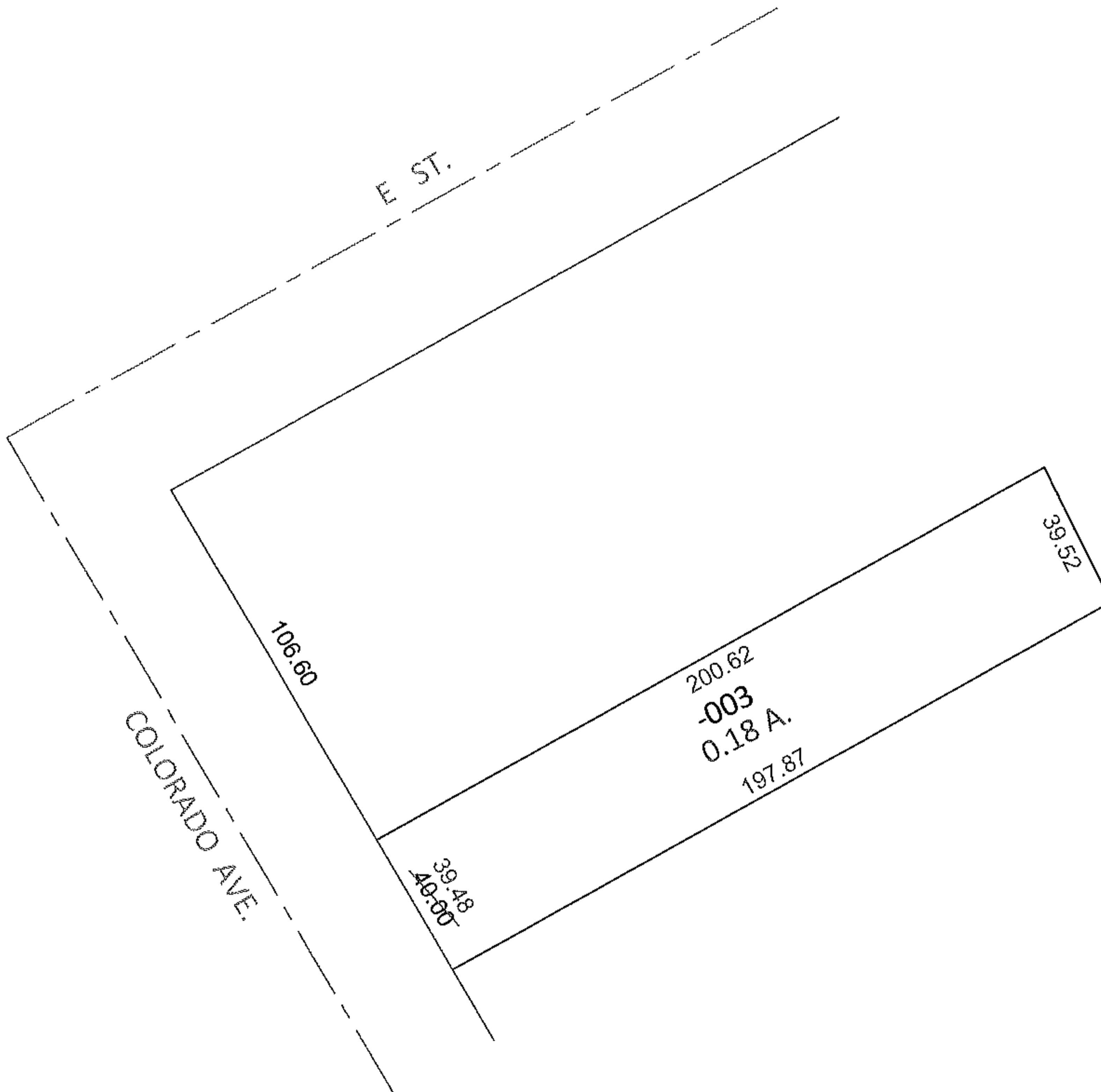
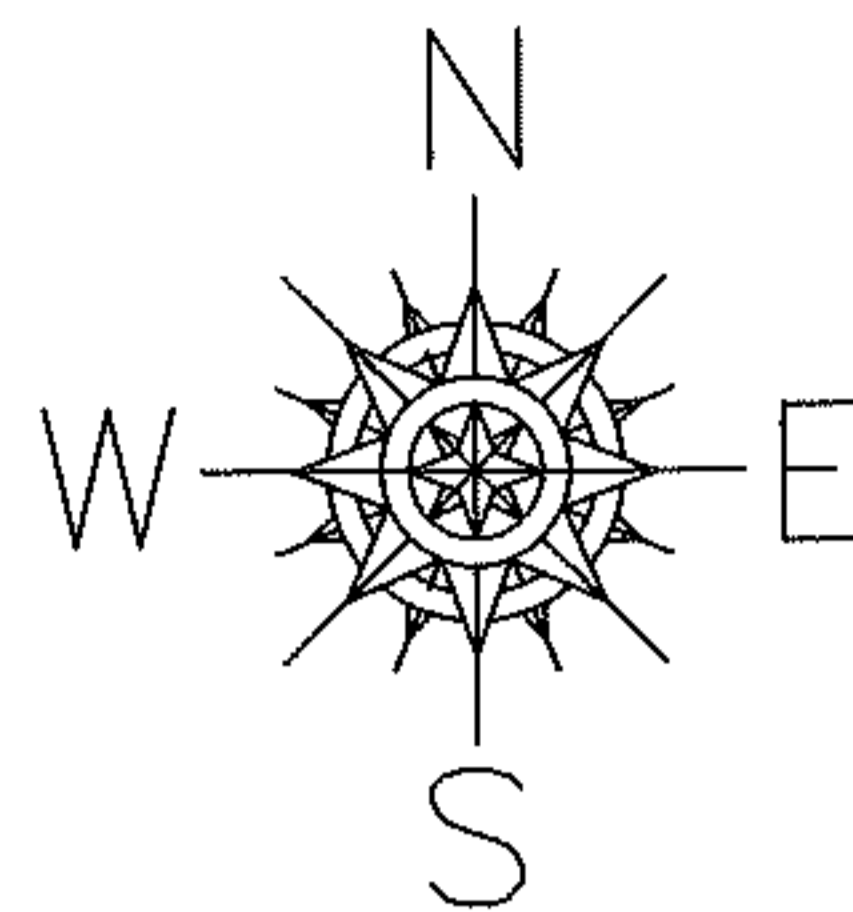


PARENT PARCEL: 02-01-003-110-003

12-02506-D

CHILD PARCEL: _____

STARTING POINT: INTERSECTION OF SOUTH LINE OF E ST. AND EAST LINE OF COLORADO AVE.



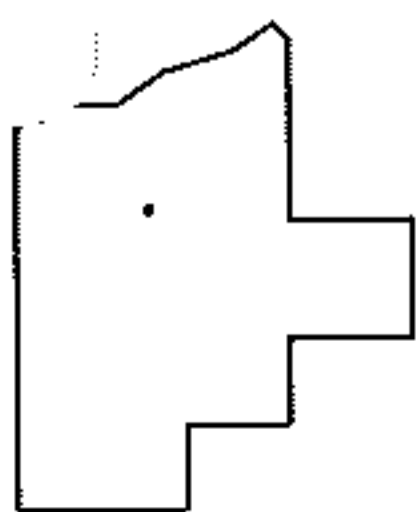
FRONTAGE AND DEPTH TO ACREAGE CORRECTION

02-01-003-110-003

0.18 A.

~~40 X 205~~

PER SURV. D.HAPONEK



SPLITS/DEEDS PROCESSED

LORAIN COUNTY TAX MAP DEPARTMENT
226 MIDDLE AVE. ELYRIA, OHIO

SURVEYED BY: DANE A. HAPONEK

CLOSURE: .00:10,000

MAP PAGE(S): 2-01-003-B

APPROVED BY: RRM DATE: 5-11-12

SCALE: 1"= 50' PRIOR INST.: OR 1424/481