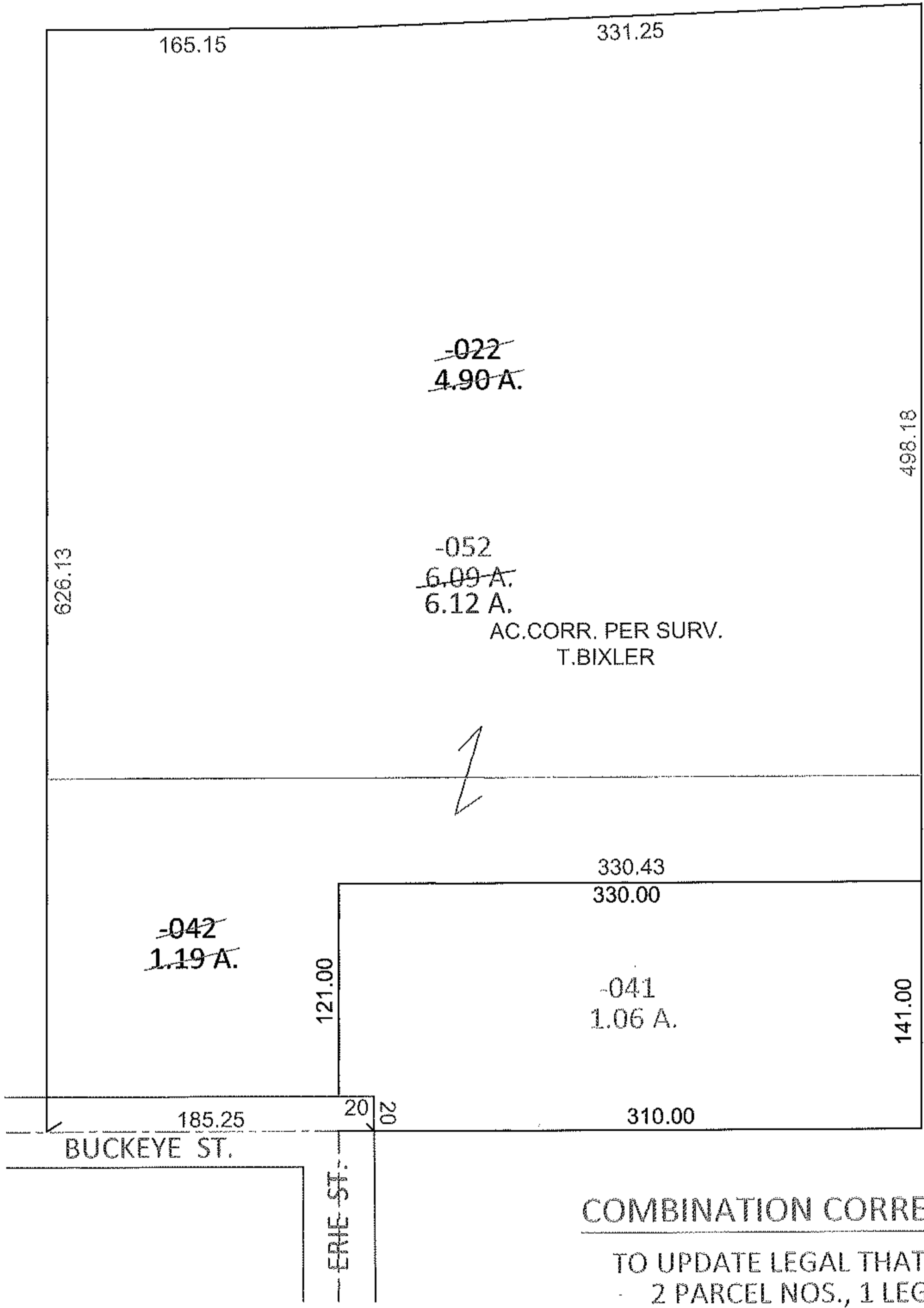
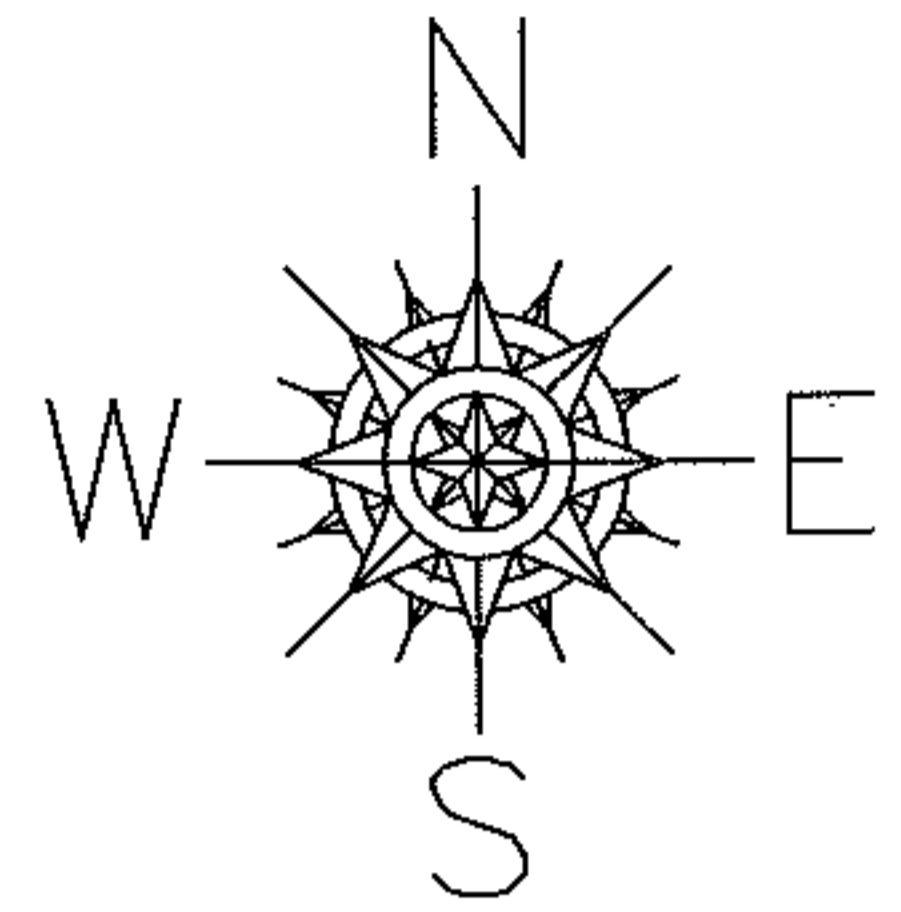


PARENT PARCEL: 05-00-012-101-022, -042

CHILD PARCEL: 05-00-012-101-052

12-02499-C

STARTING POINT: INTERSECTION OF EAST R.O.W. LINE OF ERIE ST. AND EASTERLY EXTENSION OF C/L OF BUCKEYE ST.



COMBINATION CORRECTION

TO UPDATE LEGAL THAT HAD
2 PARCEL NOS., 1 LEGAL

SPLITS/DEEDS PROCESSED

LORAIN COUNTY TAX MAP DEPARTMENT
226 MIDDLE AVE. ELYRIA, OHIO

SURVEYED BY: TREVOR A. BIXLER

CLOSURE: .01:10,000

MAP PAGE(S): 5-00-012-A

APPROVED BY: RRM DATE: 4-24-12

SCALE: 1" = 100 PRIOR INST.: 20060179806