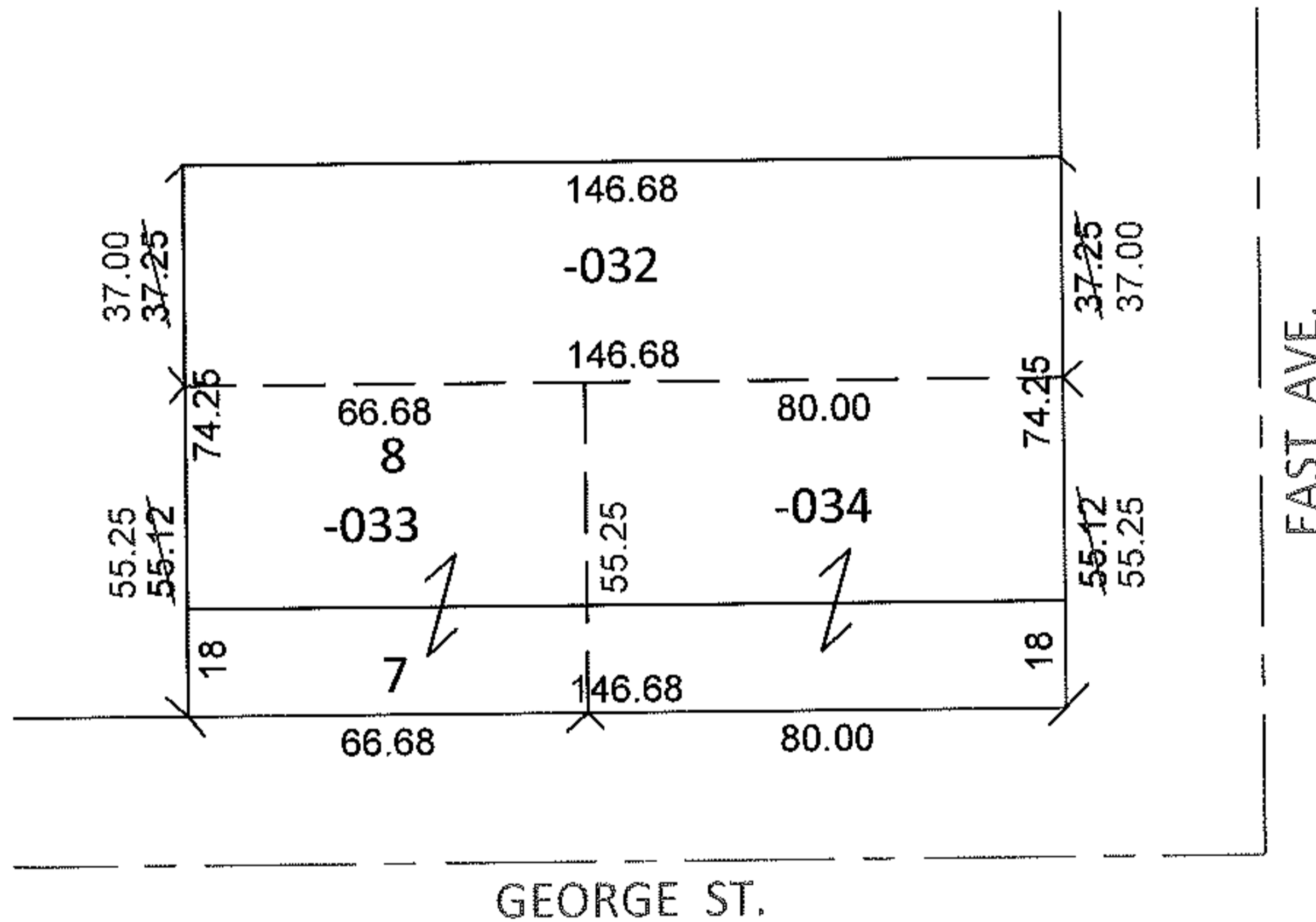
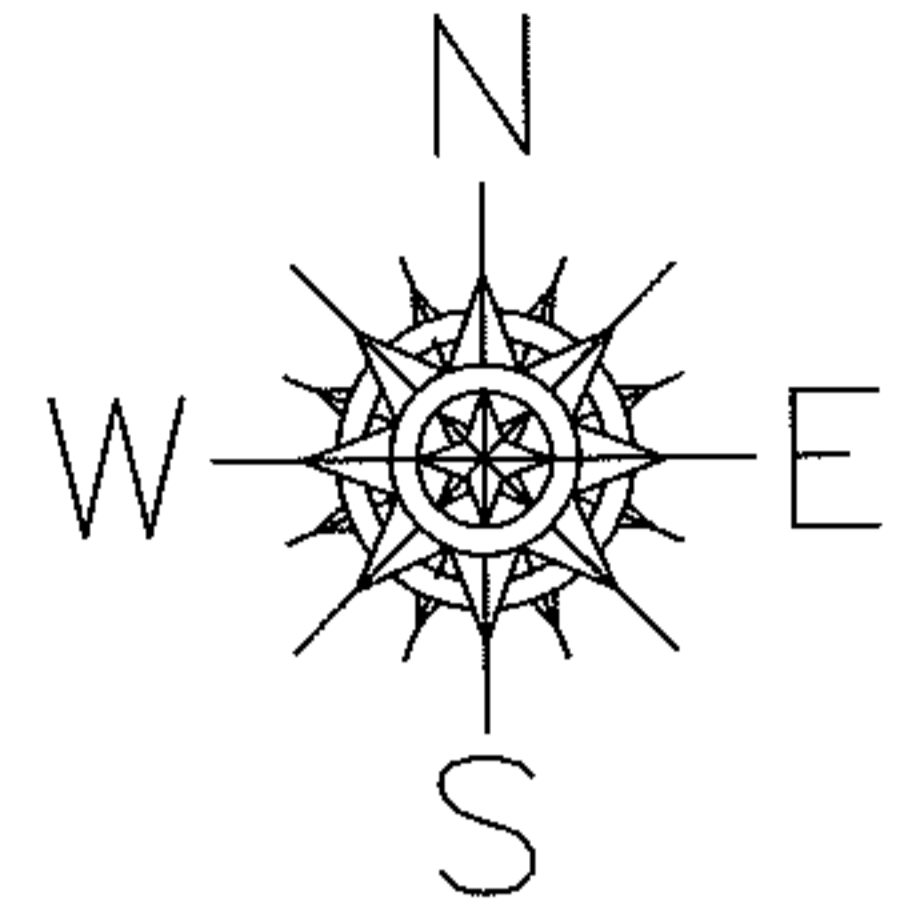


PARENT PARCEL: 06-26-014-102-032 THRU -034

12-02497-C

CHILD PARCEL: _____

STARTING POINT: S/L'S 7 & 8 IN D. HOWE'S ADD. (VOL.2 PG.8)

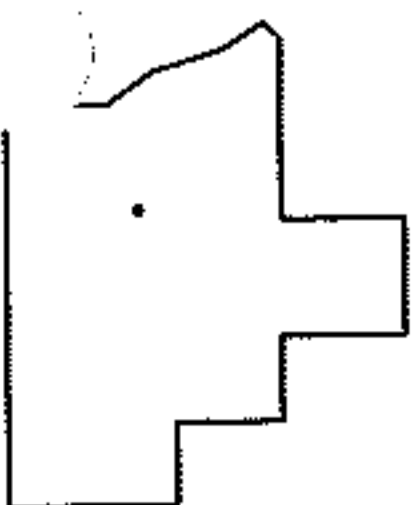


FRONTAGE AND DEPTH CORRECTION

06-26-014-102-032	06-26-014-102-033	06-26-014-102-034
37 X 146.68	66.68 X 55.25	55.25 X 80
37.12 X 147	67 X 55	55.12 X 80

PER PRIOR DEEDS

*OR 1126/535
 *19980541884
 *OR 651/845



SPLITS/DEEDS PROCESSED

LORAIN COUNTY TAX MAP DEPARTMENT
226 MIDDLE AVE. ELYRIA, OHIO

SURVEYED BY: N/A
 CLOSURE: N/A
 MAP PAGE(S): 6-138
 APPROVED BY: RRM DATE: 4-23-12
 SCALE: 1" = 50' PRIOR INST.: *SEE ABOVE