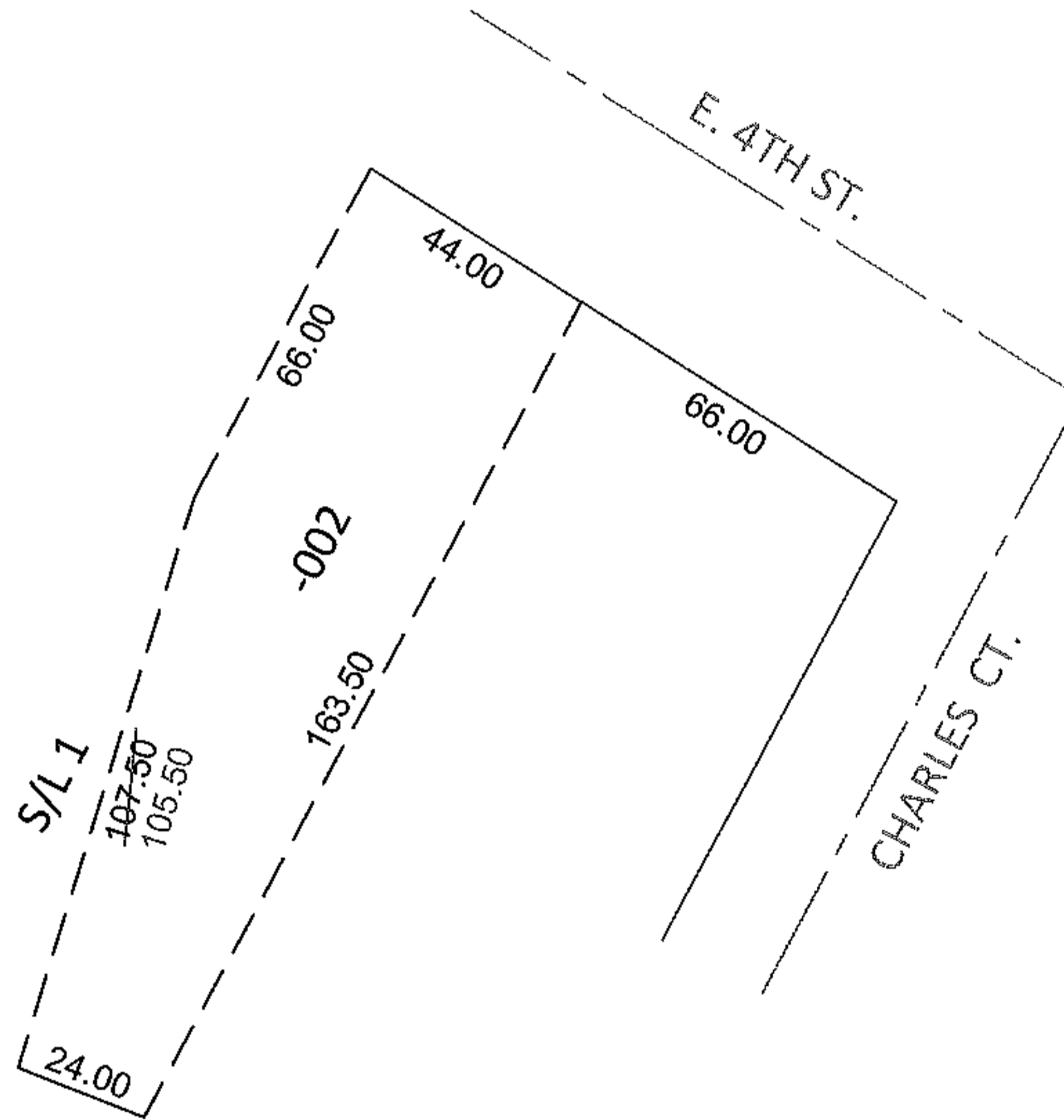
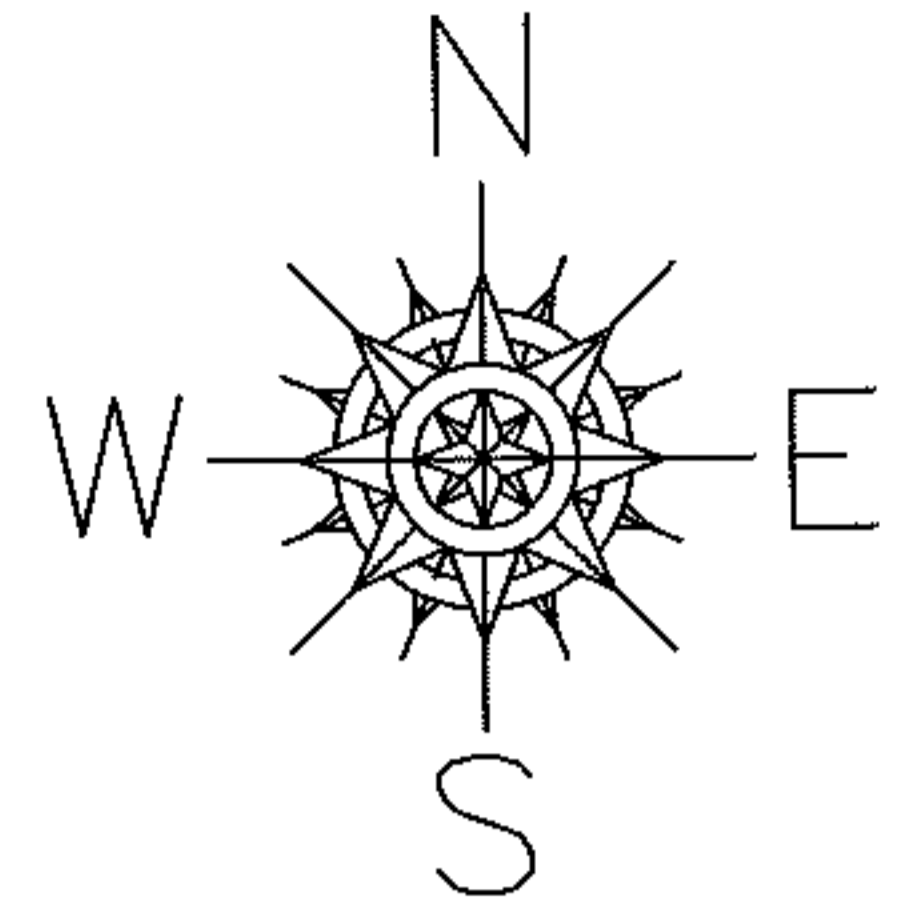


PARENT PARCEL: 06-25-098-101-002

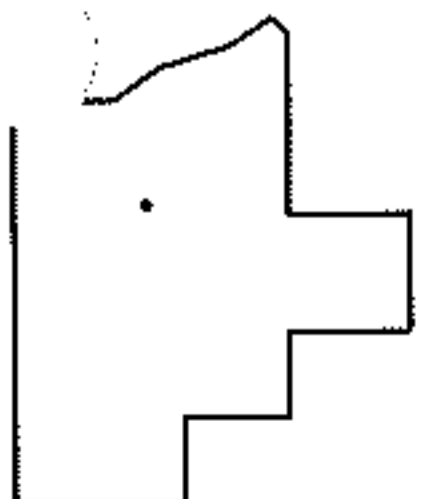
12-02495-C

CHILD PARCEL: _____

STARTING POINT: INTERSECTION OF SOUTH LINE OF E.4TH ST. AND WEST OF CHARLES CT.



MAP CORRECTION ONLY



SPLITS/DEEDS PROCESSED

LORAIN COUNTY TAX MAP DEPARTMENT
226 MIDDLE AVE. ELYRIA, OHIO

SURVEYED BY: N/A

CLOSURE: .01:10,000

MAP PAGE(S): 6-120

APPROVED BY: RRM DATE: 4-23-12

SCALE: 1"= 50' PRIOR INST.: 19980526992