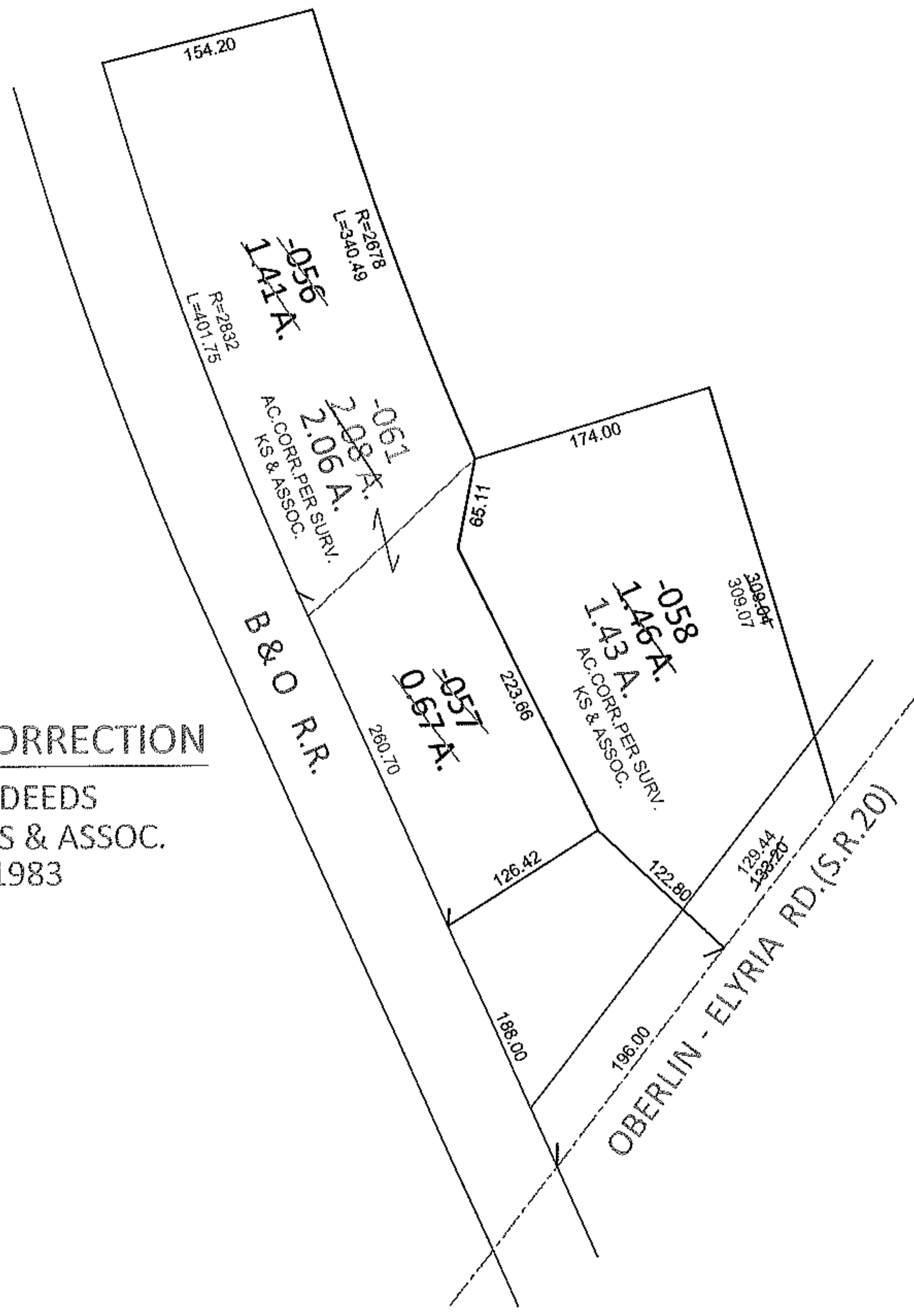
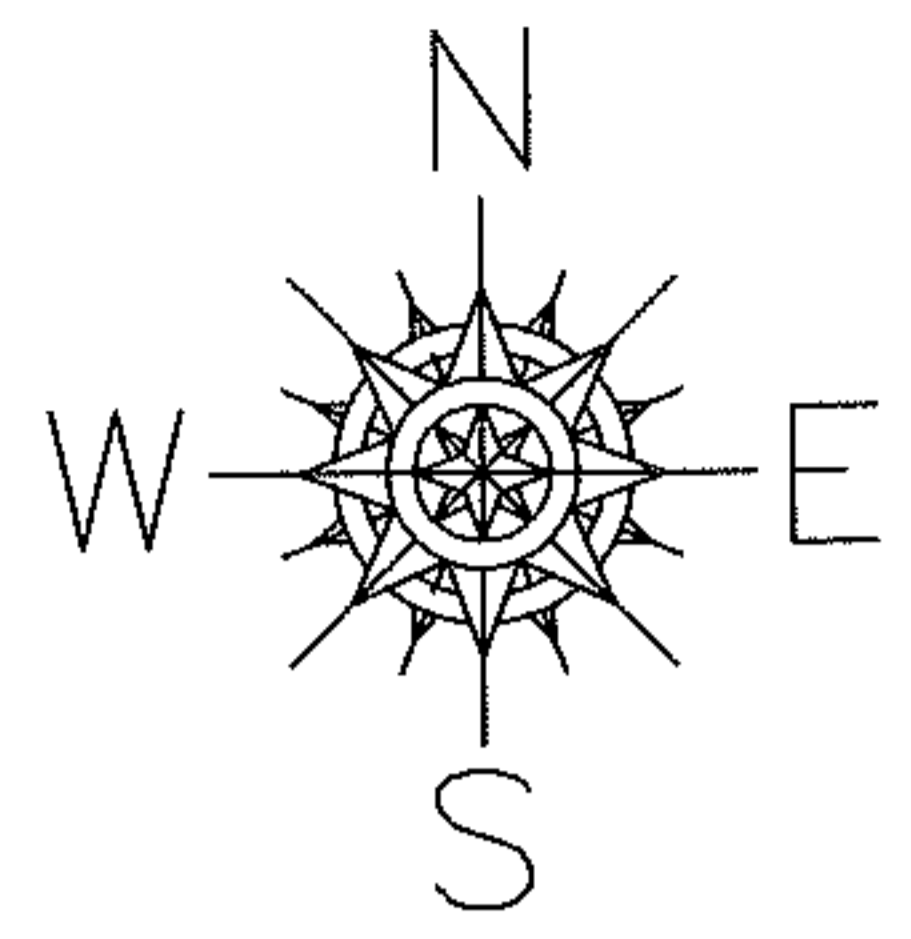


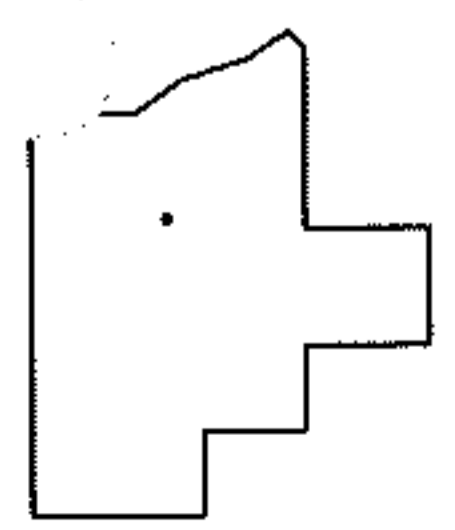
PARENT PARCEL: 10-00-003-115-056 THRU -058  
 CHILD PARCEL: 10-00-003-115-058, -061  
 STARTING POINT: INTERSECTION OF C/L OF S.R.20 AND EAST LINE OF B & O R.R.

**12-02494-A**



**COMBINATION CORRECTION**  
 PER PRIOR DEEDS  
 SURVEYED BY KS & ASSOC.  
 IN JULY 1983

\* OR 46/592  
 \* OR 384/554



**SPLITS/DEEDS PROCESSED**  
 LORAIN COUNTY TAX MAP DEPARTMENT  
 226 MIDDLE AVE. ELYRIA, OHIO

SURVEYED BY: KS & ASSOC.  
 CLOSURE: .01:10,000  
 MAP PAGE(S): 10-00-003-C  
 APPROVED BY: RRM DATE: 4-23-12  
 SCALE: 1" = 150 PRIOR INST.: \*SEE ABOVE