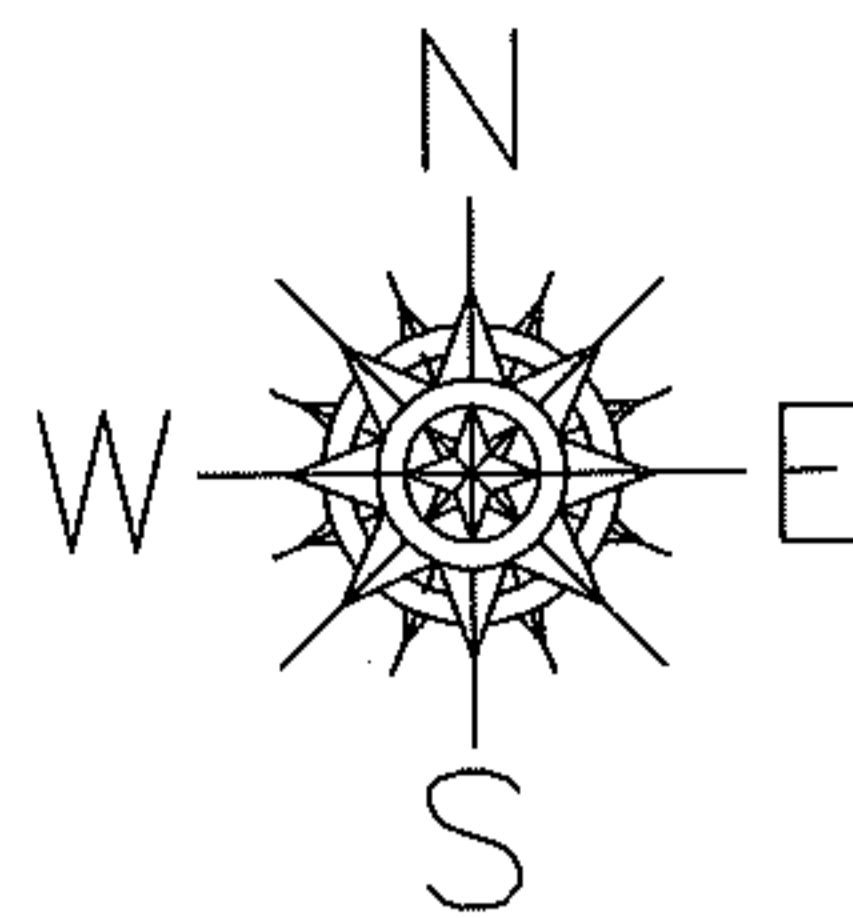


PARENT PARCEL: 06-25-002-101-055

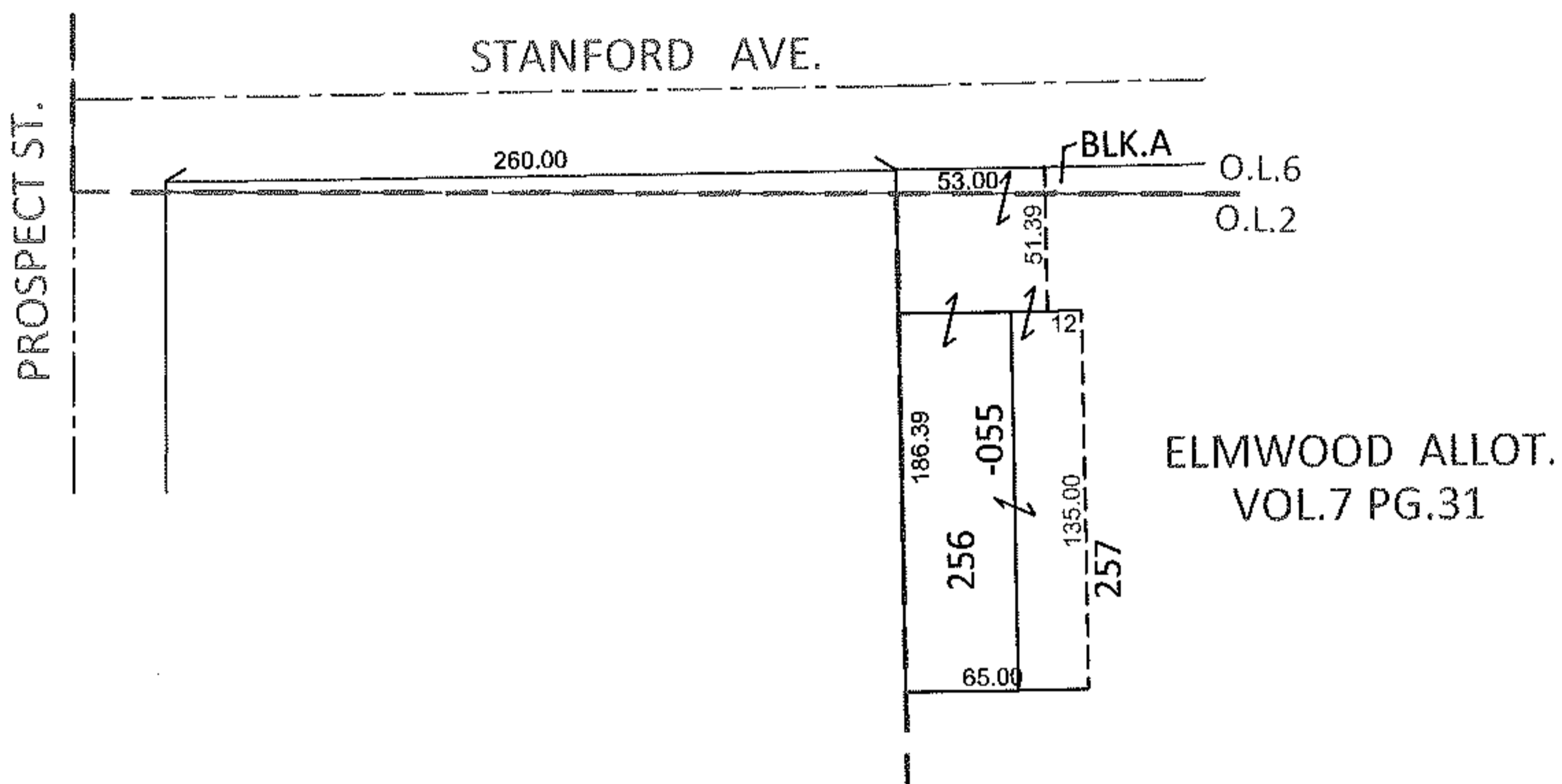
CHILD PARCEL:

STARTING POINT: INTERSECTION OF SOUTH LINE OF STANFORD AVE. AND EAST LINE OF PROSPECT ST.

12-02486-D



H.A. SHIVES ALLOT. NO.1
VOL.18 PG.22



FRONTAGE CORRECTION

06-25-002-101-055

53

60 X 186.39

PER SURV. M.MACKAY
REMOVE UPDATE LEGAL

SPLITS/DEEDS PROCESSED

LORAIN COUNTY TAX MAP DEPARTMENT
226 MIDDLE AVE. ELYRIA, OHIO

SURVEYED BY: MICHAEL MACKAY

CLOSURE: .00:10,000

MAP PAGE(S): 6-141

APPROVED BY: RRM DATE: 4-11-12

SCALE: 1"= 100 PRIOR INST.: 20120406063