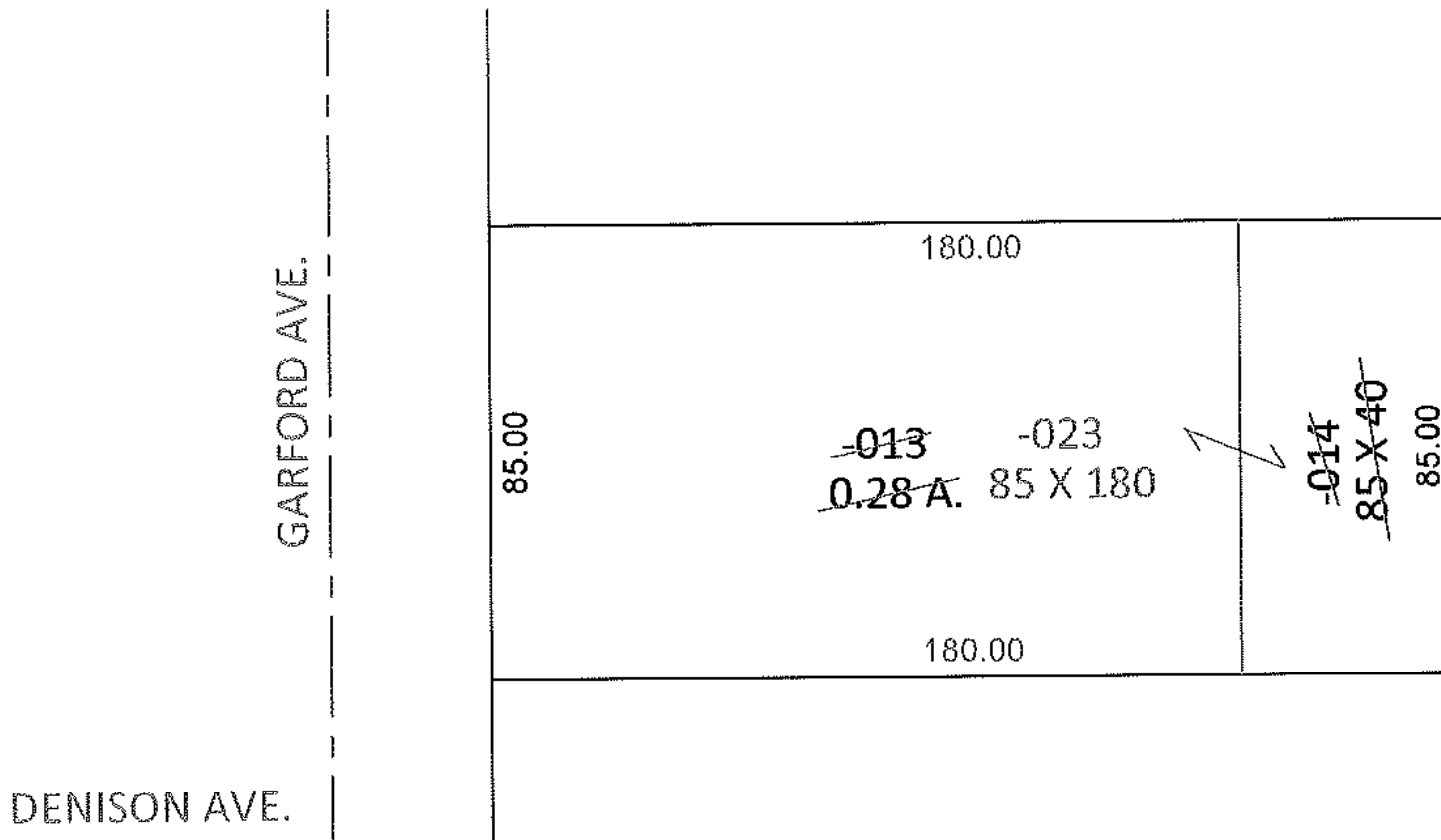
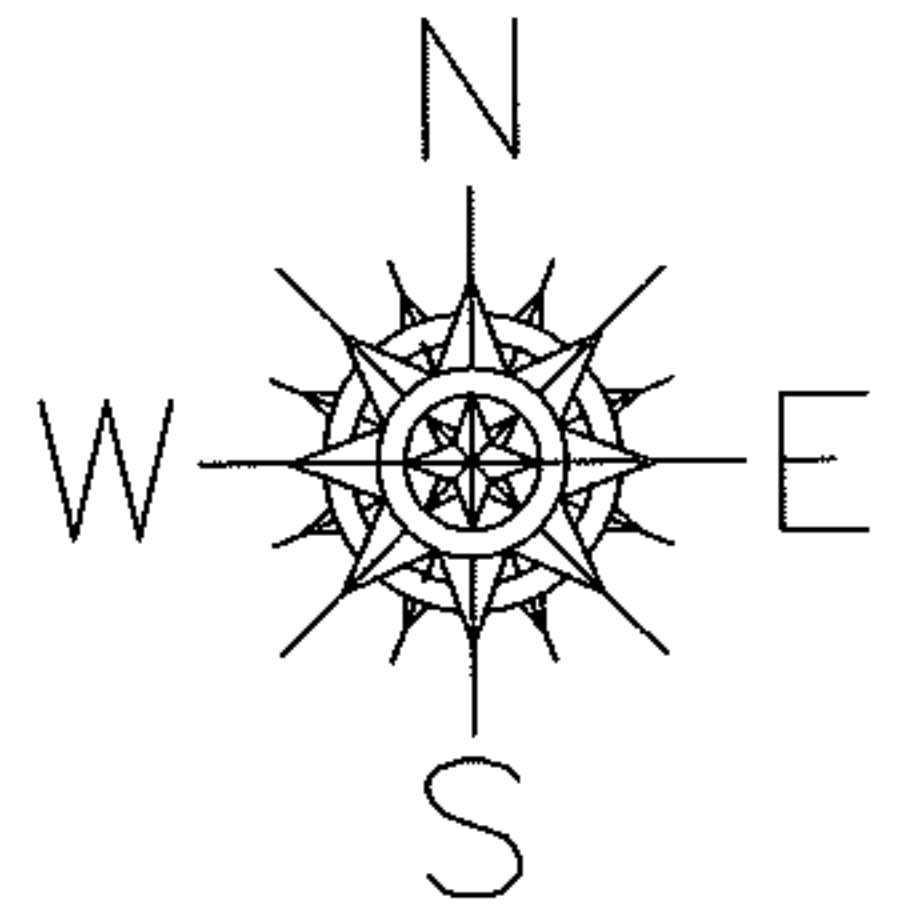


PARENT PARCEL: 06-25-005-113-013, -014

CHILD PARCEL: 06-25-005-113-023

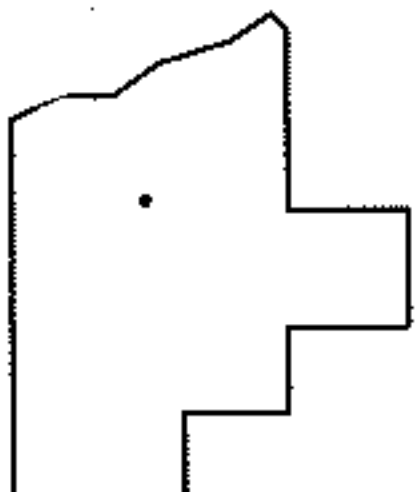
STARTING POINT: INTERSECTION OF EAST LINE OF GARFORD AVE. AND SOUTH LINE OF LAND CONVEYED TO WILLIAM J. & MARY JANE FITCH (DV 911/315)

12-02484-C



COMBINATION CORRECTION

TO CORRECT 1 LEGAL, 2 PARCEL NOS.
CORR. PER PRIOR DEEDS



SPLITS/DEEDS PROCESSED

LORAIN COUNTY TAX MAP DEPARTMENT
226 MIDDLE AVE. ELYRIA, OHIO

SURVEYED BY: N/A

CLOSURE: N/A

MAP PAGE(S): 6-122

APPROVED BY: RRM DATE: 4-6-12

SCALE: 1" = 50' PRIOR INST.: 20050074702