

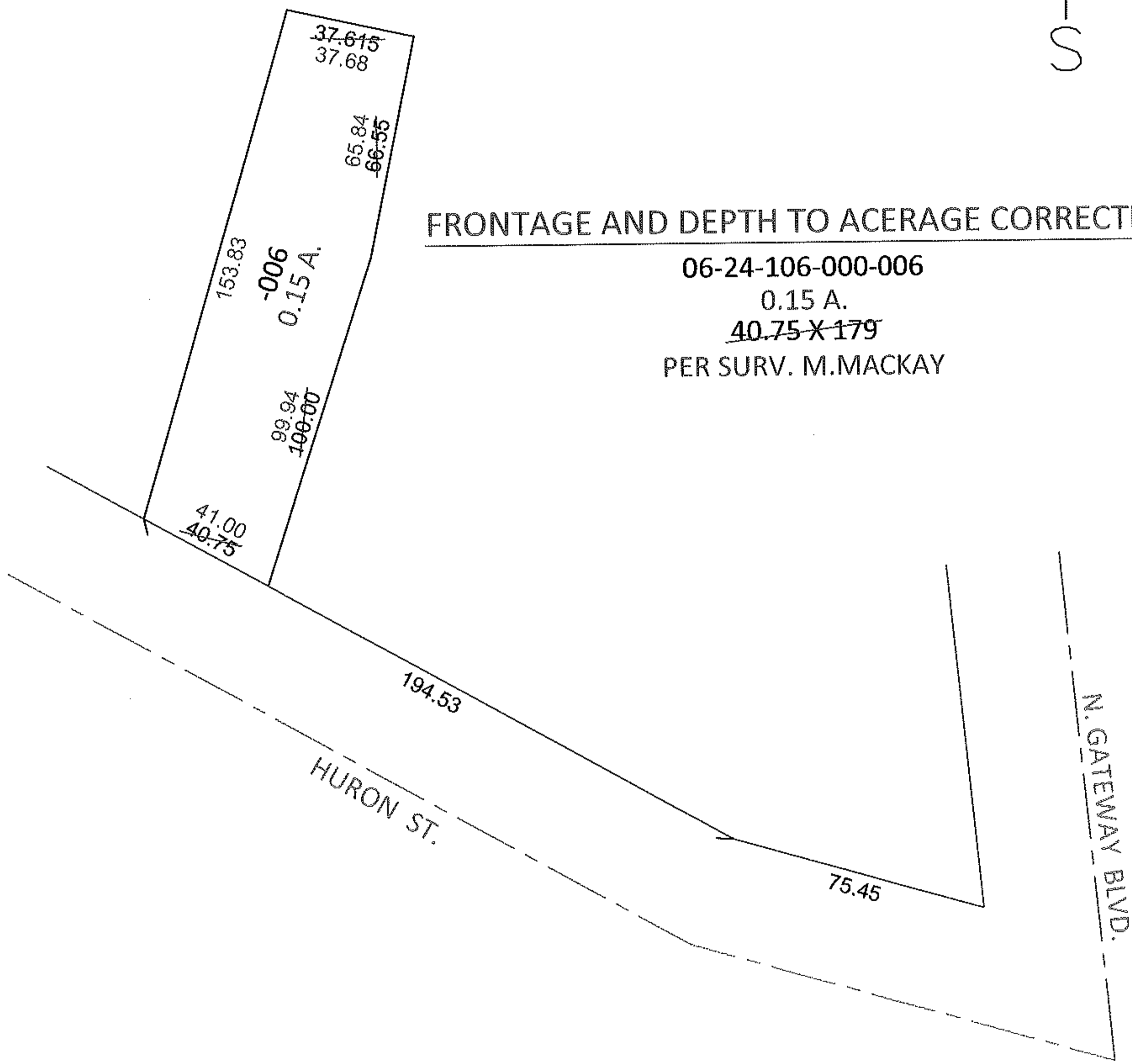
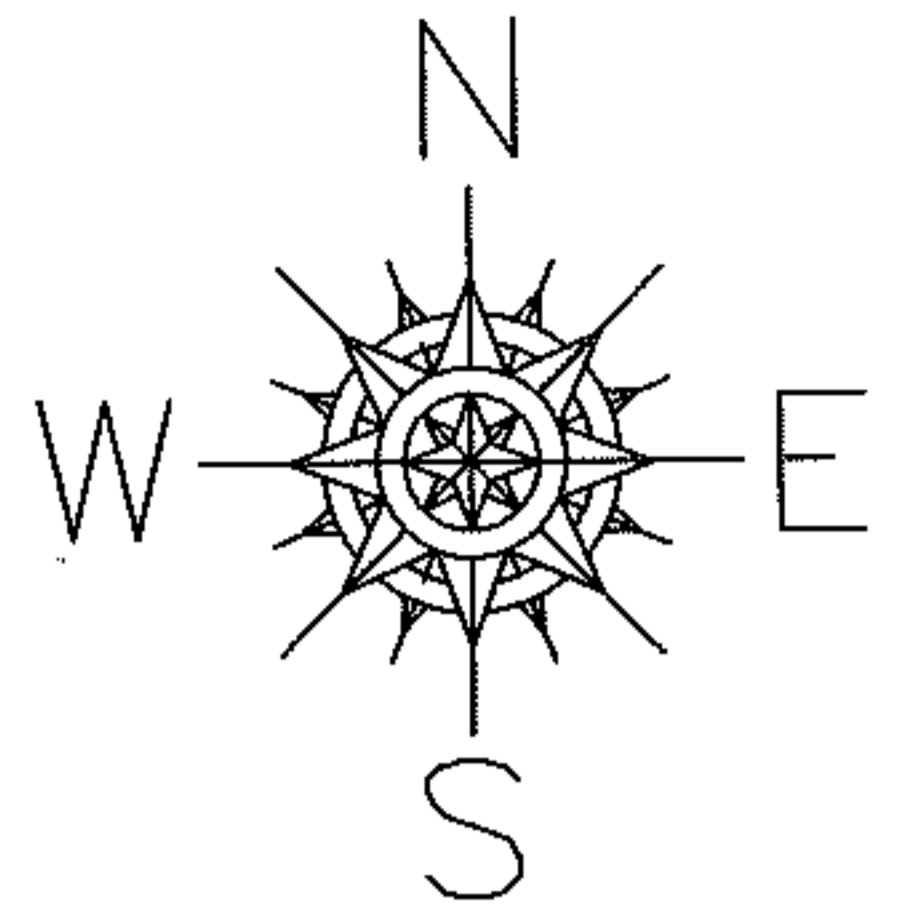
RASTER

PARENT PARCEL: 06-24-106-000-006

12-02483-X

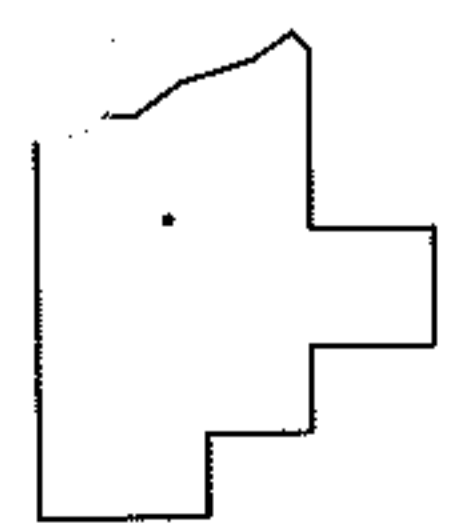
CHILD PARCEL:

STARTING POINT: INTERSECTION OF NORTH LINE OF HURON ST. AND WEST LINE OF N.GATEWAY BLVD.



FRONTAGE AND DEPTH TO ACERAGE CORRECTION.

06-24-106-000-006
0.15 A.
~~40.75 X 179~~
PER SURV. M.MACKAY



SPLITS/DEEDS PROCESSED
LORAIN COUNTY TAX MAP DEPARTMENT
226 MIDDLE AVE. ELYRIA, OHIO

SURVEYED BY: MICHAEL MACKAY
CLOSURE: .01:10,000
MAP PAGE(S): 6-99
APPROVED BY: RRM DATE: 4-5-12
SCALE: 1" = 50' PRIOR INST.: 20100342960