

RASTER

PARENT PARCEL: 07-00-008-113-041

CHILD PARCEL: XX-XX-XXX-XXX-XXX

STARTING POINT: XXXXXX

12-02480-C

FRONTAGE & DEPTH CORR.

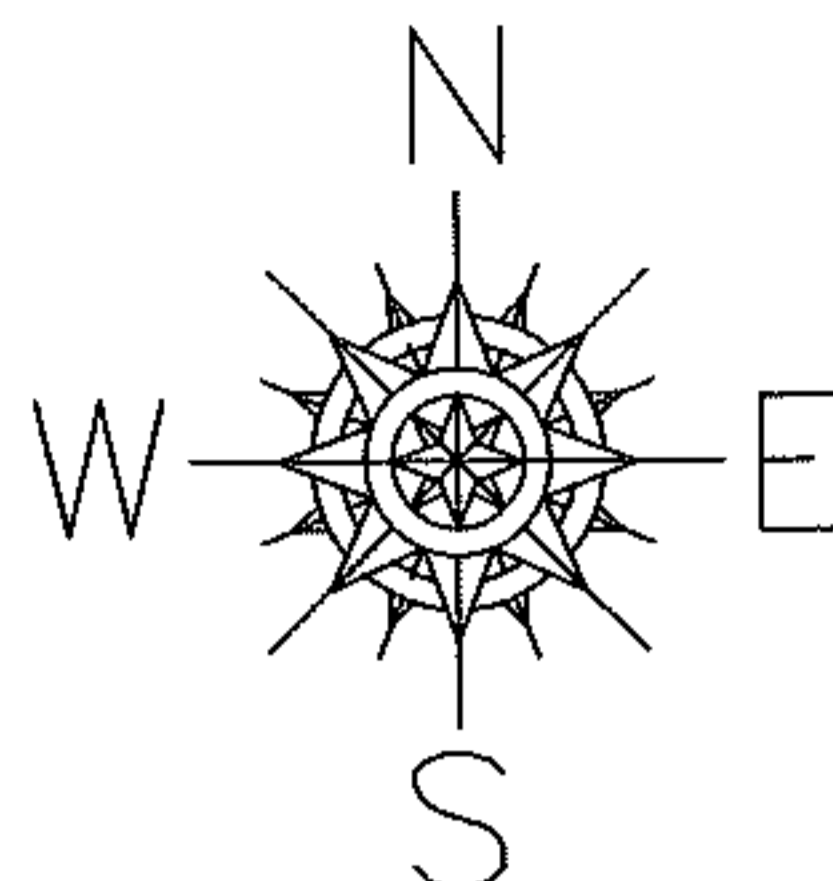
07-00-008-113-041

~~111.88 X 126~~

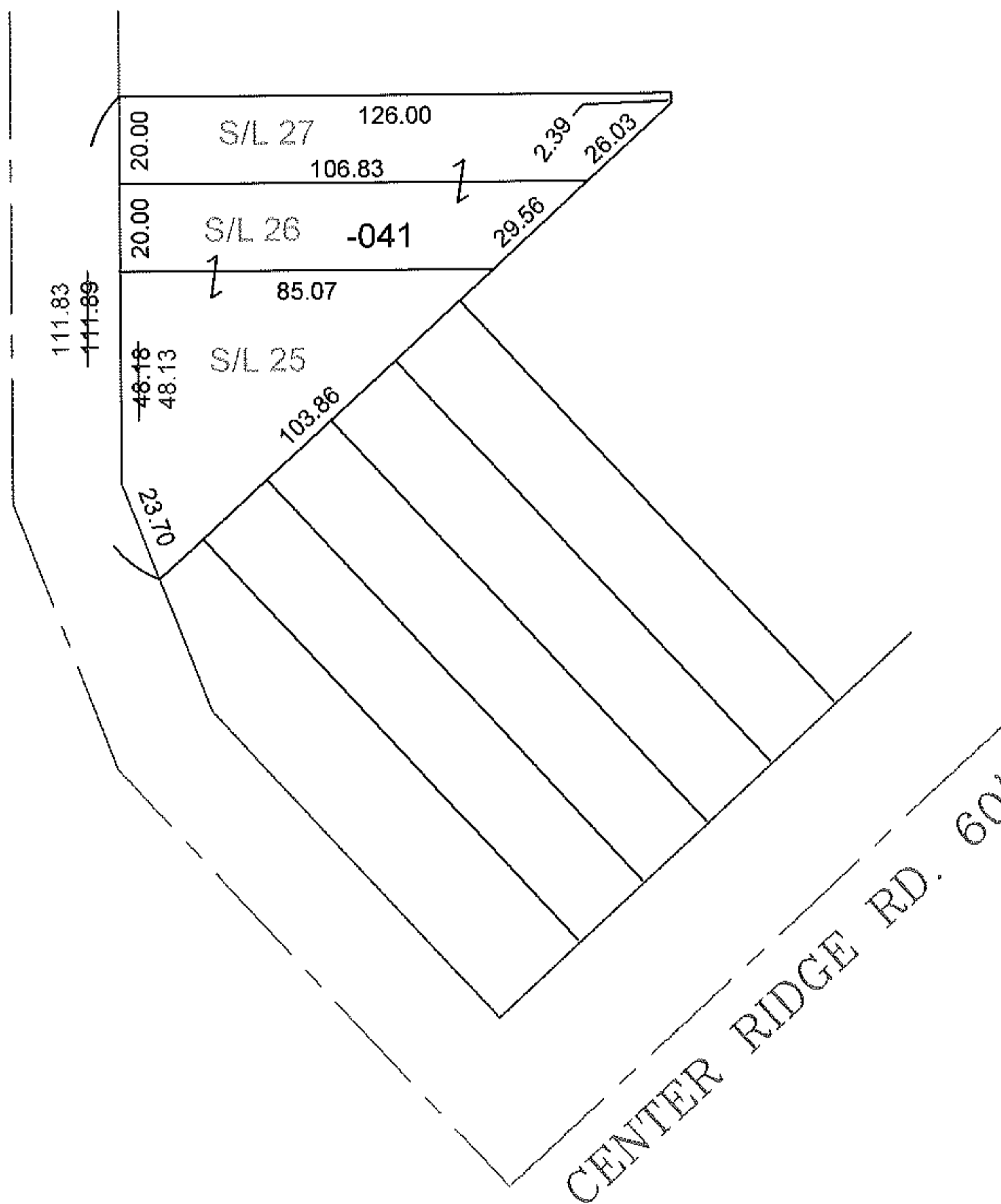
111.83 X 126.00

CORR. PER PLAT

PV. 10 PG. 11 & 12



BROAD BLVD. 50'



SPLITS/DEEDS PROCESSED

LORAIN COUNTY TAX MAP DEPARTMENT
226 MIDDLE AVE. ELYRIA, OHIO

SURVEYED BY: PLAT V10 PG. 11 & 12

CLOSURE: 0.00 : 10,000

MAP PAGE(S): 7-00-008-D

APPROVED BY: TJS DATE: 3/30/12

SCALE: 1" = 50' PRIOR INST.: DV XXXX/XXX