

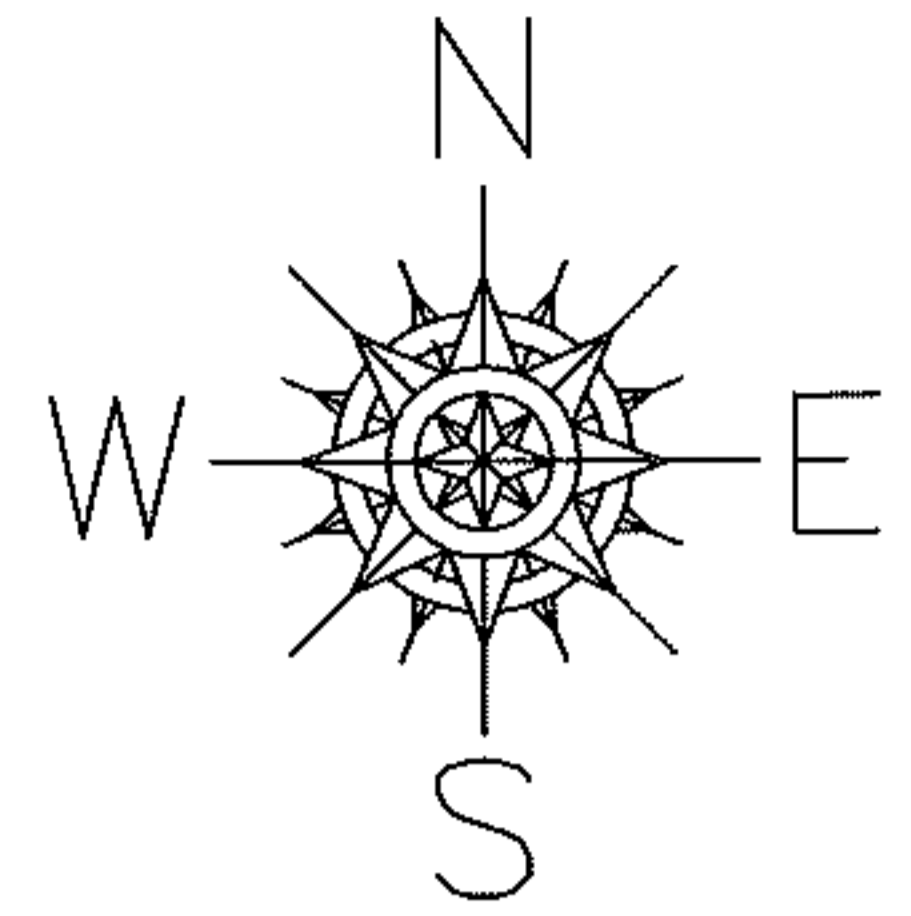
*Rusten*

PARENT PARCEL: 15-00-053-000-015

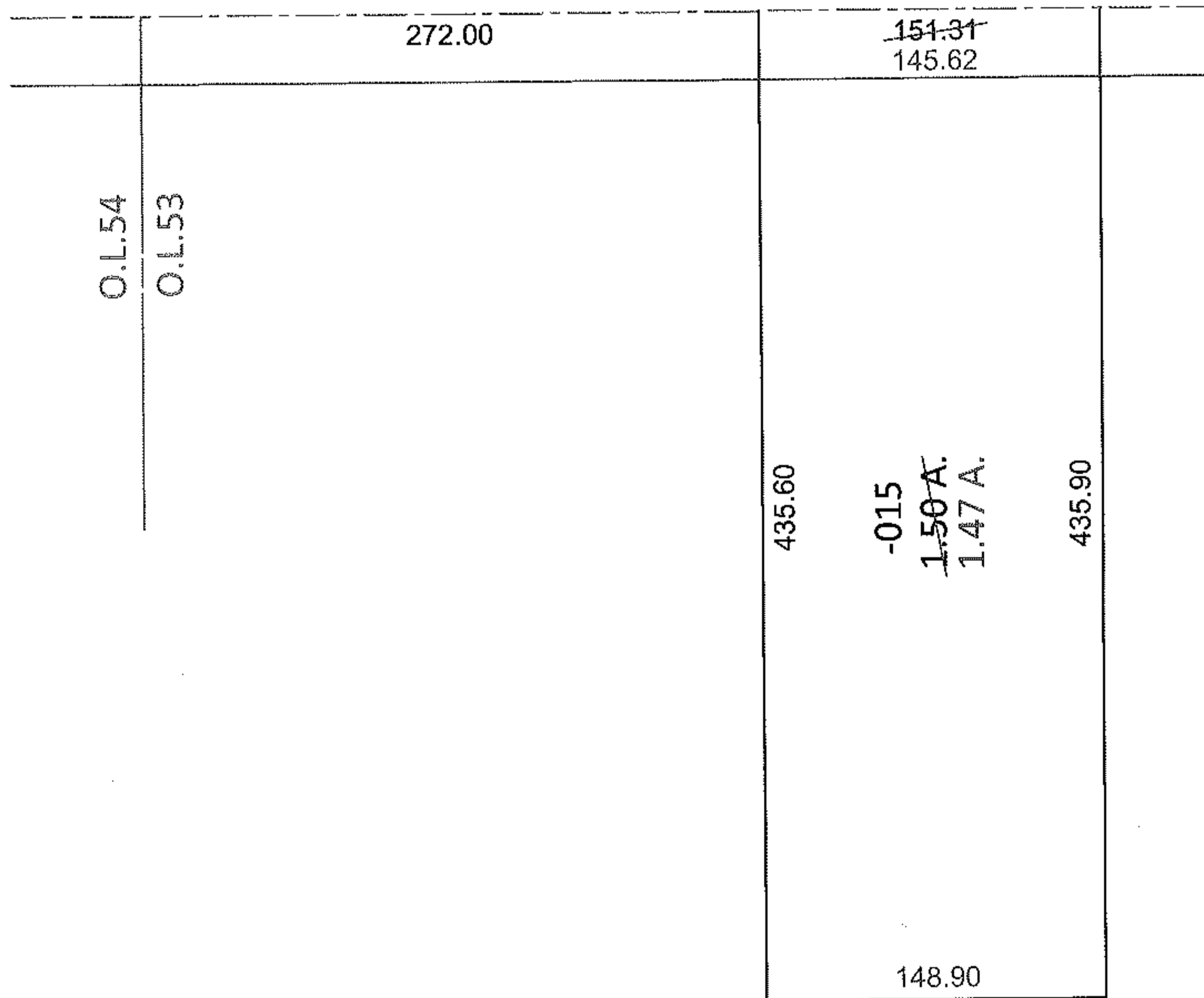
12-02478-X

CHILD PARCEL:

STARTING POINT: NORTHWEST CORNER OF O.L.53

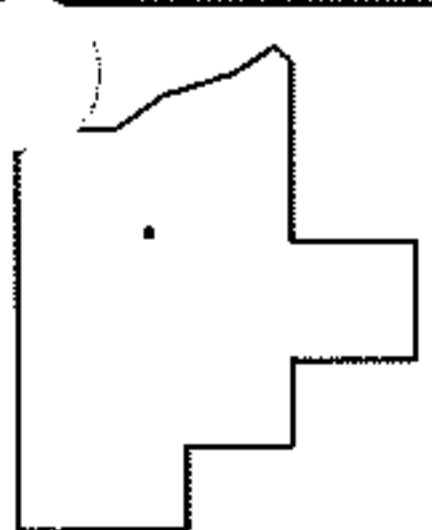


WAKEMAN - LAGRANGE - RICHFIELD RD. (S.R.303)



ACREAGE CORRECTION

PER SURV. J. POZYWAK ON MAY 27, 1971  
DOES NOT CLOSE  
WILL NEED A SURVEY BEFORE NEXT TRANS.



SPLITS/DEEDS PROCESSED

LORAIN COUNTY TAX MAP DEPARTMENT  
226 MIDDLE AVE. ELYRIA, OHIO

SURVEYED BY: JOHN POZYWAK

CLOSURE: 1:269.55

MAP PAGE(S): 15-H

APPROVED BY: RRM DATE: 4-3-12

SCALE: 1" = 100 PRIOR INST.: DV 1133/116