

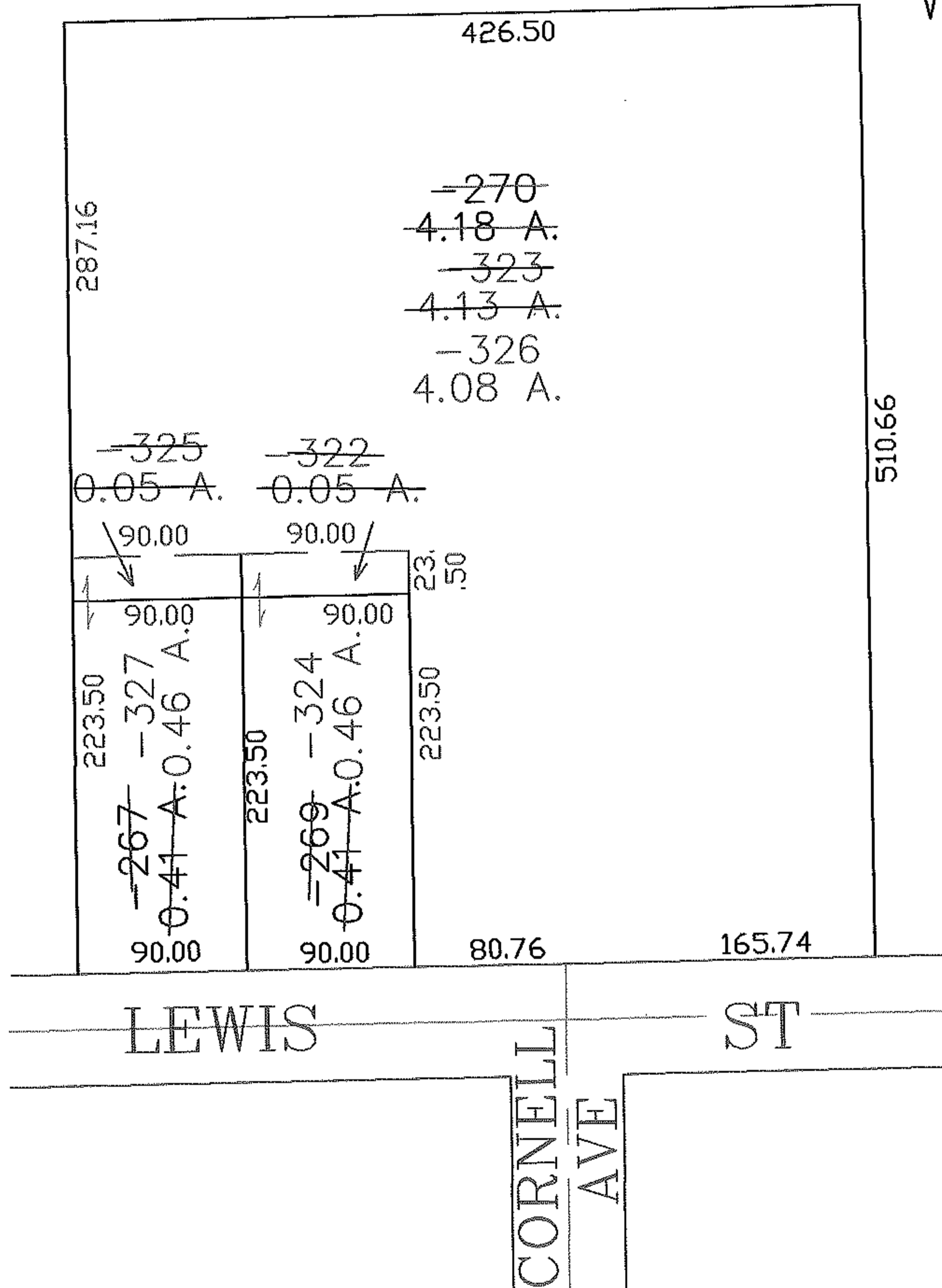
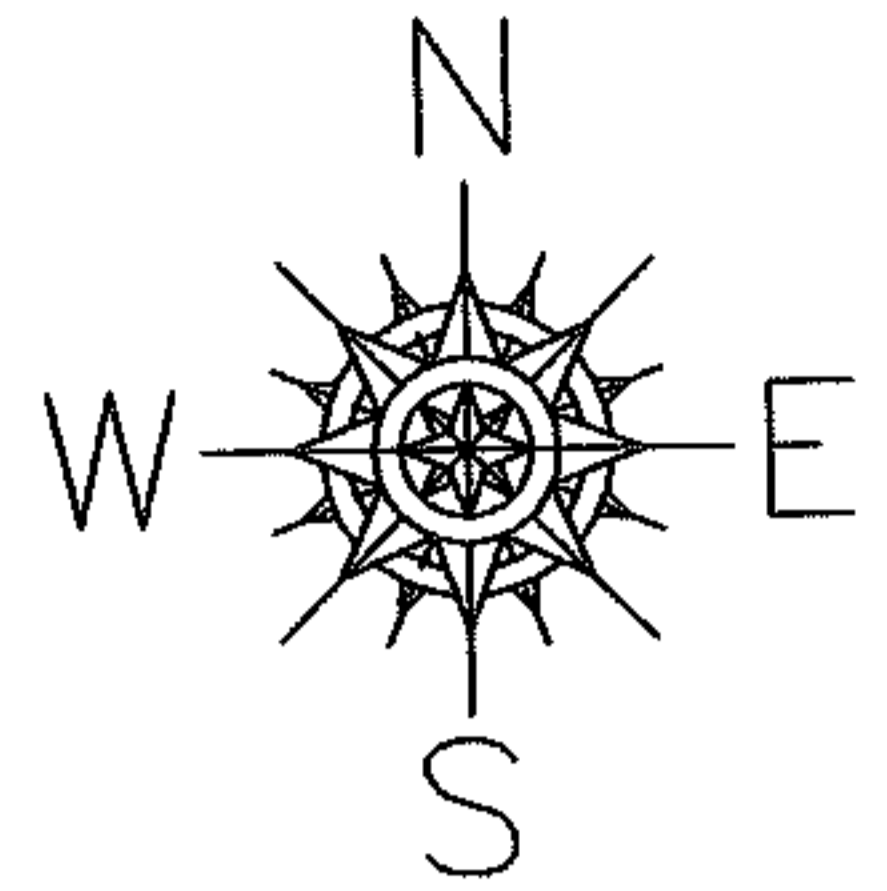
MASTER

PARENT PARCEL: 07-00-018-101-270, -269, -267

07-02474

CHILD PARCEL: 07-00-018-101-322 THRU 327

STARTING POINT: SIDELINE OF LEWIS ST & CENTERLINE OF CORNELL AVE



SPLITS/DEEDS PROCESSED

LORAIN COUNTY TAX MAP DEPARTMENT
226 MIDDLE AVE. ELYRIA, OHIO

SURVEYED BY: HOWARD SELEE

CLOSURE: 0.00 : 10.000

MAP PAGE(S): 07-00-018-B

APPROVED BY: JAH DATE: 11-14-07

SCALE: 1" = 100 PRIOR INSTRUMENT: 20040987355