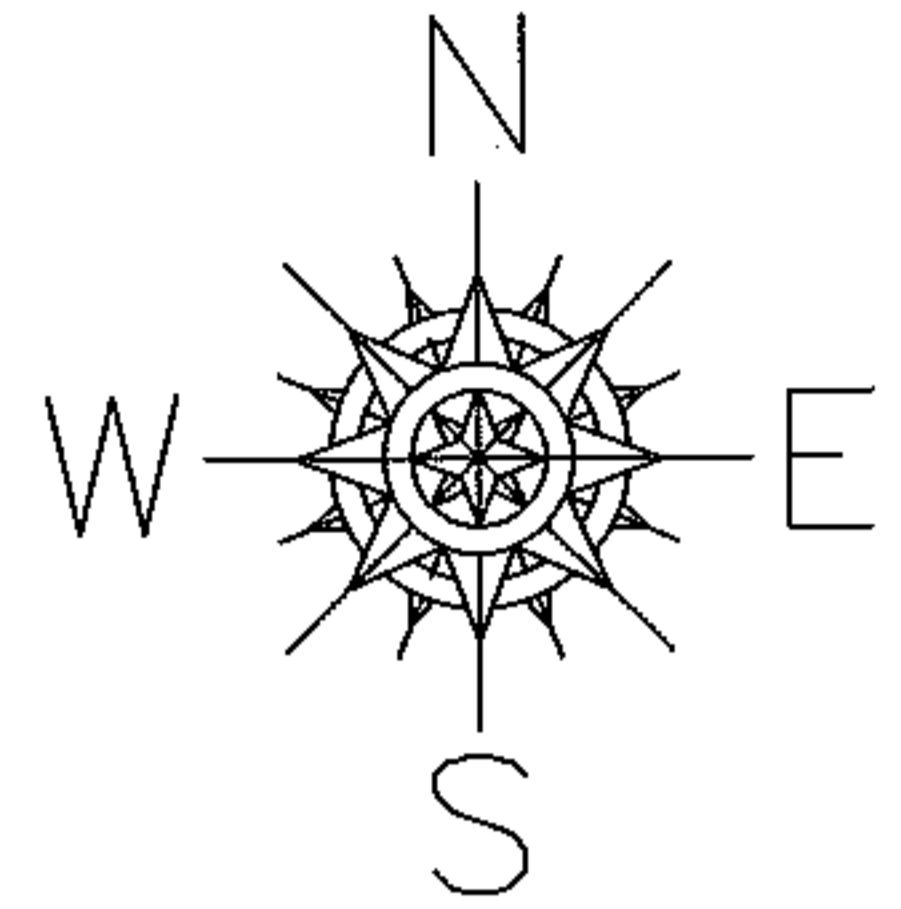


PARENT PARCEL: 02-01-006-156-043

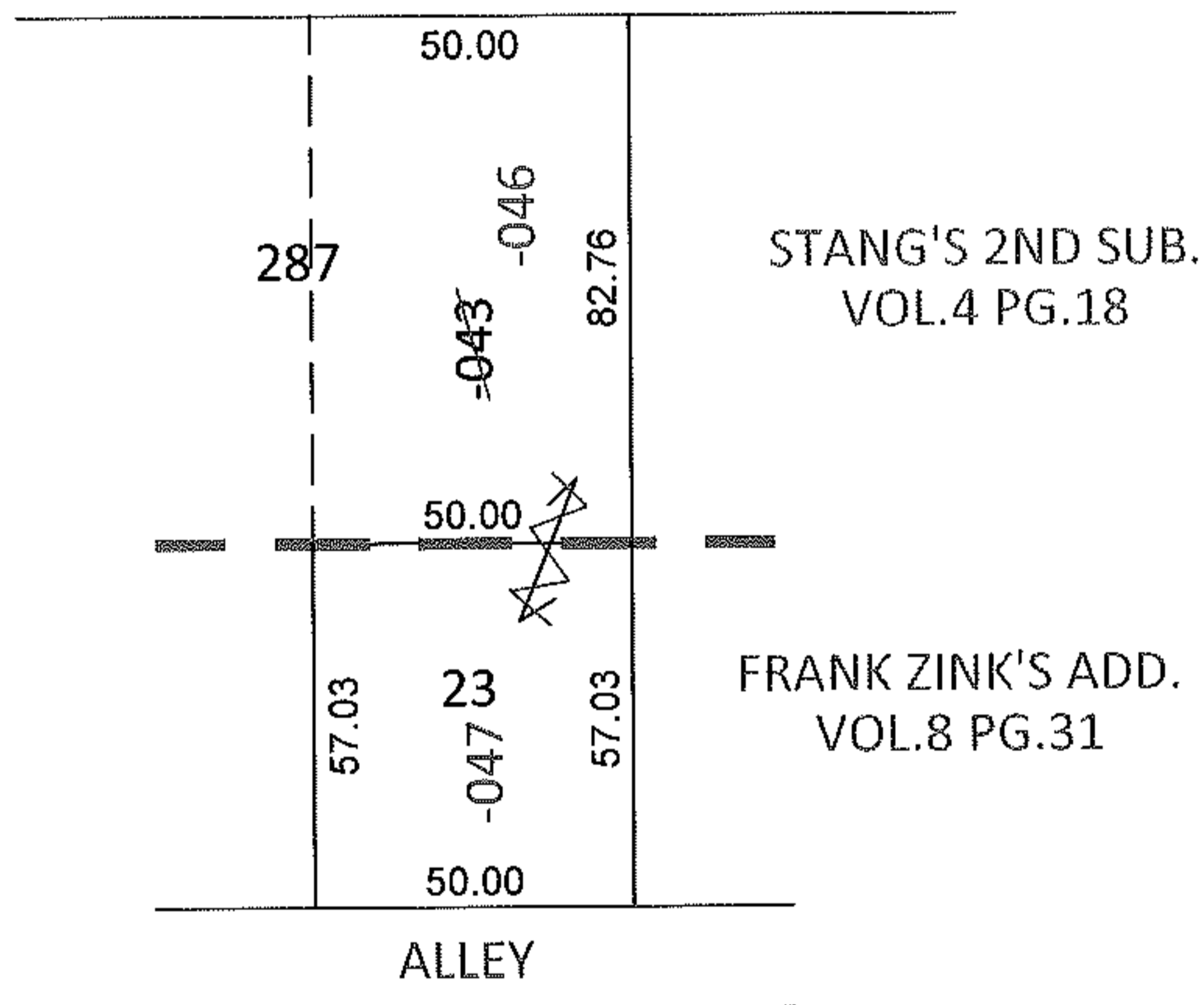
CHILD PARCEL: 02-01-006-156-046, -047

STARTING POINT: PART OF S/L 287 IN STANG'S 2ND SUB.(VOL.4 PG.18) AND S/L 23 IN FRANK ZINK'S ADD.(VOL.8 PG.31)

12-02473-U



23RD ST.



UNCOMBINATION

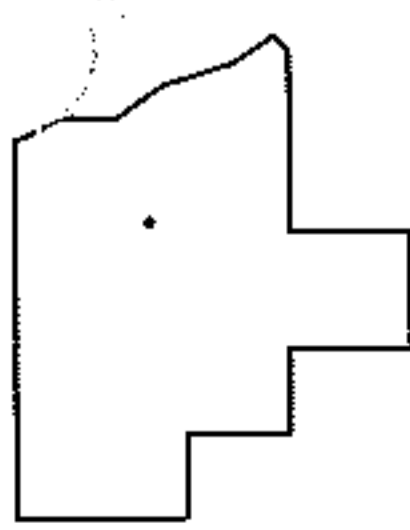
~~02-01-006-156-043~~

~~50 X 139.79~~

02-01-006-156-046
50 X 82.76

02-01-006-156-047
50 X 57.03

CORRECTING 2 LEGALS, 1 PARCEL NO.



SPLITS/DEEDS PROCESSED

LORAIN COUNTY TAX MAP DEPARTMENT
226 MIDDLE AVE. ELYRIA, OHIO

SURVEYED BY: N/A

CLOSURE: N/A

MAP PAGE(S): 2-01-006-E

APPROVED BY: RRM DATE: 3-23-12

SCALE: 1"= 50' PRIOR INST.: DV 1315/315