

PARENT PARCEL: 09-00-087-101-049

CHILD PARCEL: XX-XX-XXX-XXX-XXX

STARTING POINT: I.P. FD., INT. OF THE SOUTH R.O.W. OF EAST LORAIN ST. & EAST LINE OF S/L 9

12-02471-C

FR. & DEPTH CORR.

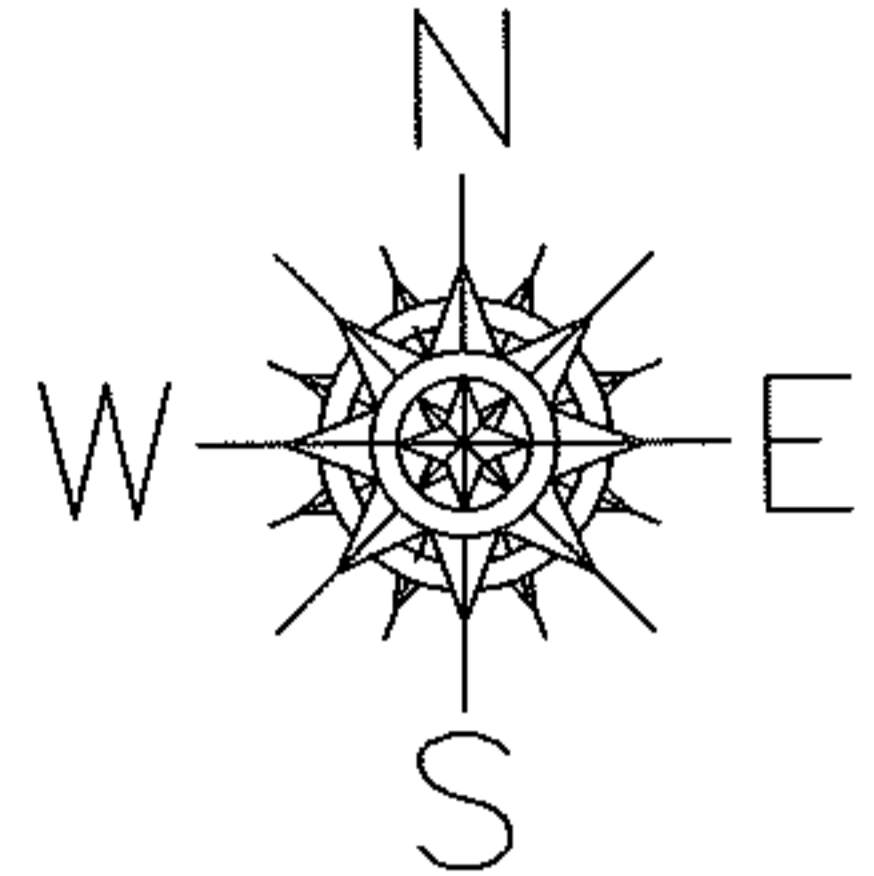
09-00-087-101-049

~~251.74 X 462~~

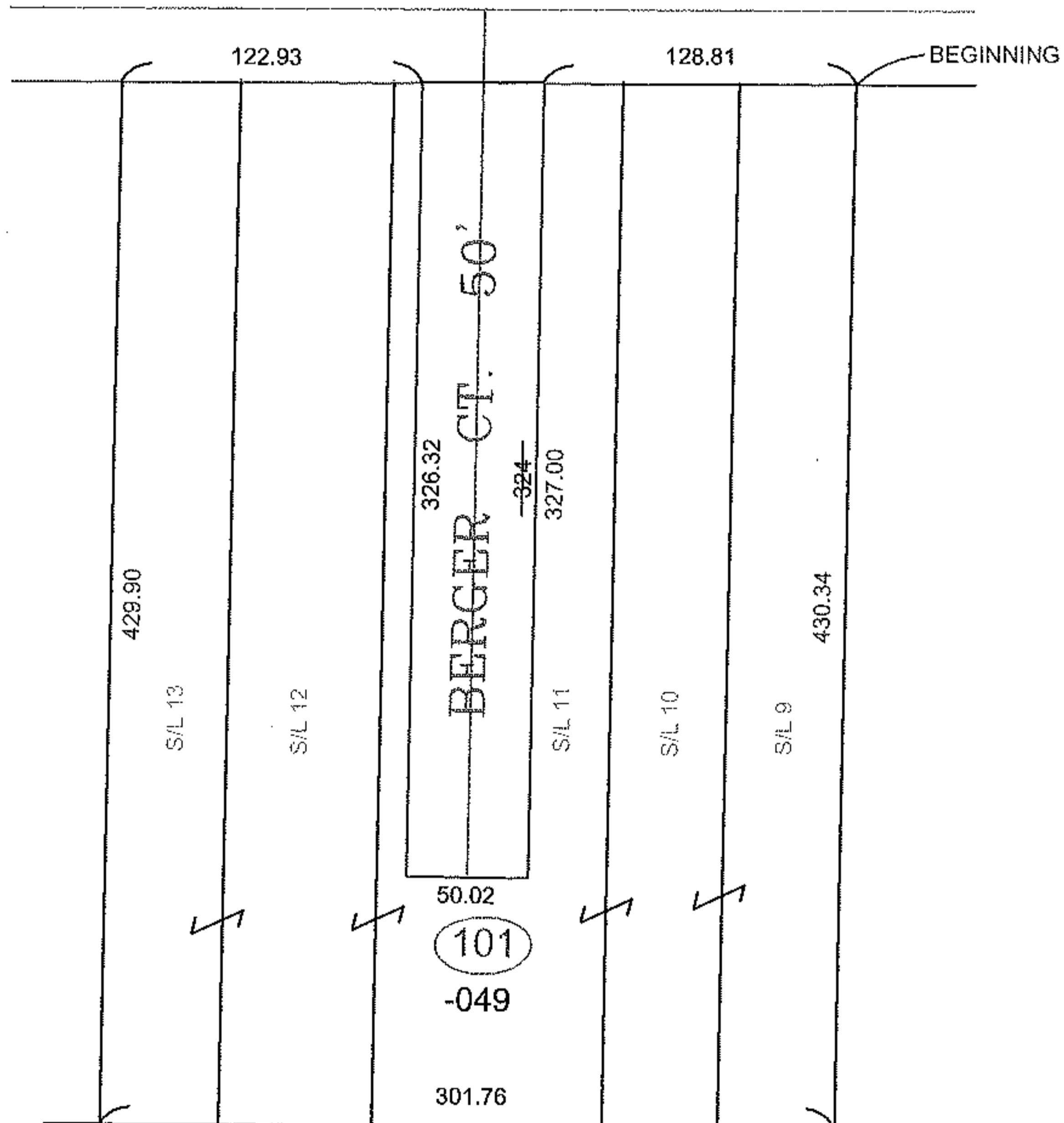
251.74 X 430.34

CORR. PER SURV.

C. DEMPSEY



EAST LORAIN ST. (S.R. 10) 60'



SPLITS/DEEDS PROCESSED

LORAIN COUNTY TAX MAP DEPARTMENT
226 MIDDLE AVE. ELYRIA, OHIO

SURVEYED BY: CHRISTOPHER J. DEMPSEY

CLOSURE: 0.01 : 10,000

MAP PAGE(S): 9-00-087-A

APPROVED BY: TJS DATE: 3/27/12

SCALE: 1"= 100 PRIOR INST.: DV 868/557