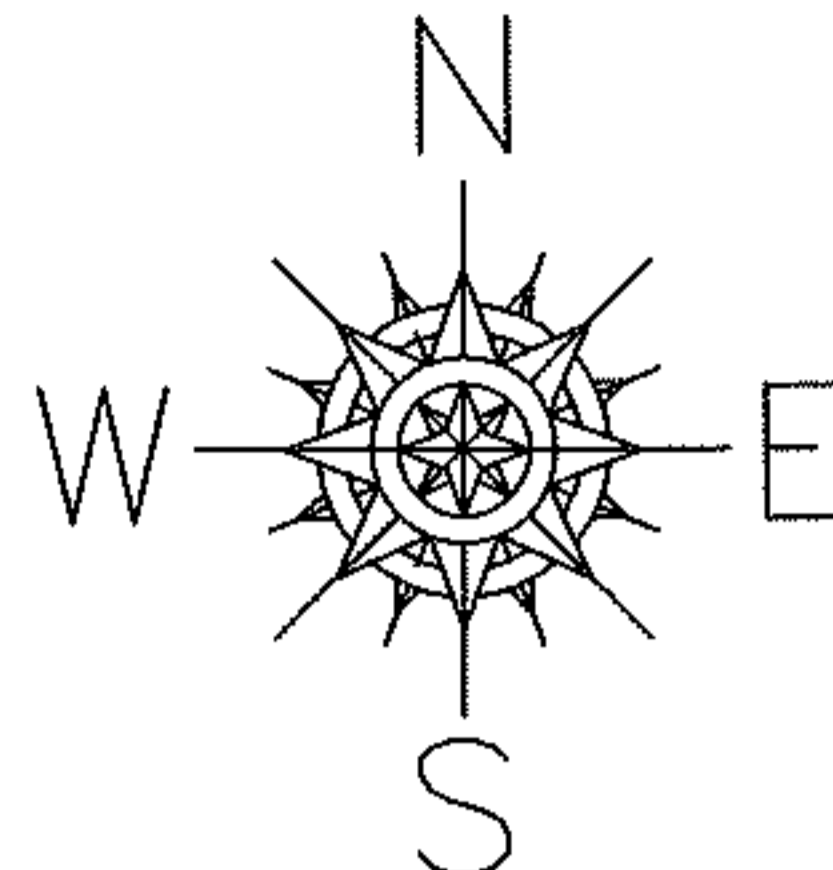


PARENT PARCEL: 09-00-086-111-019

CHILD PARCEL: XX-XX-XXX-XXX-XXX

STARTING POINT: I.P. SET, INT. OF THE SOUTH R.O.W. OF GROVELAND ST. &
THE WEST R.O.W. OF SPRING ST.

12-02469-C



FR. & DEPTH CORR.

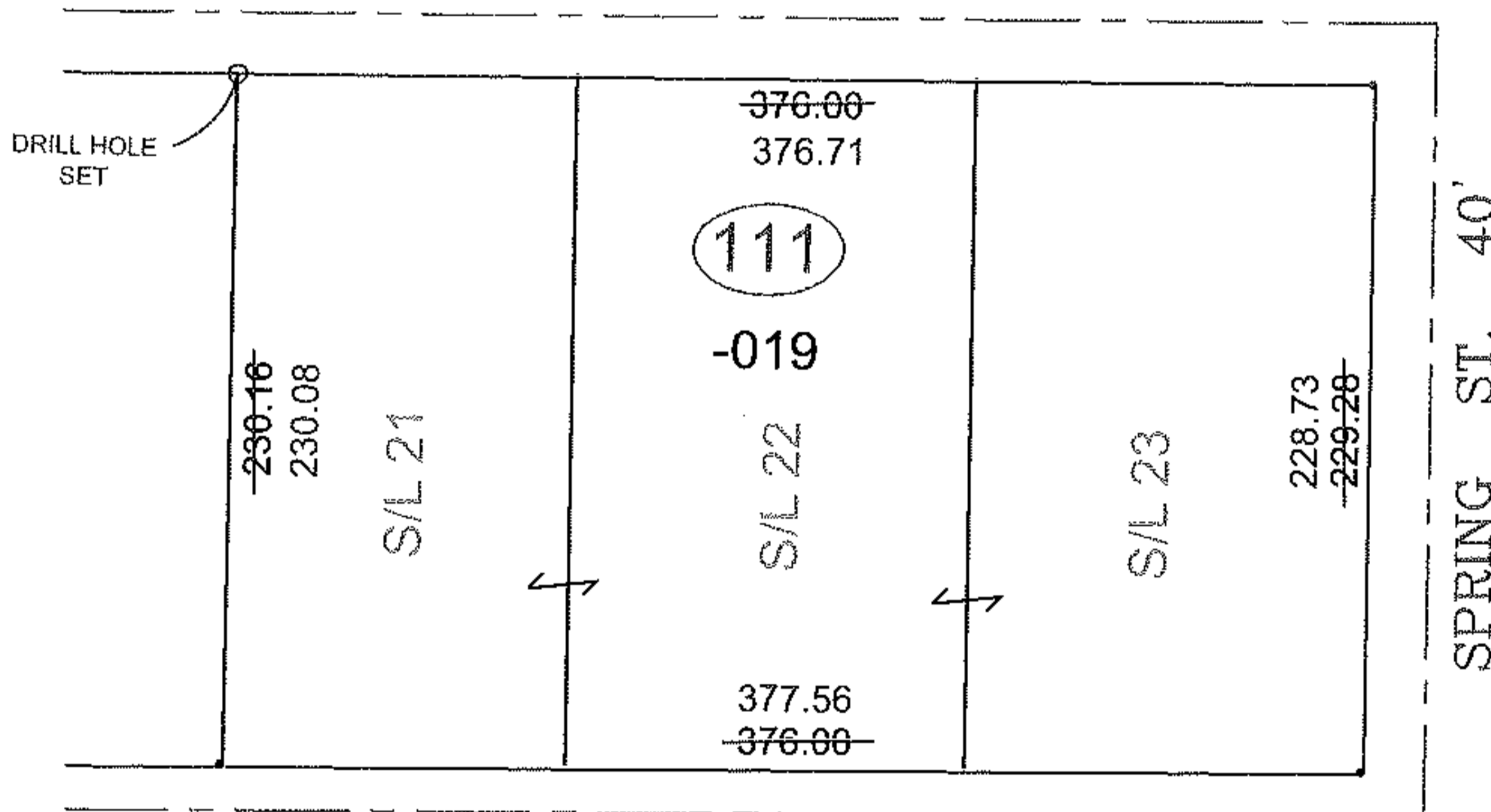
09-00-086-111-019

~~376.71 X 229.28~~

376.71 X 228.73

CORR. PER SURV.
C. DEMPSEY

GROVELAND ST. 40'



FRANKFORT ST. 30'

SPLITS/DEEDS PROCESSED

LORAIN COUNTY TAX MAP DEPARTMENT
226 MIDDLE AVE. ELYRIA, OHIO

SURVEYED BY: CHRISTOPHER J. DEMPSEY

CLOSURE: 0.01 : 10,000

MAP PAGE(S): 09-00-086-B

APPROVED BY: TJS DATE: 3/27/12

SCALE: 1"= 100 PRIOR INST.: DV 865/174