

PARENT PARCEL: 09-00-096-102-017

CHILD PARCEL: XX-XX-XXX-XXX-XXX

STARTING POINT: I.P. SET, INT. OF NORTH R.O.W. OF EDISON ST. & EAST R.O.W. OF MAIN ST.

12-02467-C

FRONTAGE & DEPTH CORR.

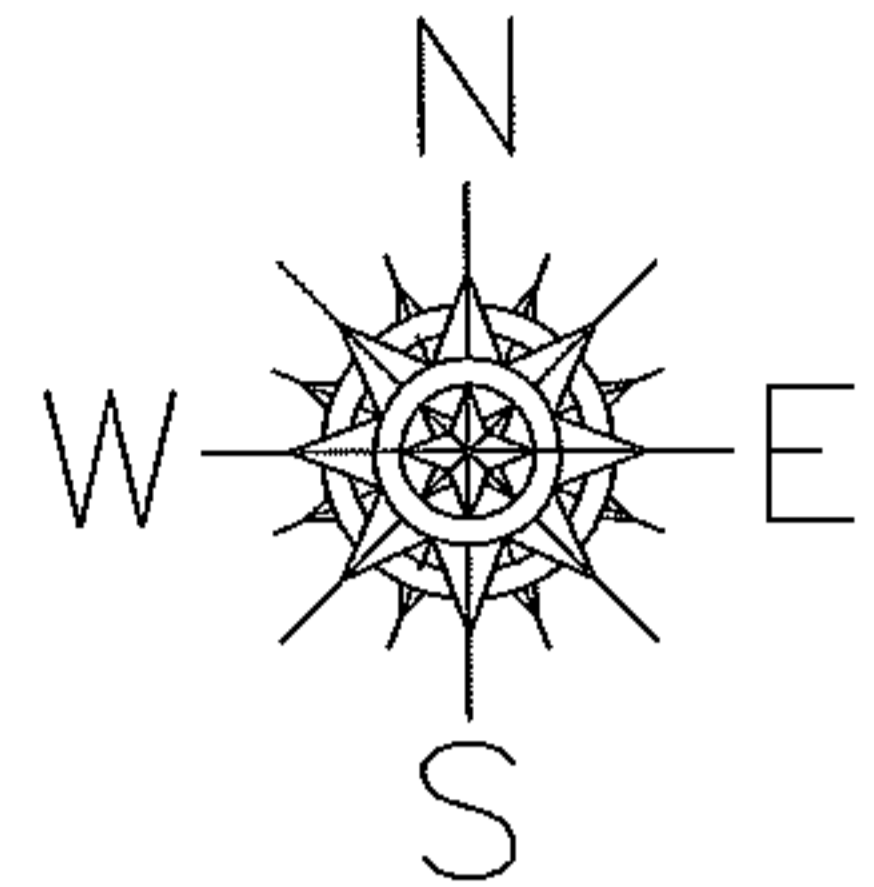
09-00-096-102-017

~~115.50 X 132~~

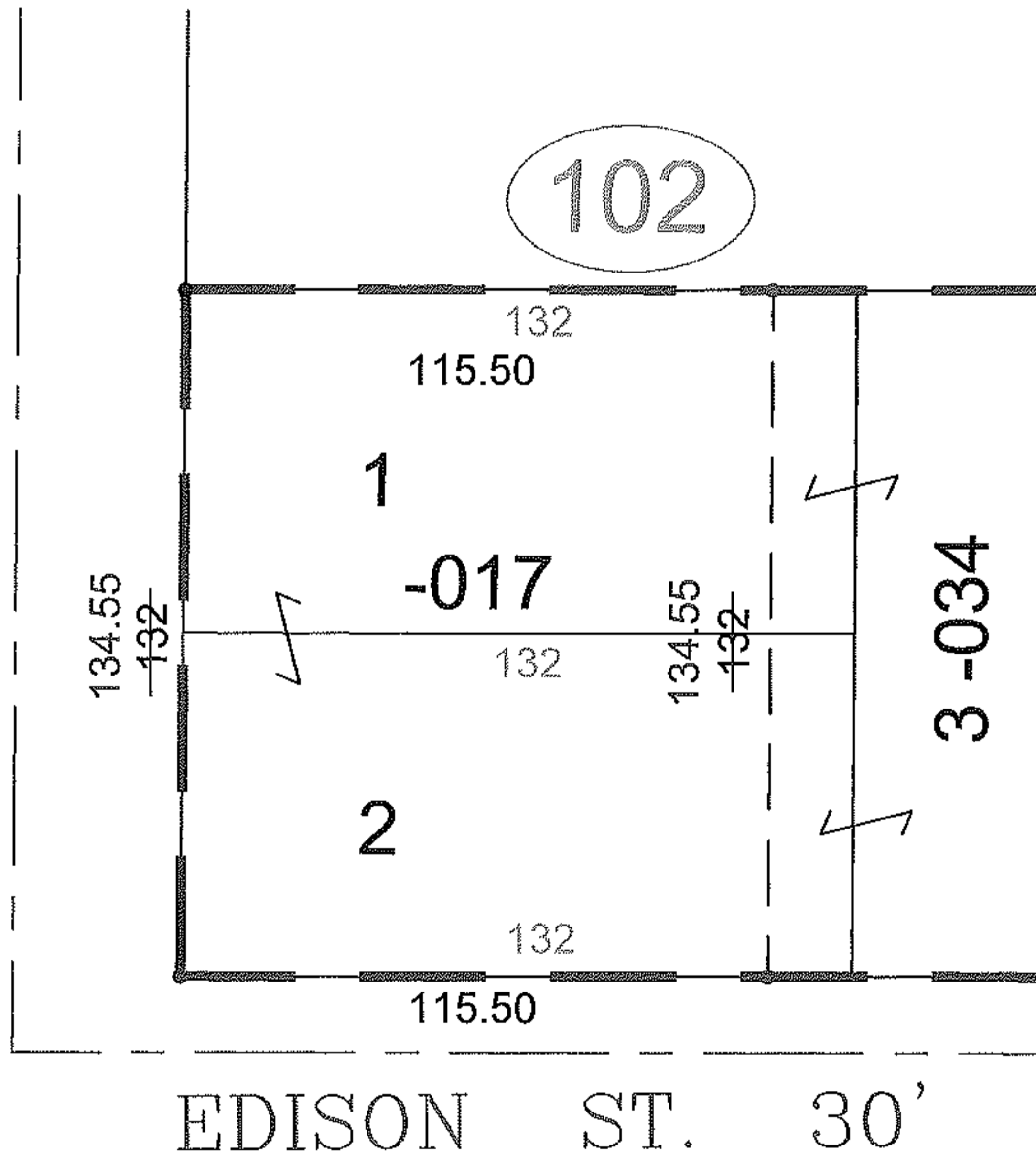
115.50 X 134.55

CORR. PER SURV.

C. DEMPSEY



MAIN ST. (S.R. 58) 66'



SPLITS/DEEDS PROCESSED

LORAIN COUNTY TAX MAP DEPARTMENT
226 MIDDLE AVE. ELYRIA, OHIO

SURVEYED BY: CHRISTOPHER J. DEMPSEY

CLOSURE: 0.00 :10,000

MAP PAGE(S): 9-00-096-A

APPROVED BY: TJS DATE: 3/23/12

SCALE: 1" = 50' PRIOR INST.: DV 867/407