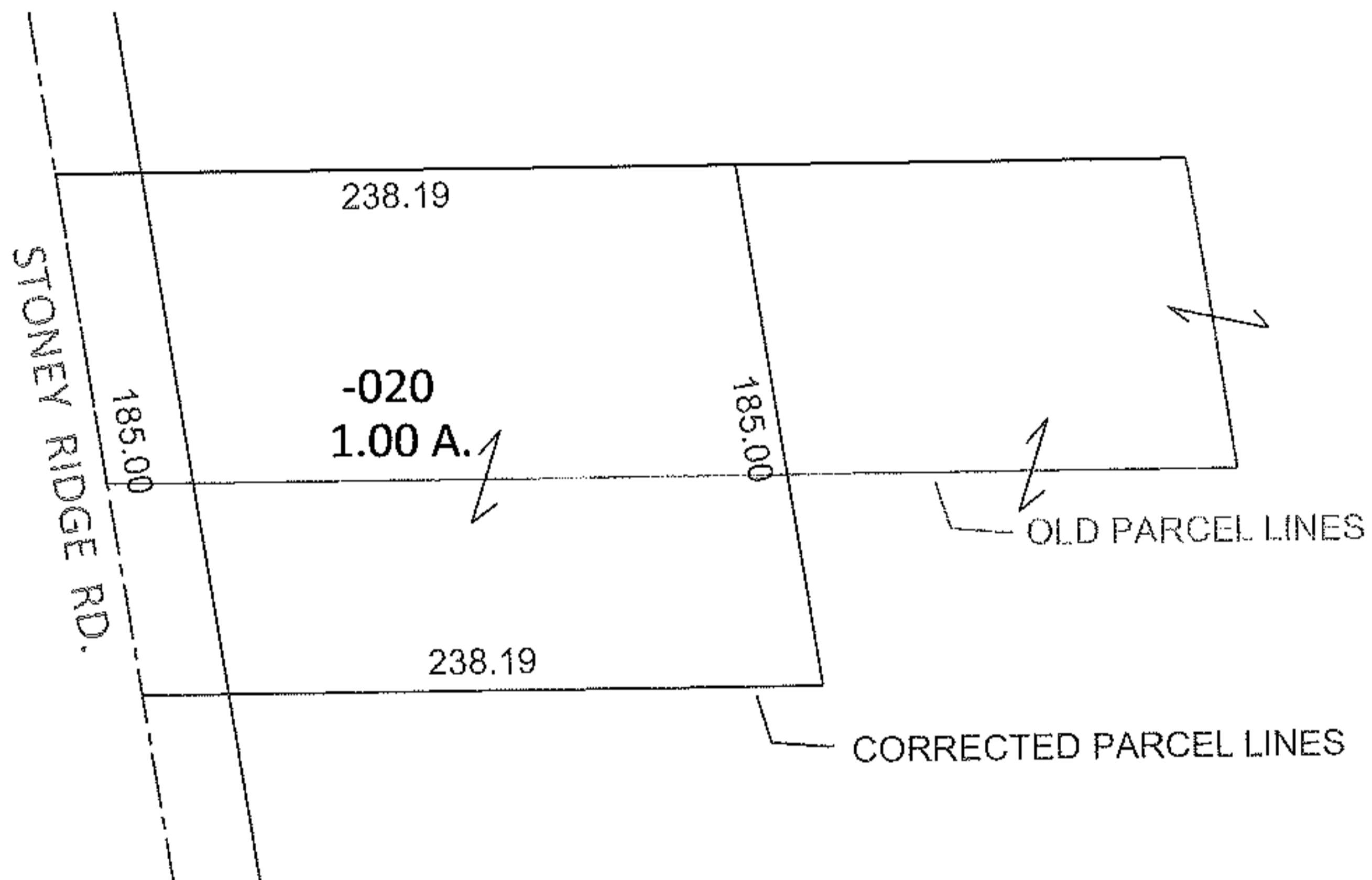
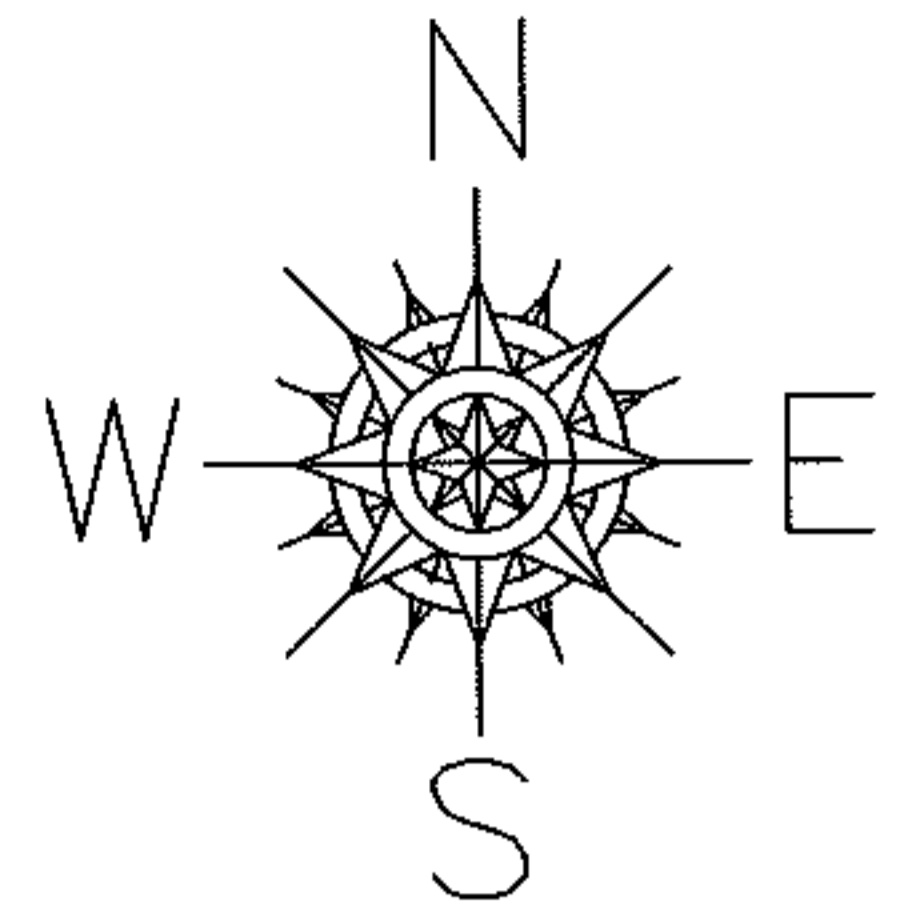


PARENT PARCEL: 07-00-031-000-020

CHILD PARCEL: _____

STARTING POINT: SOUTHWEST CORNER OF JOHN FLOYD & BARBARA RUNYON (DV 975/427)

12-02466-C



MAP CORRECTION ONLY

07-00-031-000-020

1.00 A.

PER SURV. J.R. FOOR

CORRECTIVE DEED FILED DV 1165/199

SPLITS/DEEDS PROCESSED

LORAIN COUNTY TAX MAP DEPARTMENT
226 MIDDLE AVE. ELYRIA, OHIO

SURVEYED BY: J.R. FOOR

CLOSURE: .00:10,000

MAP PAGE(S): 7-B

APPROVED BY: RRM DATE: 3-22-12

SCALE: 1"= 100 PRIOR INST.: DV XXXX/XXX

