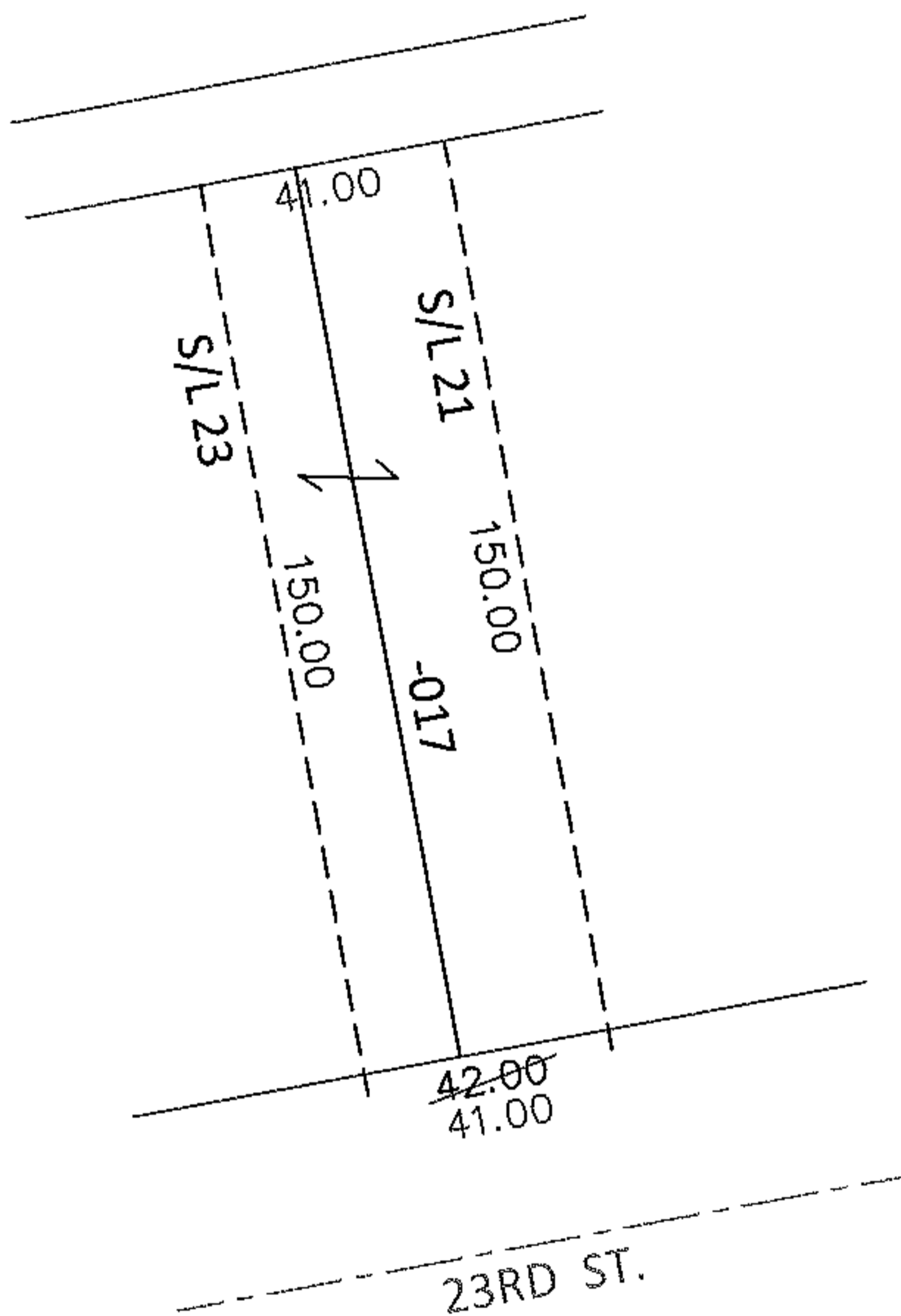
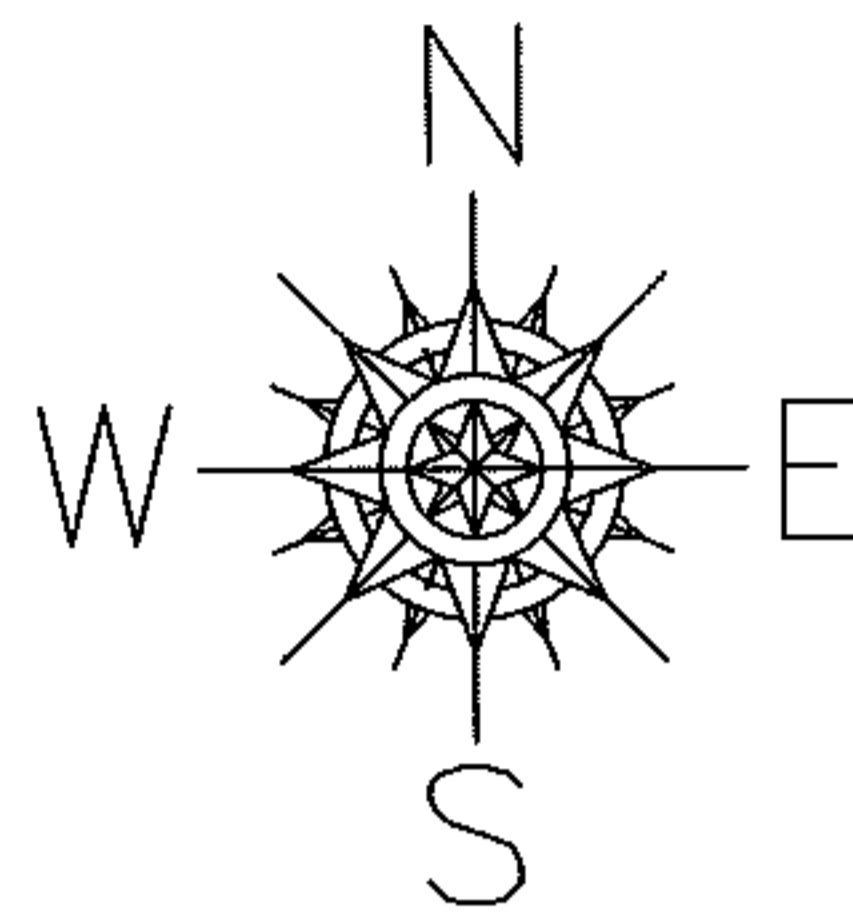


PARENT PARCEL: 02-01-003-173-017

CHILD PARCEL: _____

12-02463-C

STARTING POINT: NORTH LINE OF CHARLES ST. AT A POINT 25 FT EAST OF THE WEST LINE OF S/L 21 IN HOGANS 3RD ADD.(VOL.3 PG.31)



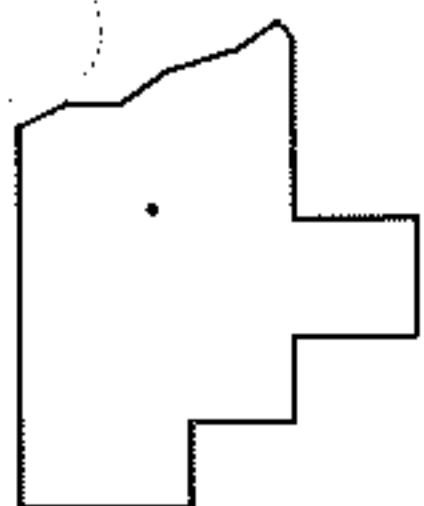
FRONTAGE CORRECTION

02-01-003-173-017

41

~~42~~ X 150

PER PRIOR DEEDS



SPLITS/DEEDS PROCESSED

LORAIN COUNTY TAX MAP DEPARTMENT
226 MIDDLE AVE. ELYRIA, OHIO

SURVEYED BY: N/A

CLOSURE: N/A

MAP PAGE(S): 2-01-003-H

APPROVED BY: RRM DATE: 11-19-12

SCALE: 1"= 50' PRIOR INST.: 20120405354