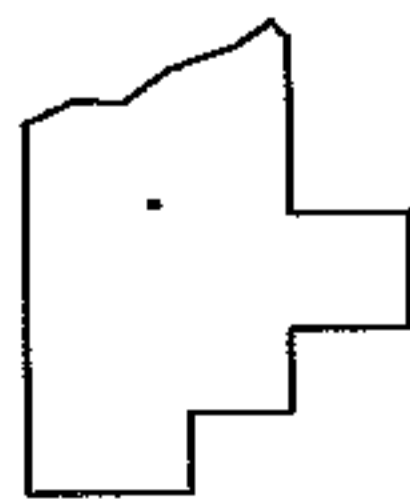
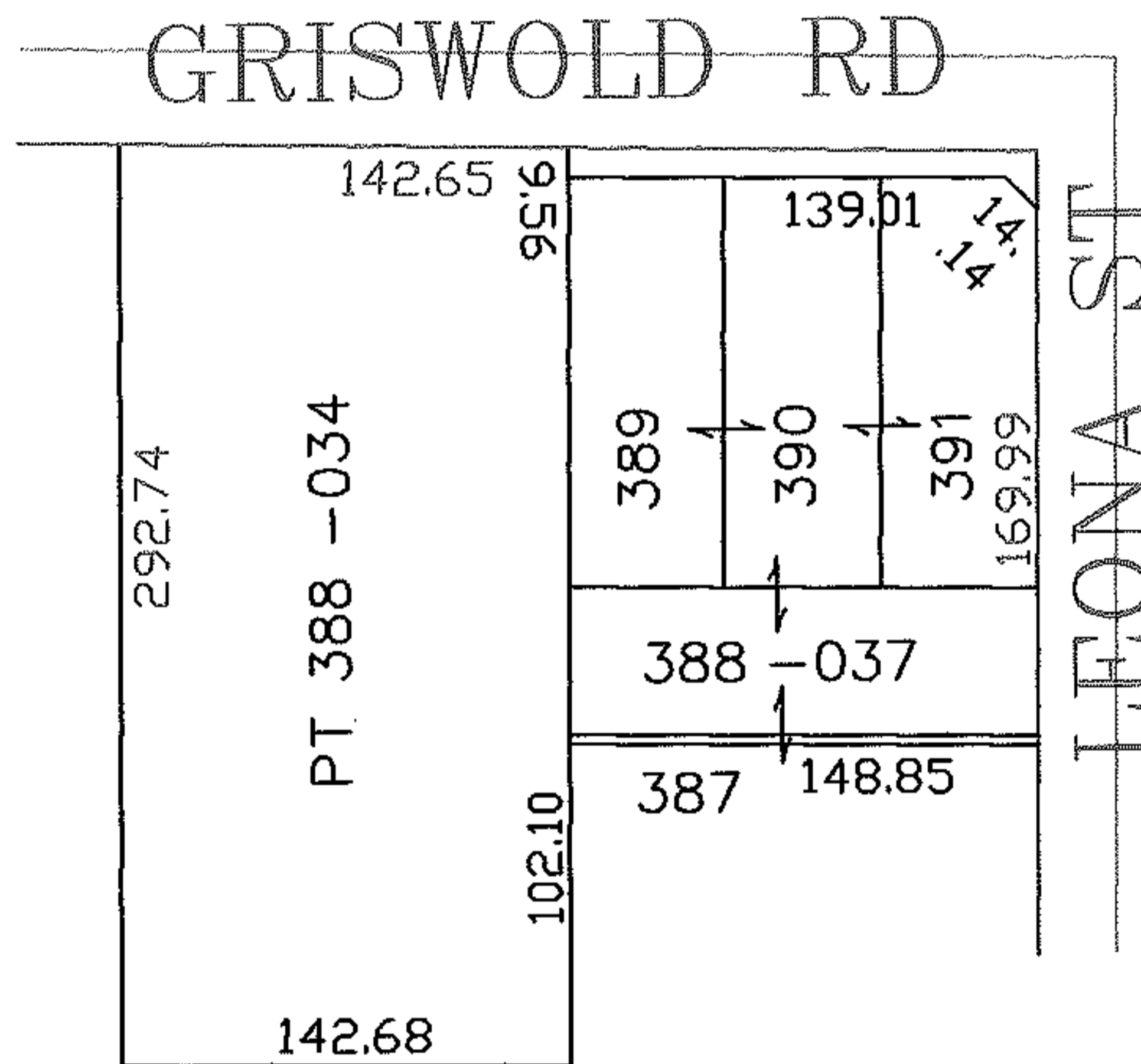
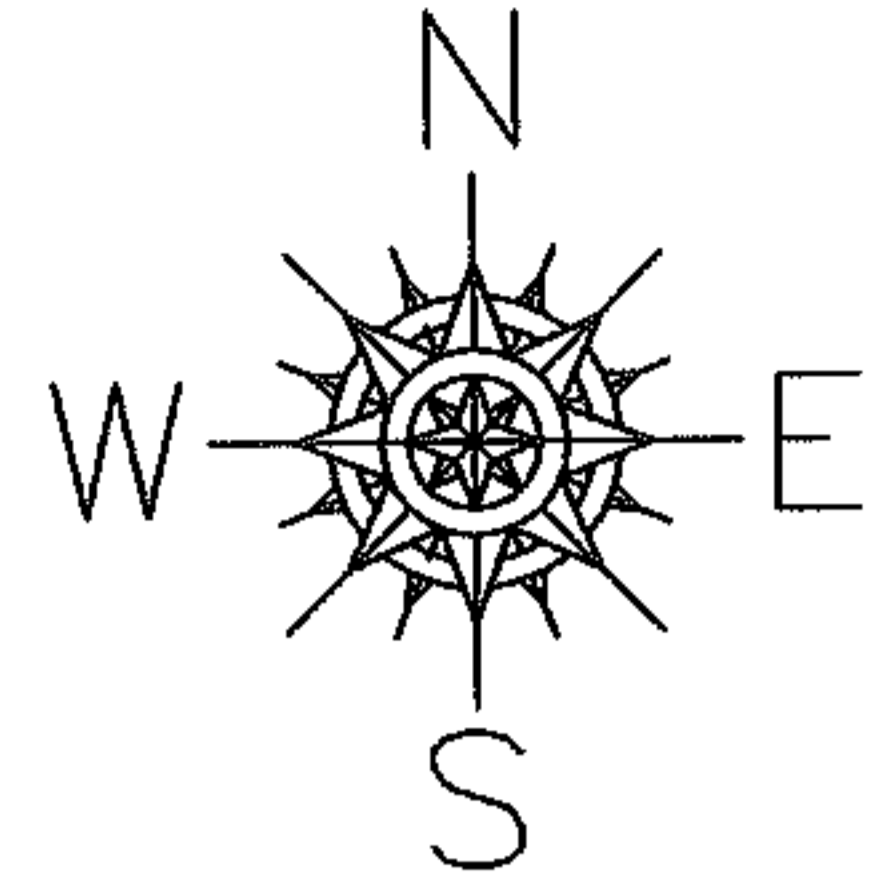


PARENT PARCEL: 06-24-032-102-034, -037

07-02462

CHILD PARCEL: SAME

STARTING POINT: SIDELINE OF GRISWOLD RD & LEONA ST



SPLITS/DEEDS PROCESSED
LORAIN COUNTY TAX MAP DEPARTMENT
226 MIDDLE AVE. ELYRIA, OHIO

SURVEYED BY: EDWARD VAN HORN
 CLOSURE: 0.00 : 10.000
 MAP PAGE(S): 6-45
 APPROVED BY: JAH DATE: 9-18-07
 SCALE: 1" = 100 PRIOR INSTRUMENT: 2007022211