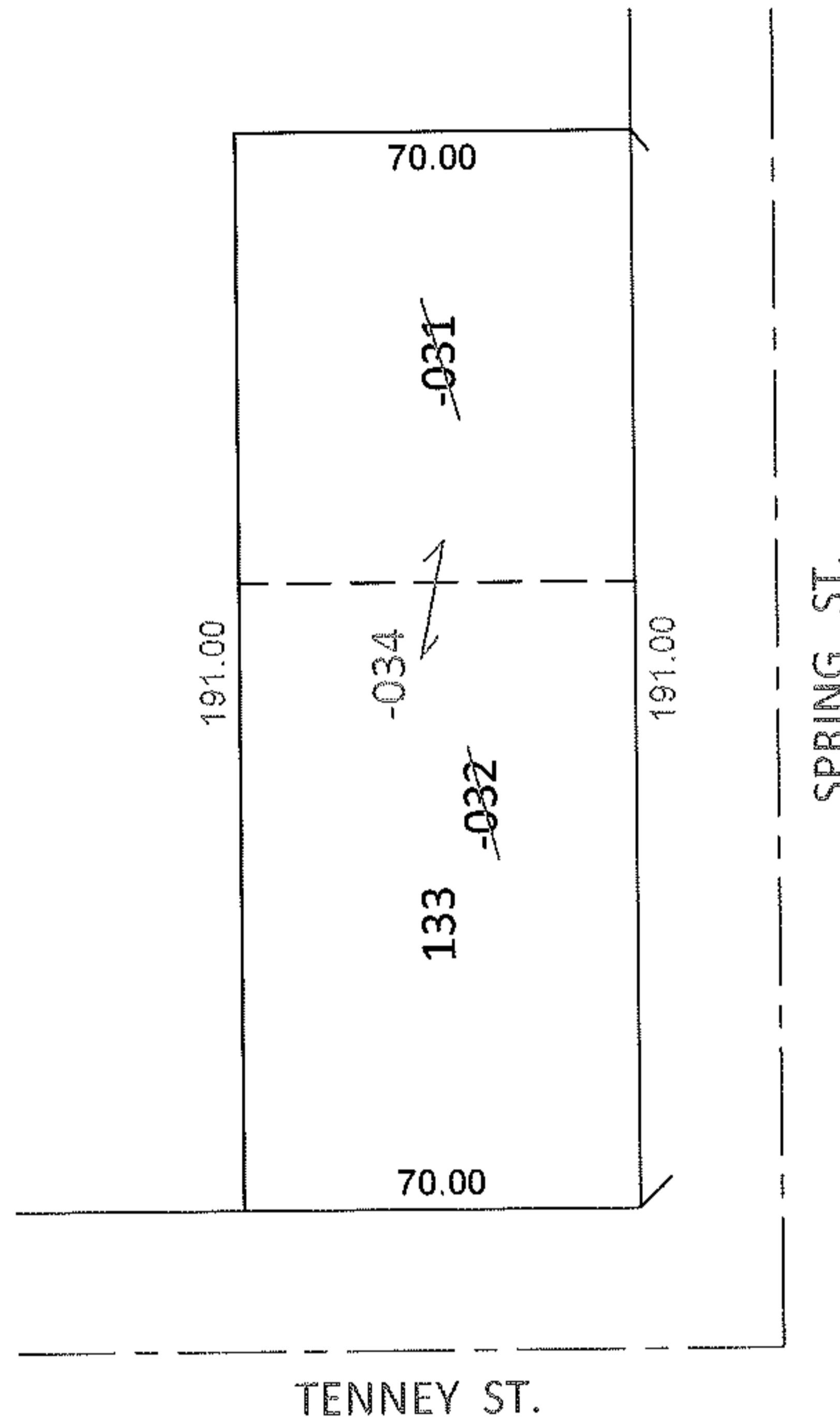
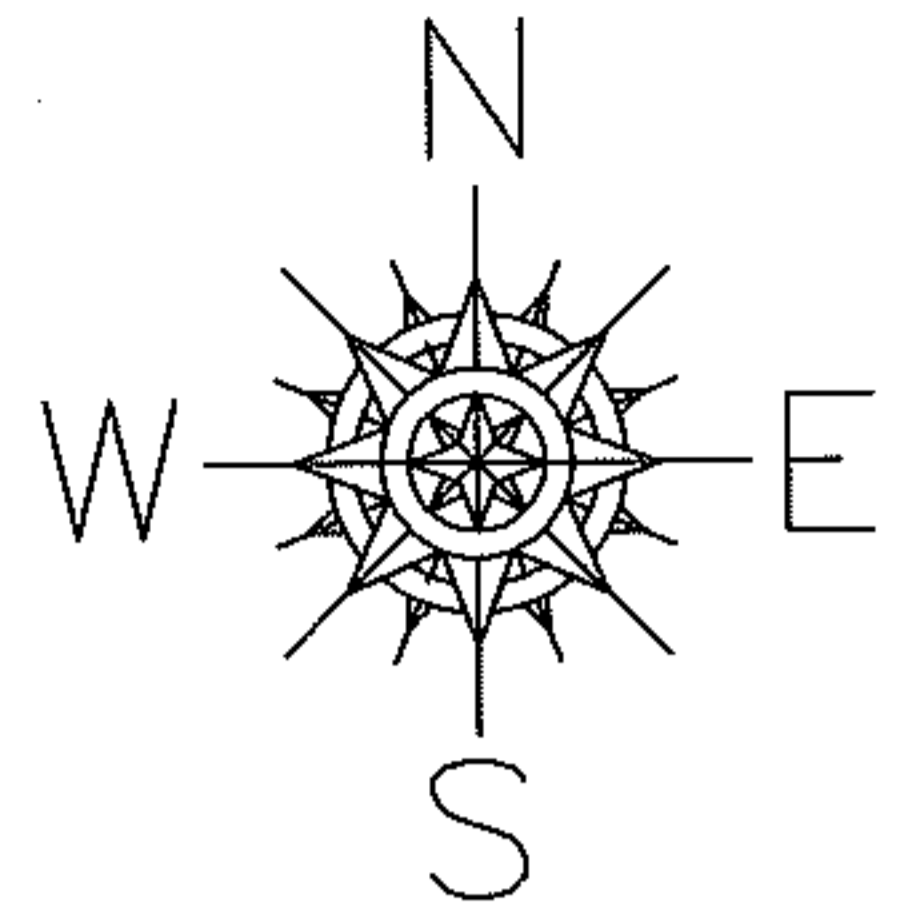


PARENT PARCEL: 05-00-024-103-031, -032

CHILD PARCEL: 05-00-024-103-034

STARTING POINT: S/L 193 IN MORTON C. SEELEY'S ADDITION (VOL.1 PG.37)

12-02460-C



COMBINATION CORRECTION

~~05-00-024-103-031~~ ~~05-00-024-103-032~~

~~80 X 70~~ ~~70 X 111~~

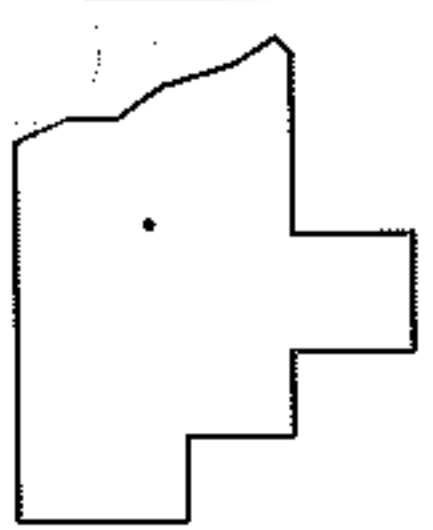
05-00-024-103-034

70 X 191

CORRECTION PER DEED

*20080239760

*20080256881



SPLITS/DEEDS PROCESSED

LORAIN COUNTY TAX MAP DEPARTMENT
226 MIDDLE AVE. ELYRIA, OHIO

SURVEYED BY: N/A

CLOSURE: N/A

MAP PAGE(S): 5-00-024-B

APPROVED BY: RRM DATE: 3-9-12

SCALE: 1" = 50' PRIOR INST.: *SEE ABOVE