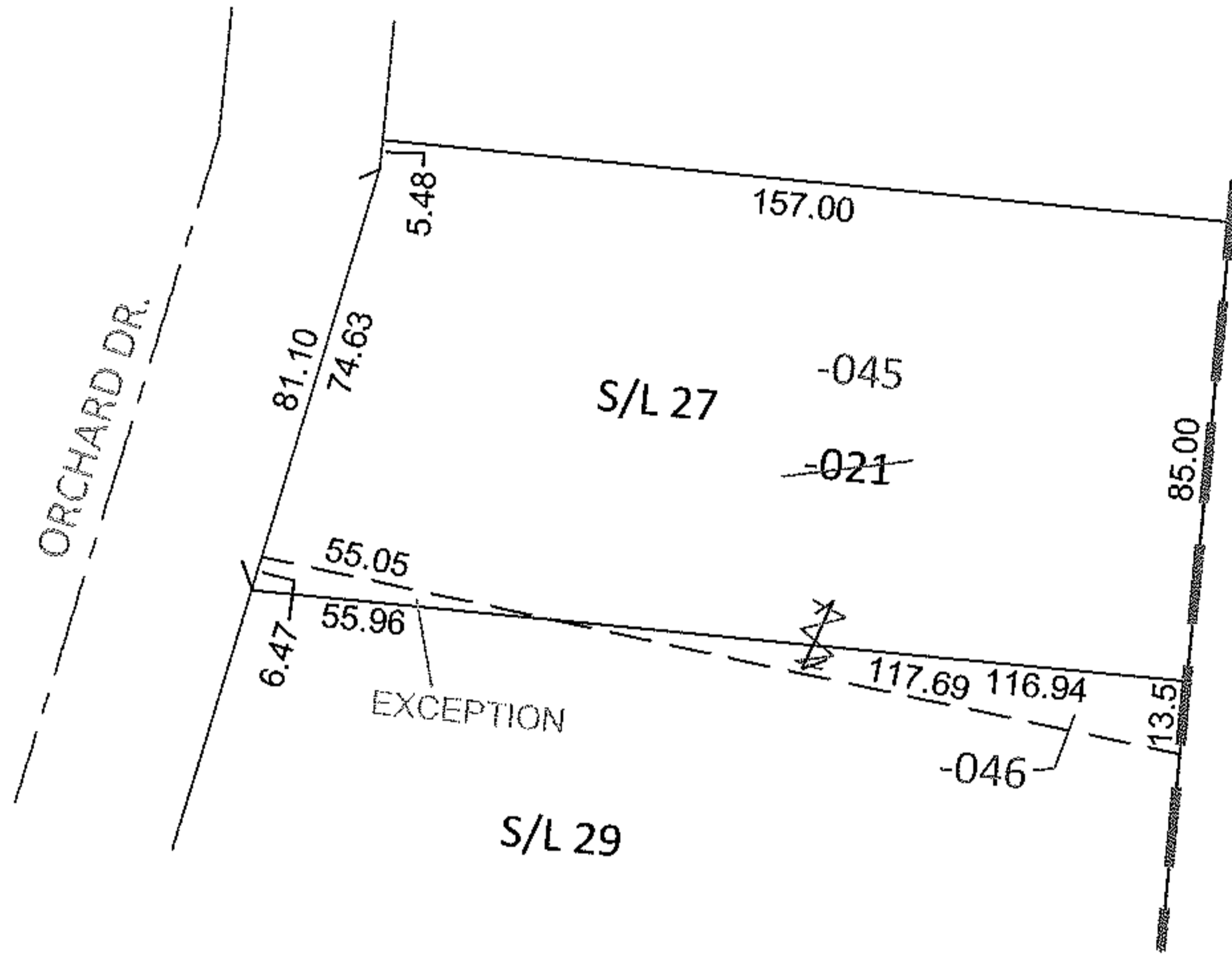
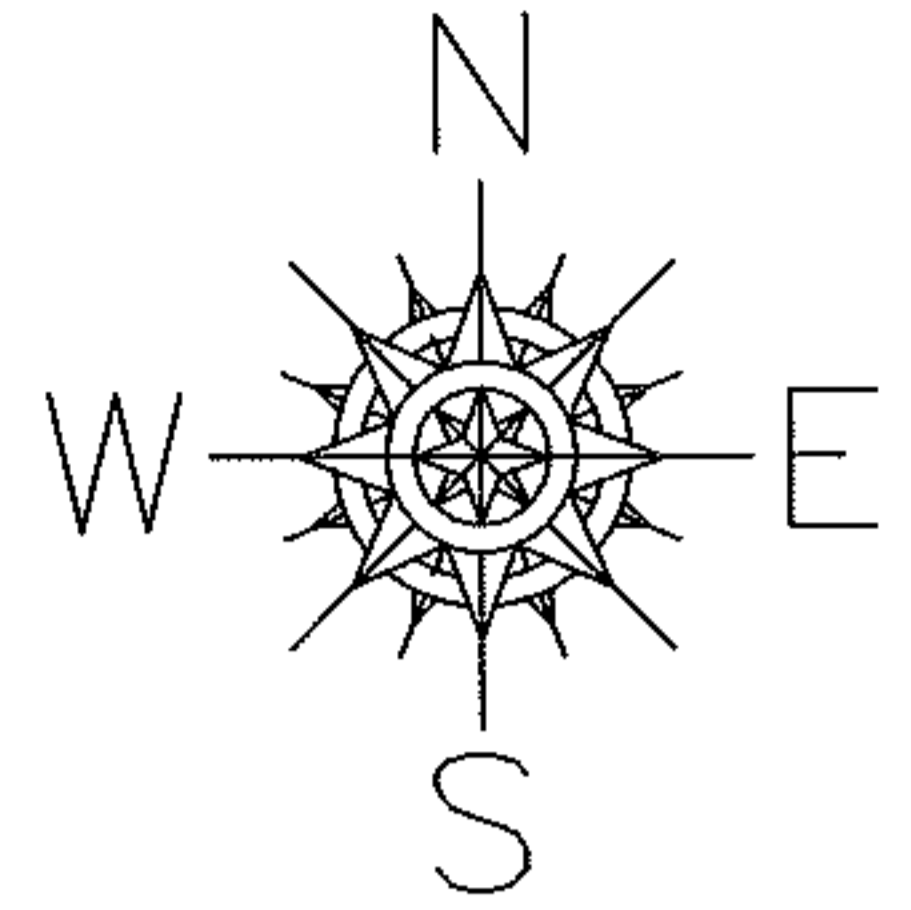


RASTEL

PARENT PARCEL: 05-00-038-107-021
CHILD PARCEL: 05-00-038-107-045, -046
STARTING POINT: COMMON CORNER OF S/L'S 27 & 29 ON THE EAST LINE OF RICE ALLOT.(VOL.21 PG.39)

12-02459-C



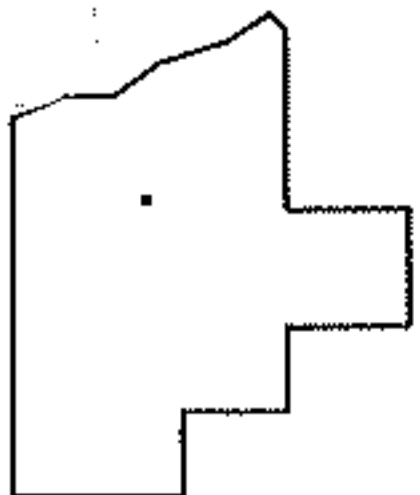
UNCOMBINATION
TO REMOVE UPDATE LEGAL
2 LEGALS, 1 PARCEL NO.

~~05-00-038-107-021~~
~~81.08 X 159~~

05-00-038-107-045
80.11 X 157

05-00-038-107-046
13.5 X 116.94 X 117.69 TR.

PER PRIOR DEEDS



SPLITS/DEEDS PROCESSED

LORAIN COUNTY TAX MAP DEPARTMENT
226 MIDDLE AVE. ELYRIA, OHIO

SURVEYED BY: N/A
CLOSURE: .01:10,000
MAP PAGE(S): 5-00-038-B
APPROVED BY: RRM DATE: 3-8-12
SCALE: 1"= 50' PRIOR INST.: OR 371/351