

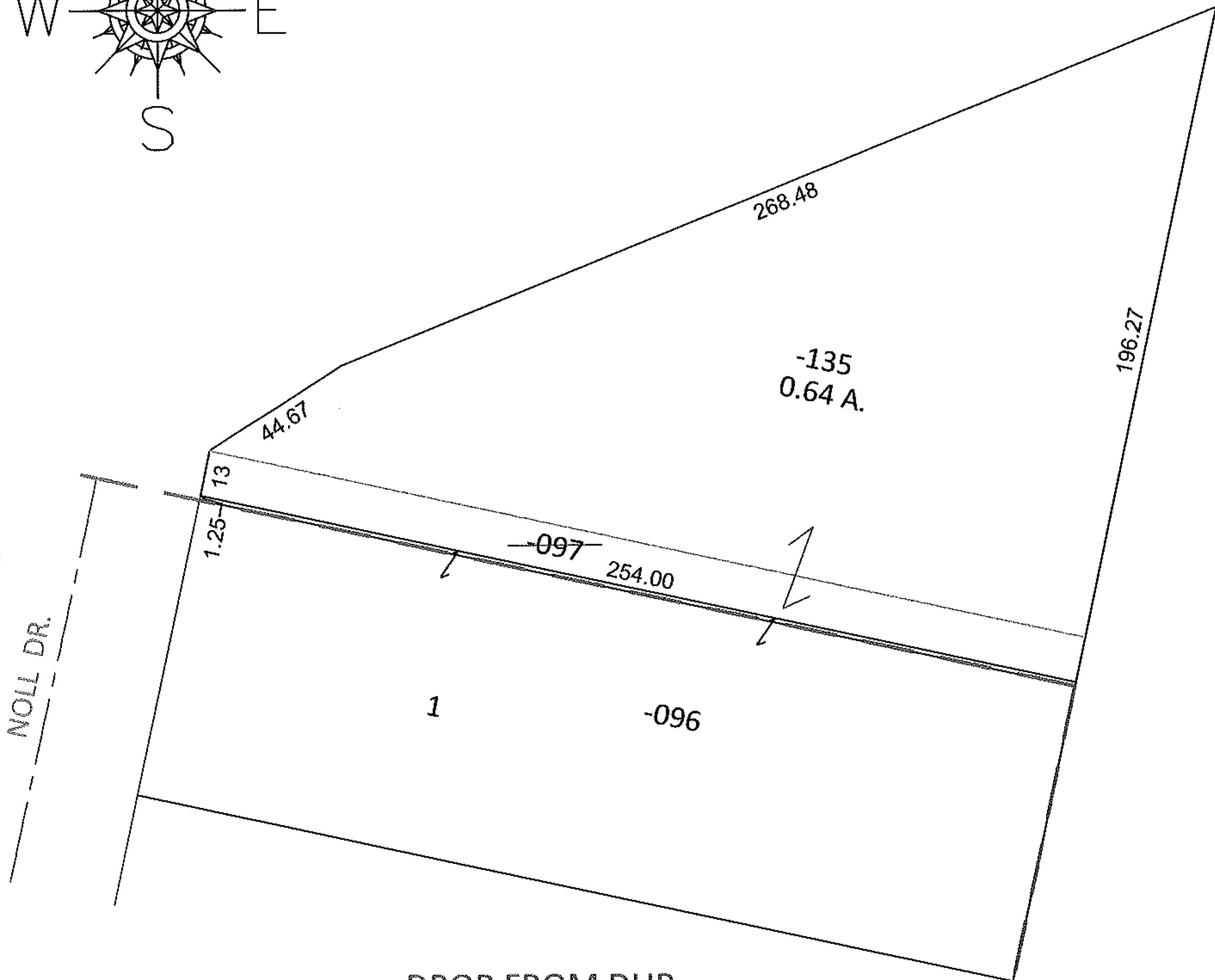
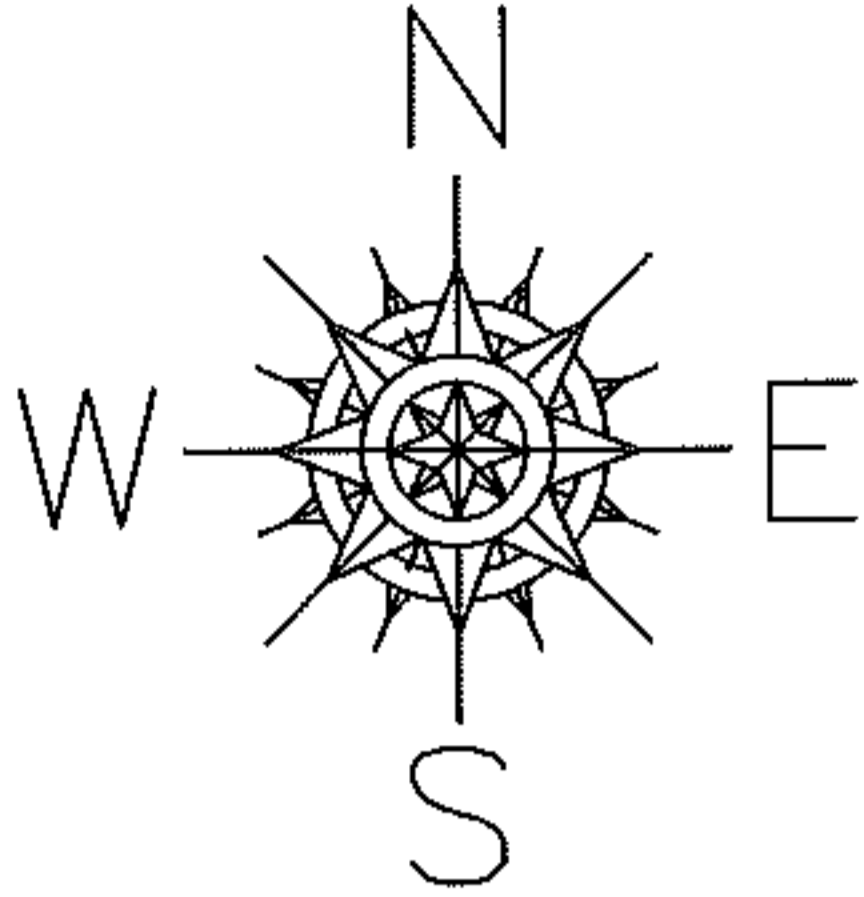
RASTER

PARENT PARCEL: 07-00-028-103-097

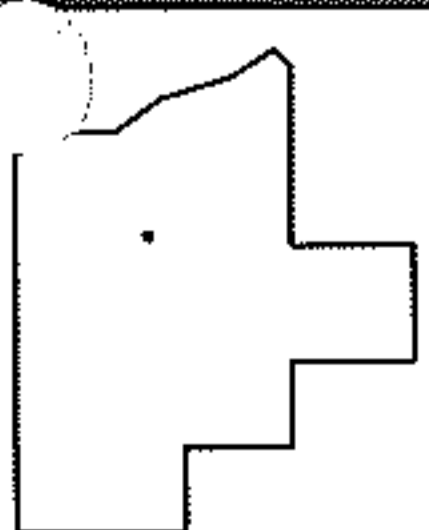
CHILD PARCEL: DROP FROM DUP.

12-02454-C

STARTING POINT:



DROP FROM DUP.  
07-00-028-103-097  
13 X 254  
SHOULD HAVE BEEN COMBINED WITH  
07-00-028-103-135  
PER SPLIT #07-02374



SPLITS/DEEDS PROCESSED

LORAIN COUNTY TAX MAP DEPARTMENT  
226 MIDDLE AVE. ELYRIA, OHIO

SURVEYED BY: DANE A. HAPONER

CLOSURE: .01:10,000

MAP PAGE(S): 7-00-028-D

APPROVED BY: RRM DATE: 3-5-12

SCALE: 1" = 50' PRIOR INST.: 20070204829