

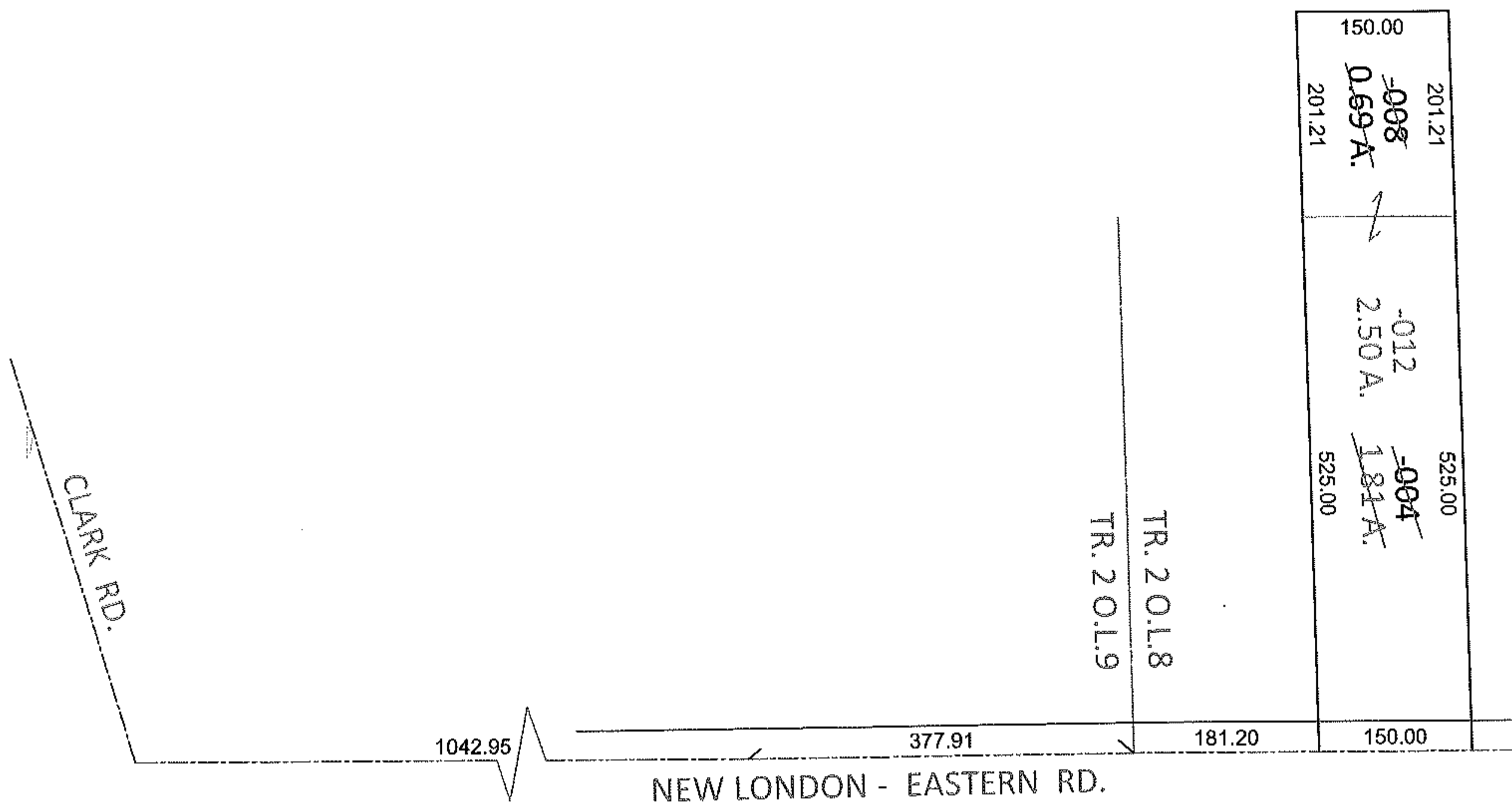
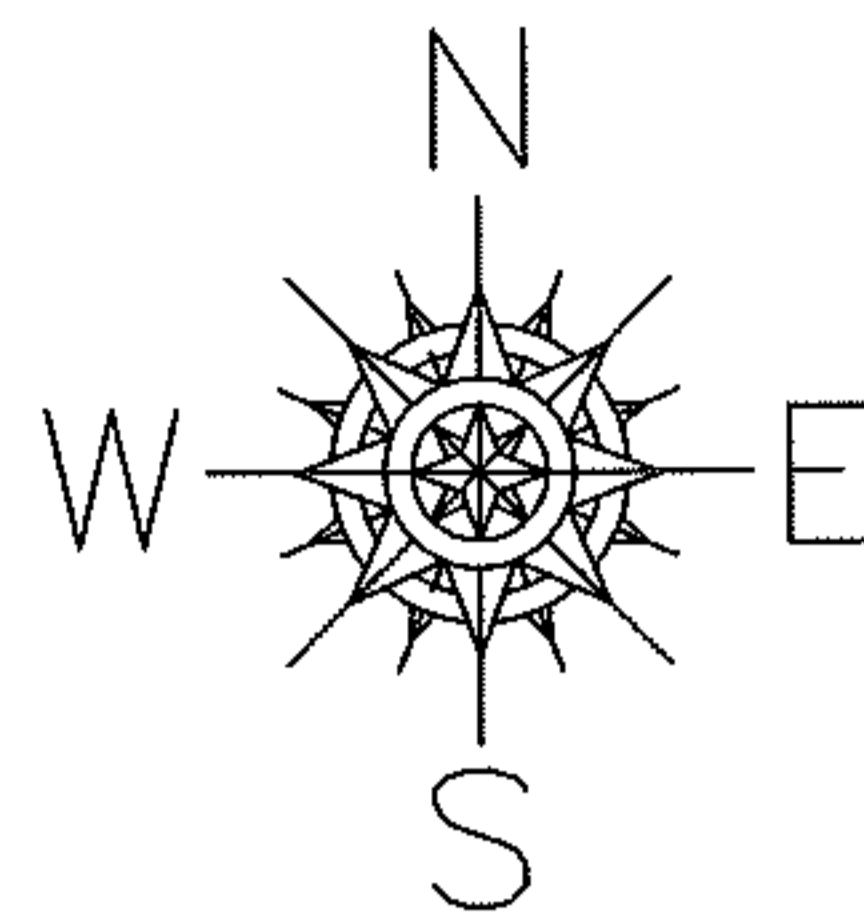
RASTER

PARENT PARCEL: 21-02-008-000-008, -004

CHILD PARCEL: 21-02-008-000-012

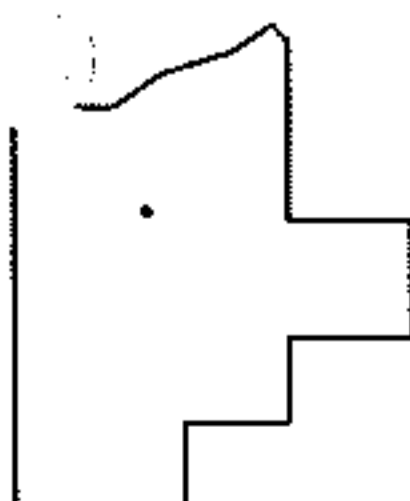
STARTING POINT: INTERSECTION OF C/L OF CLARK RD. AND C/L OF NEW LONDON EASTERN RD.

12-02448-C



COMBINATION CORRECTION

TO REMOVE UPDATE LEGAL  
FOR 2 PARCEL NOS., 1 LEGAL



SPLITS/DEEDS PROCESSED

LORAIN COUNTY TAX MAP DEPARTMENT  
226 MIDDLE AVE. ELYRIA, OHIO

SURVEYED BY: N/A

CLOSURE: .00:10,000

MAP PAGE(S): 21-F

APPROVED BY: RRM DATE: 2-28-12

SCALE: 1"= 200 PRIOR INST.: 20120399606