

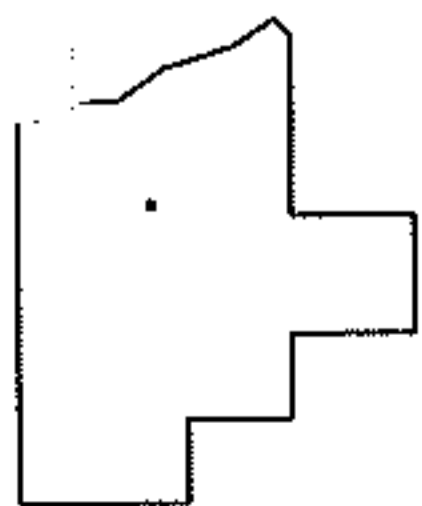
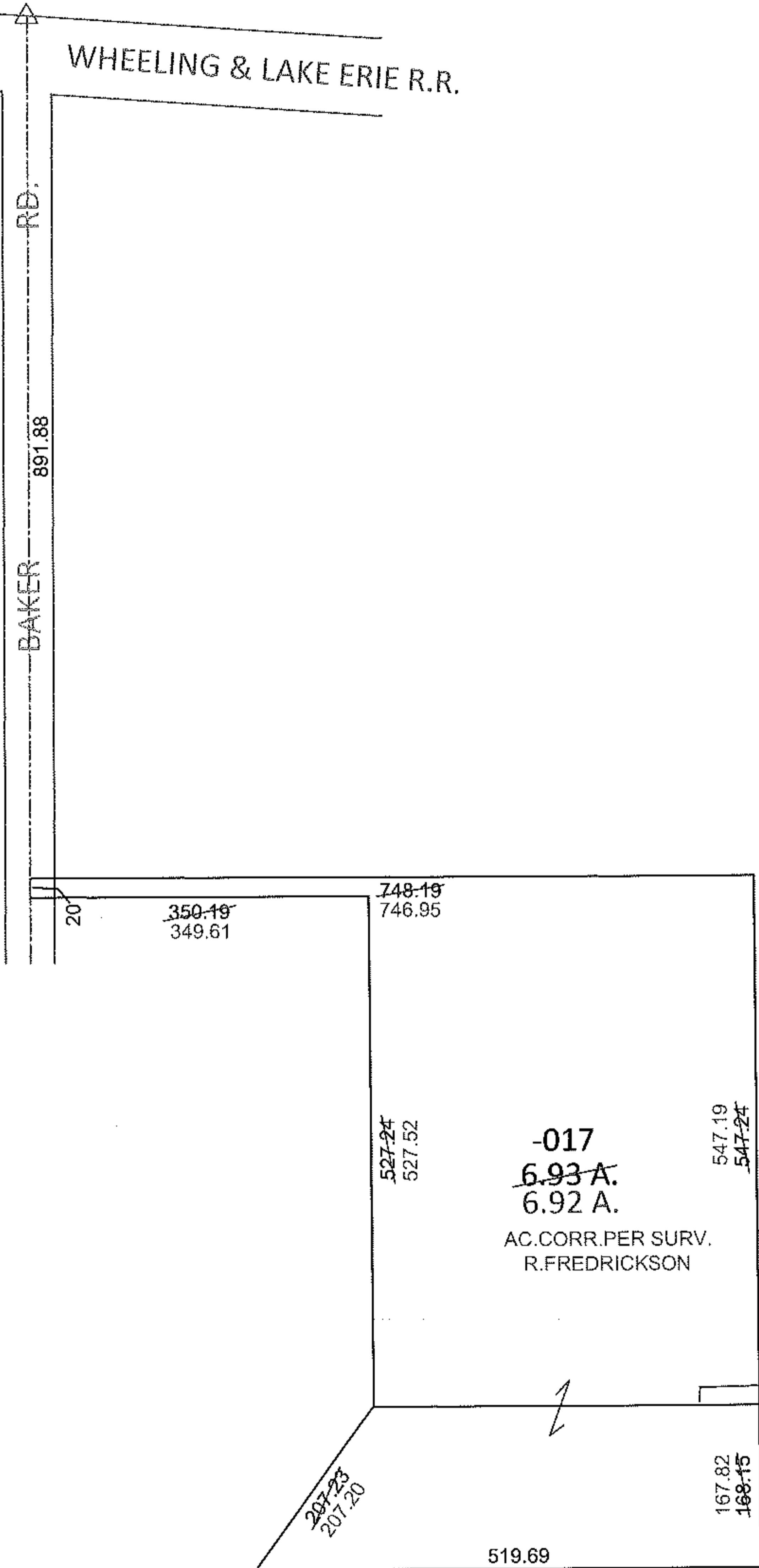
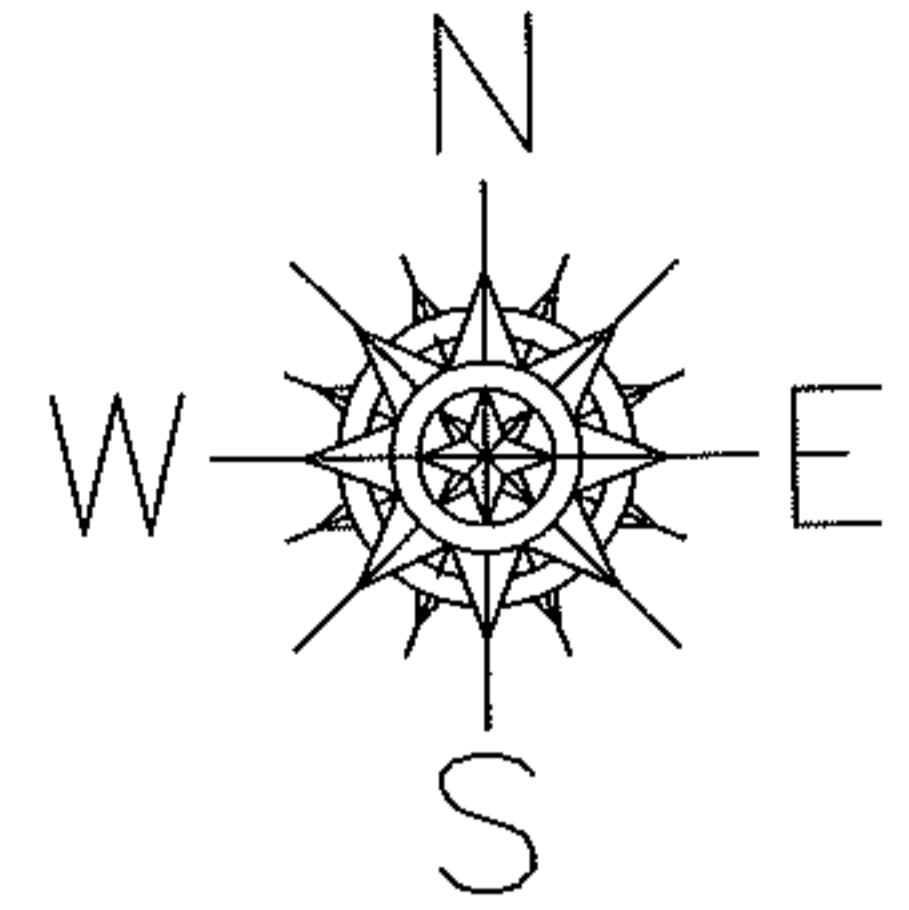
Russell

PARENT PARCEL: 21-02-019-000-017

CHILD PARCEL: _____

12-02447-U

STARTING POINT: AT A R.R.S. AT THE INTERSECTION OF C/L OF BAKER RD. AND NORTH LINE OF WHEELING & LAKE ERIE R.R.



SPLITS/DEEDS PROCESSED

LORAIN COUNTY TAX MAP DEPARTMENT
226 MIDDLE AVE. ELYRIA, OHIO

SURVEYED BY: RICHARD A. FREDRICKSON

CLOSURE: .01:10,000

MAP PAGE(S): 21-E

APPROVED BY: RRM DATE: 3-15-12

SCALE: 1"=200 PRIOR INST.: 20080272493