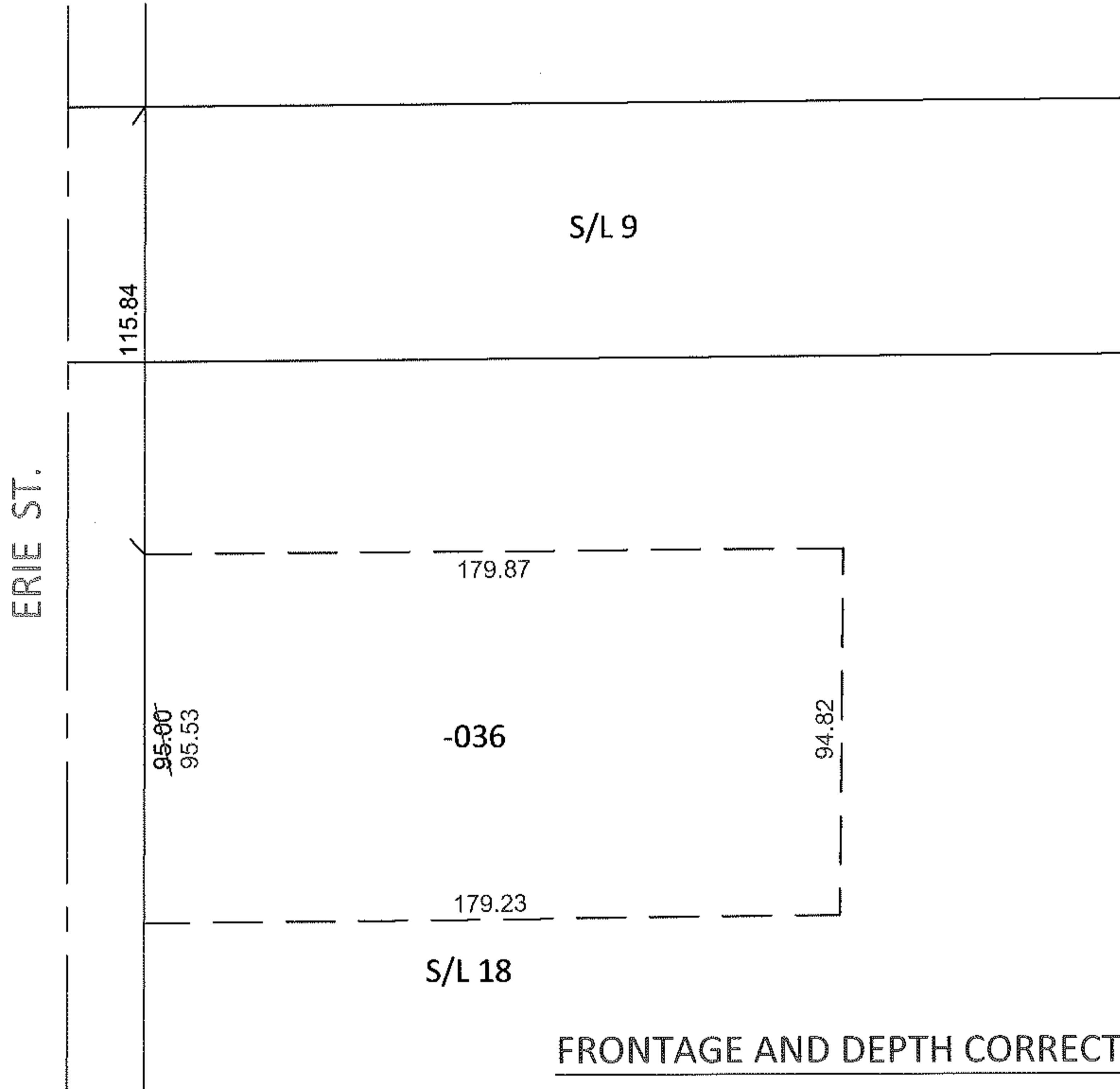
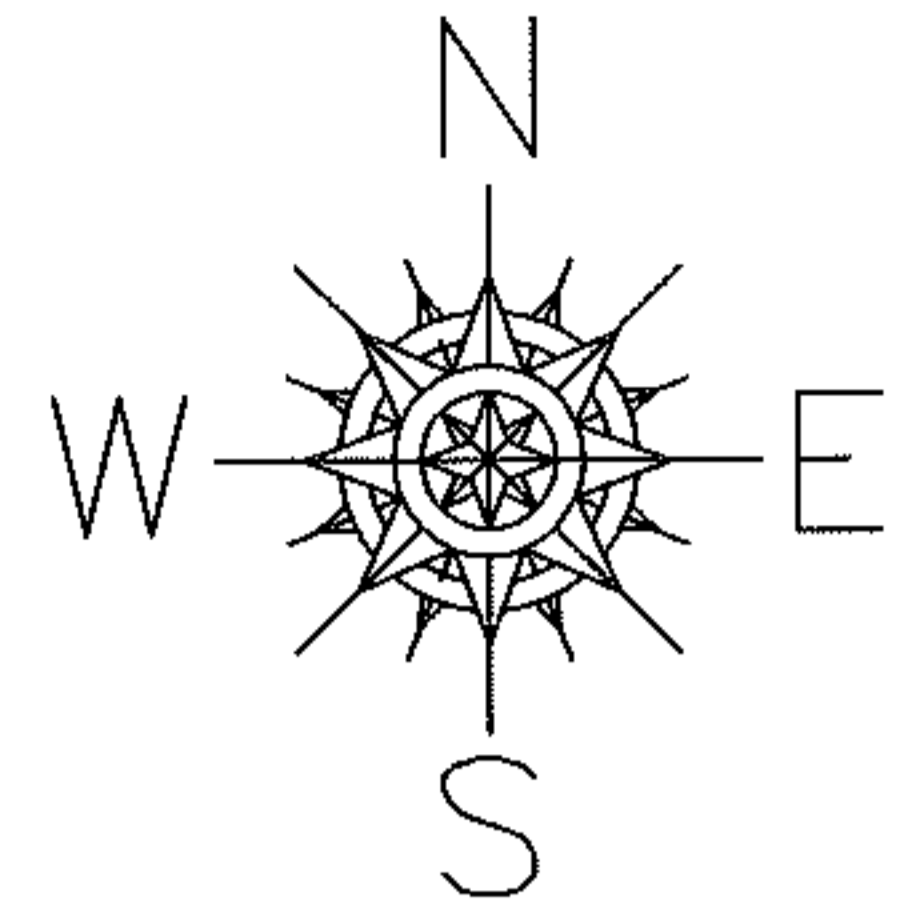


PARENT PARCEL: 05-00-012-101-036

CHILD PARCEL: _____

STARTING POINT: INTERSECTION OF NORTH LINE OF S/L 9 AND EAST R.O.W. LINE OF ERIE ST.

12-02442-C



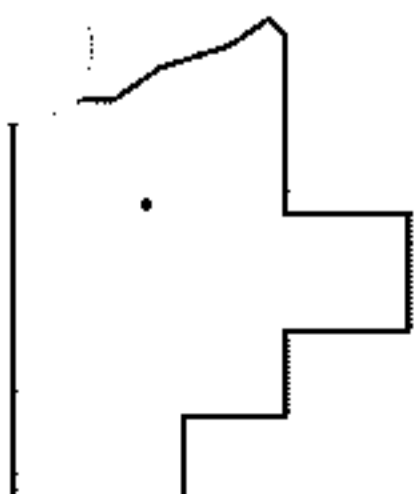
FRONTAGE AND DEPTH CORRECTION

05-00-012-101-036

95.53 X 179.87

~~95 X 199~~

PER SURV. D.HAYWOOD



SPLITS/DEEDS PROCESSED

LORAIN COUNTY TAX MAP DEPARTMENT
226 MIDDLE AVE. ELYRIA, OHIO

SURVEYED BY: DALE R. HAYWOOD

CLOSURE: .01:10,000

MAP PAGE(S): 5-00-012-A

APPROVED BY: RRM DATE: 2-14-12

SCALE: 1"= 50' PRIOR INST.: DV XXXX/XXX