

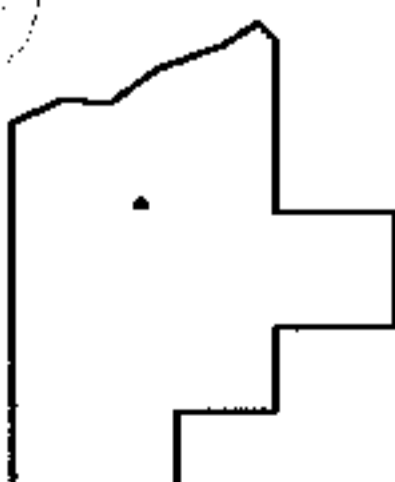
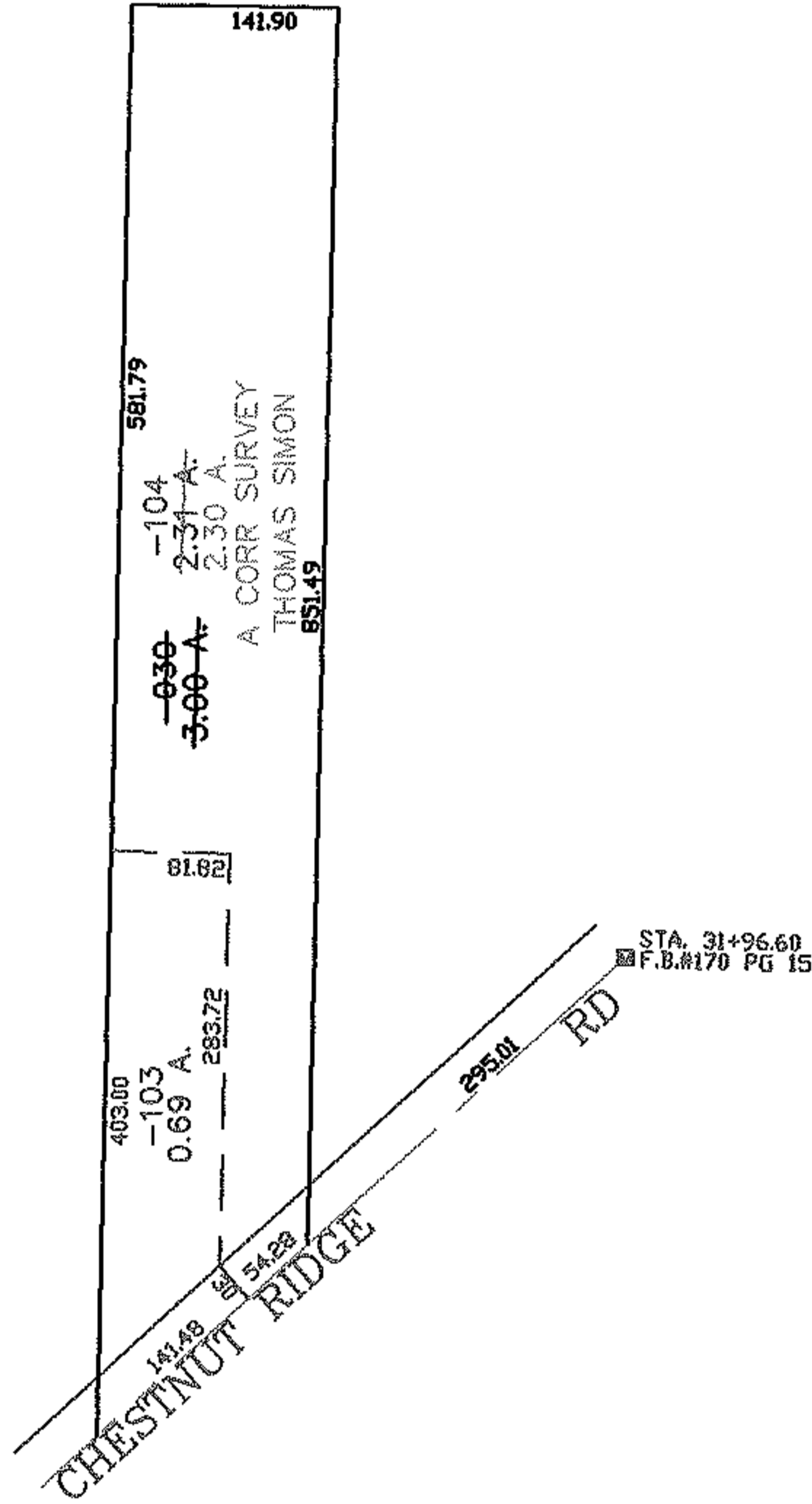
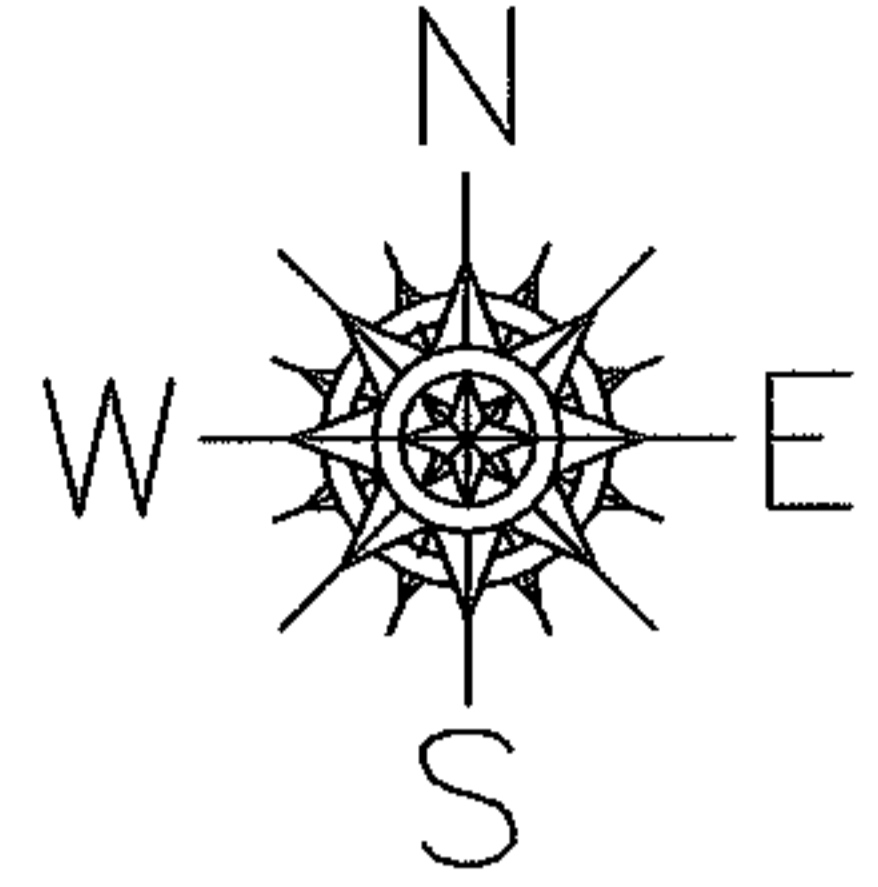
RASTER

PARENT PARCEL: 07-00-023-101-030

CHILD PARCEL: 07-00-023-101-103, -104

STARTING POINT: CENTERLINE OF CHESTNUT RIDGE RD & STATION 31 +96.60

07-02436



SPLITS/DEEDS PROCESSED
LORAIN COUNTY TAX MAP DEPARTMENT
226 MIDDLE AVE. ELYRIA, OHIO

SURVEYED BY: THOMAS SIMON
 CLOSURE: 0.00 : 10.000
 MAP PAGE(S): 07-00-023-B
 APPROVED BY: JAH DATE: 8-9-07
 SCALE: 1" = 200 PRIOR INSTRUMENT: 20030973309