

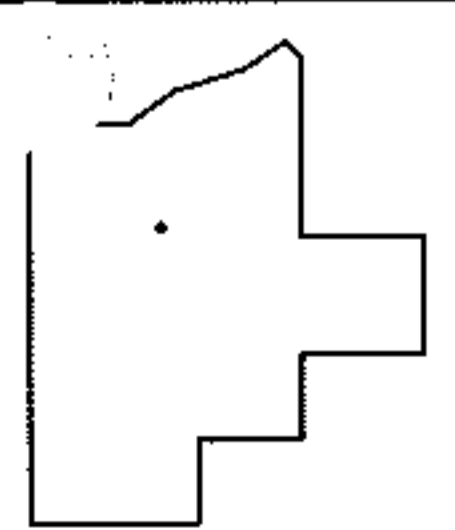
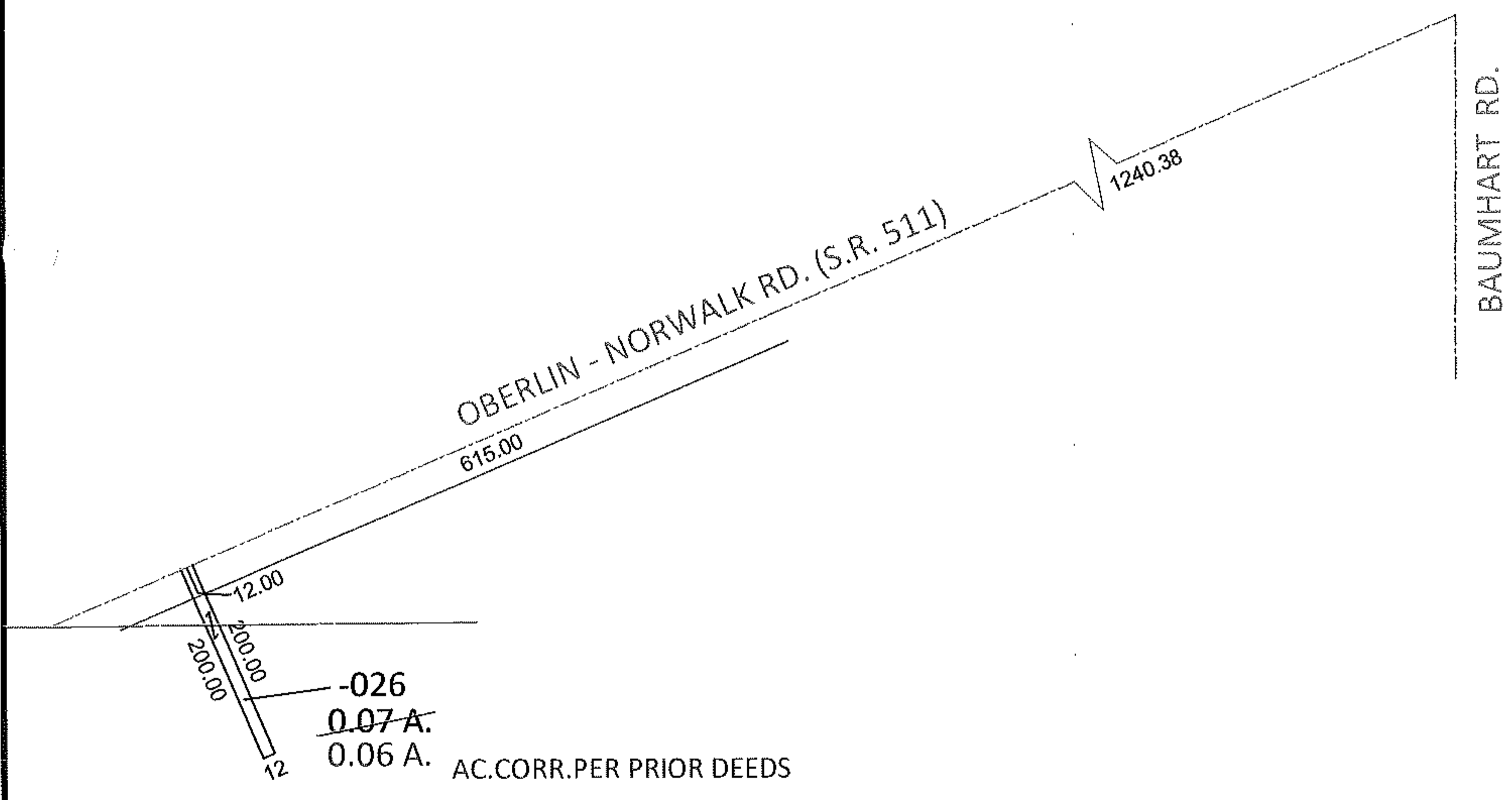
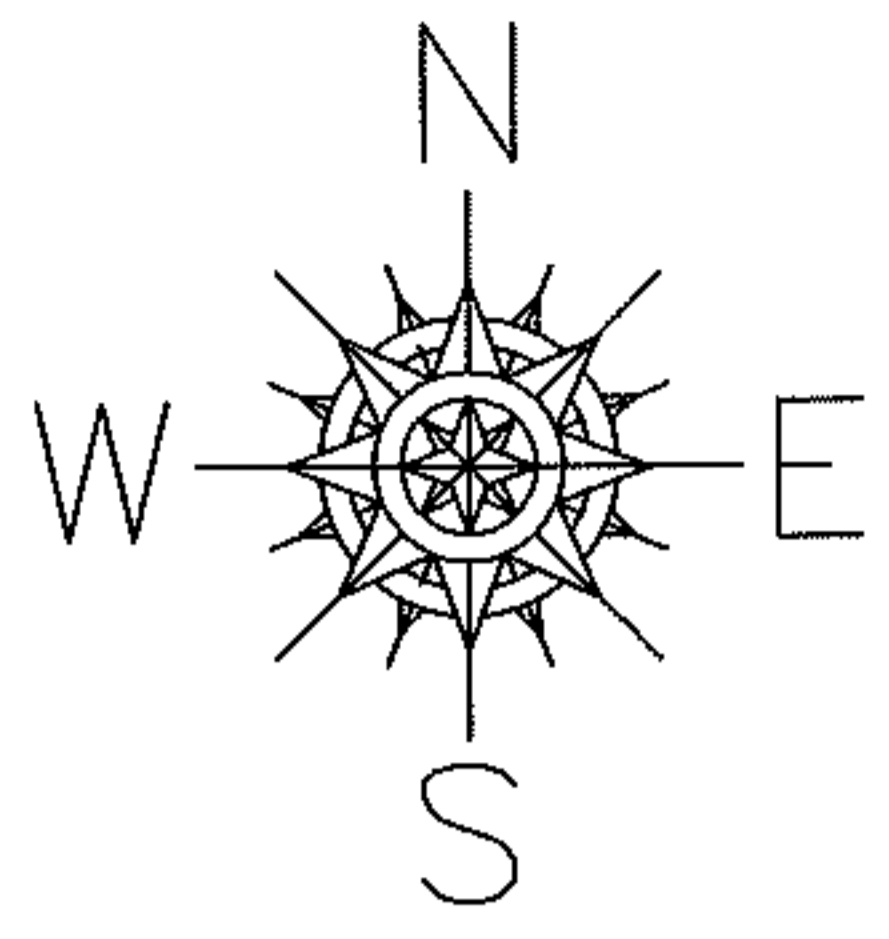
RASTER

PARENT PARCEL: 08-12-019-000-026

12-02433-A

CHILD PARCEL:

STARTING POINT: INTERSECTION OF C/L OF S.R. 511 AND C/L OF BAUMHART RD.



SPLITS/DEEDS PROCESSED

LORAIN COUNTY TAX MAP DEPARTMENT
226 MIDDLE AVE. ELYRIA, OHIO

SURVEYED BY:	N/A
CLOSURE:	.00:10,000
MAP PAGE(S):	8-H
APPROVED BY:	RRM DATE: 1-23-12
SCALE:	1"= 200 PRIOR INST.: OR 1351/717