

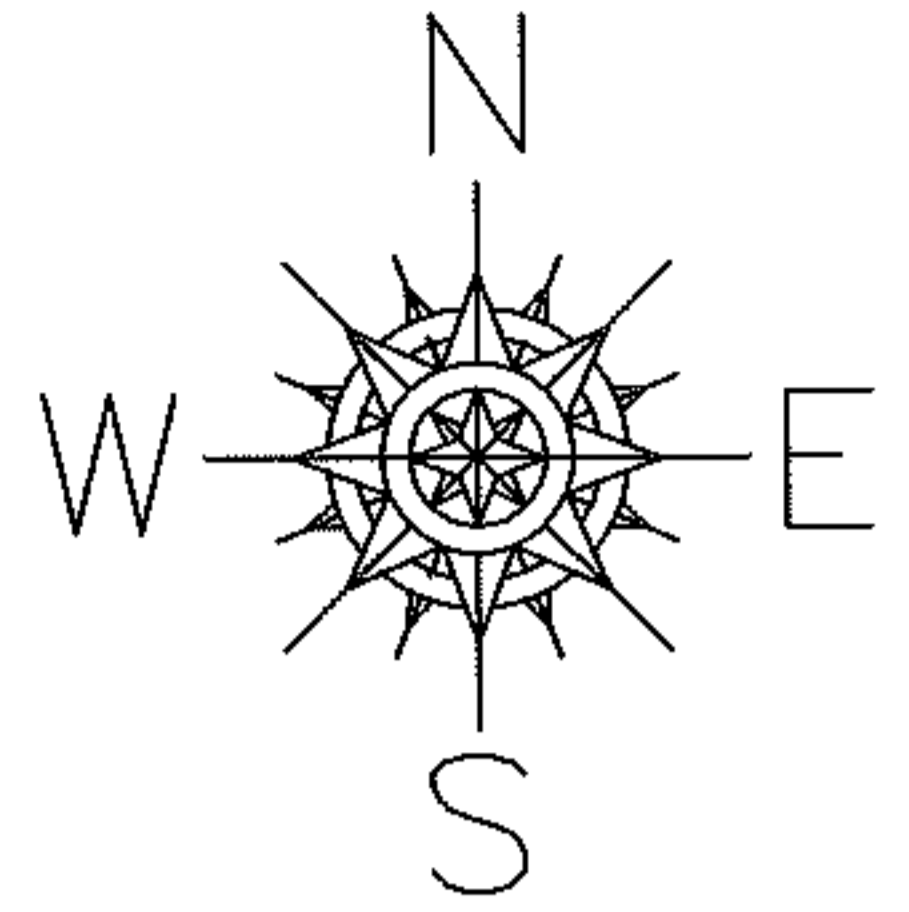
RASTER

PARENT PARCEL: 11-00-095-000-010

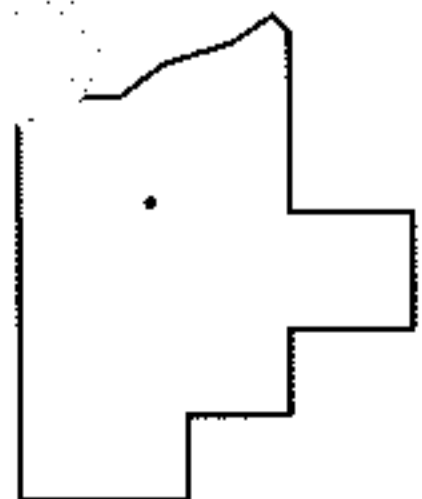
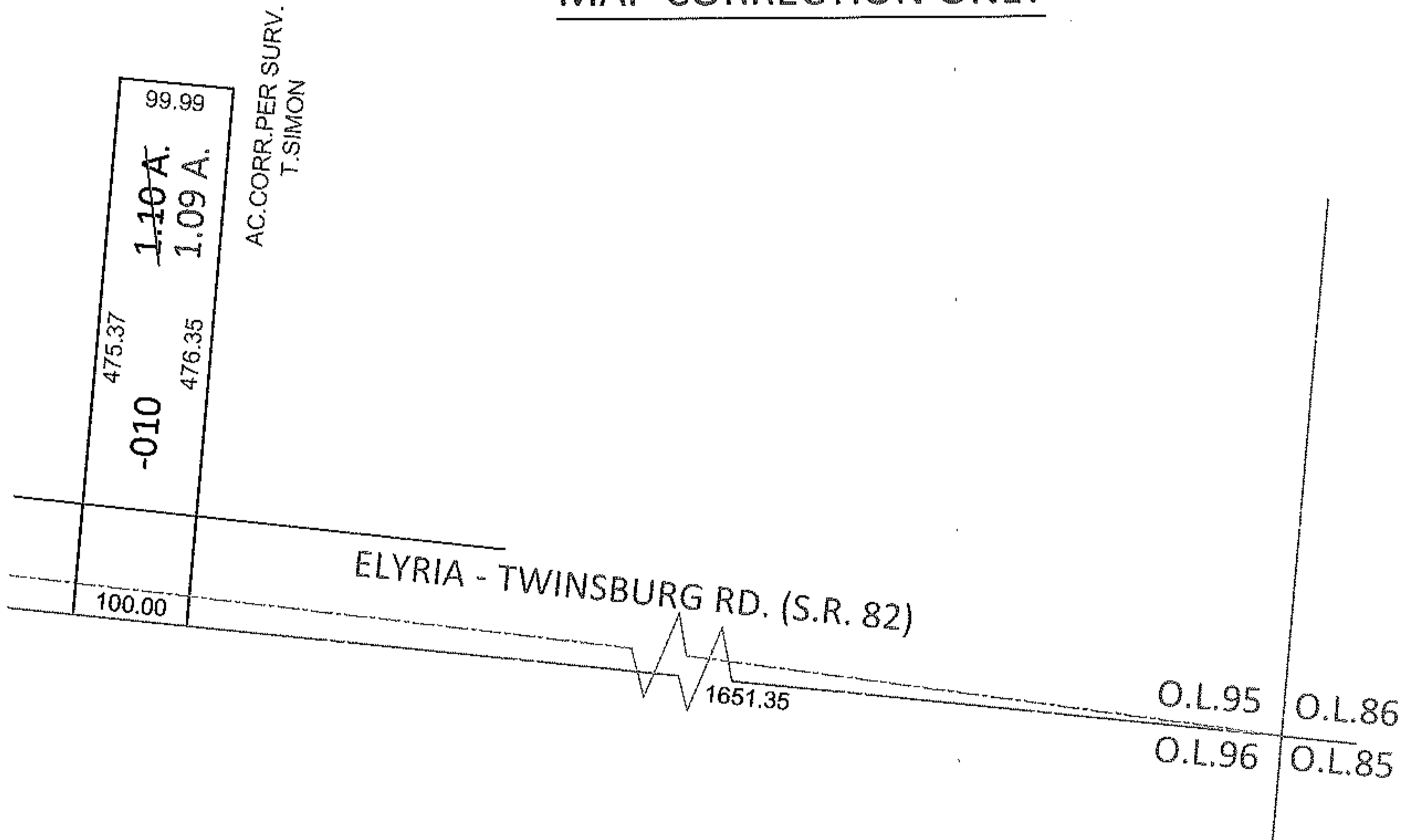
CHILD PARCEL: _____

STARTING POINT: SOUTHEAST CORNER OF O.L.95

12-02432-A



MAP CORRECTION ONLY



LORAIN COUNTY TAX MAP DEPARTMENT
226 MIDDLE AVE. ELYRIA, OHIO

SURVEYED BY: THOMAS A. SIMON

CLOSURE: .00:10,000

MAP PAGE(S): 11-00-095-B

APPROVED BY: RRM DATE: 1-19-12

SCALE: 1"= 200 PRIOR INST.: 20030882591