

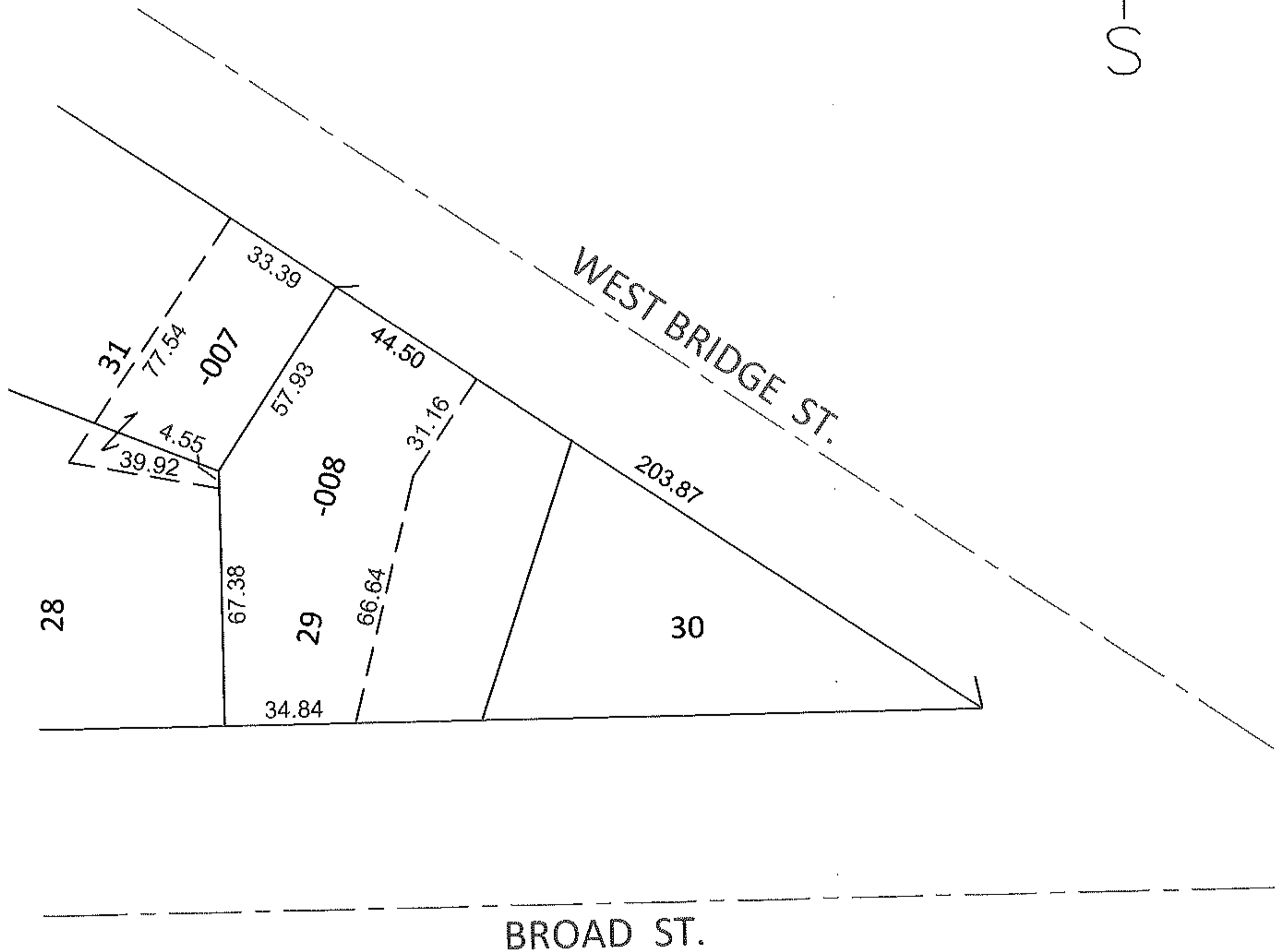
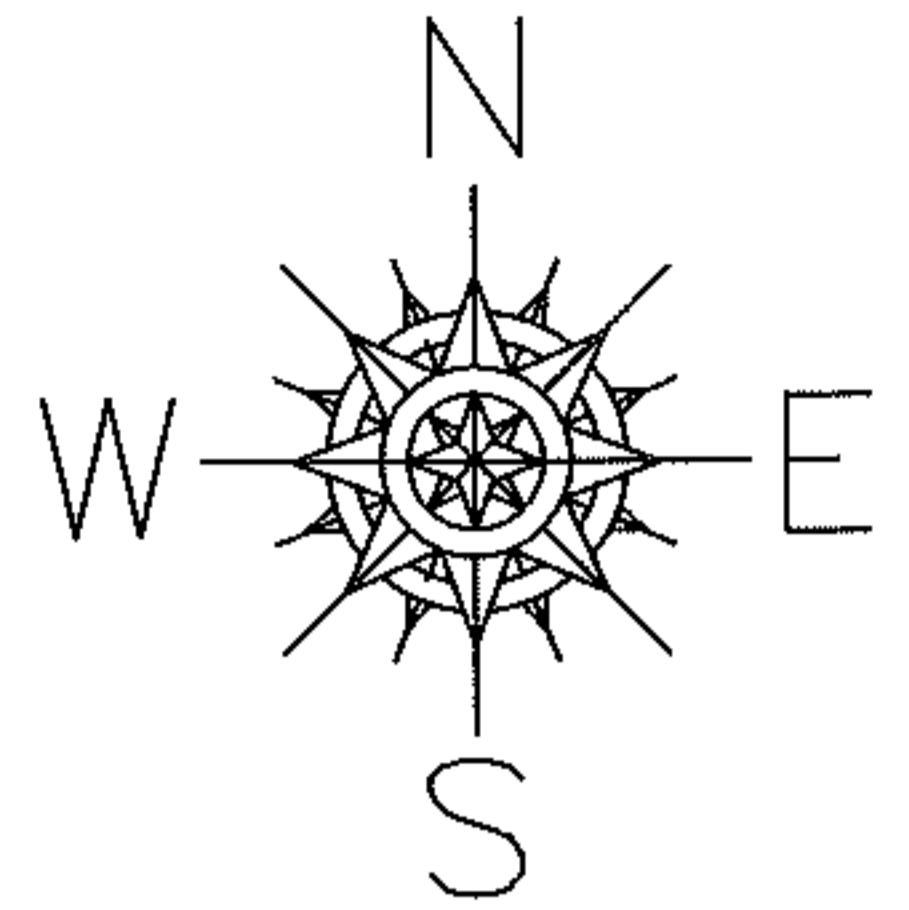
RASTER

PARENT PARCEL: 06-26-070-000-007, -008

12-02430-C

CHILD PARCEL:

STARTING POINT: INTERSECTION OF SOUTH LINE OF WEST BRIDGE ST. AND NORTH LINE OF BROAD ST.



FRONTAGE AND DEPTH CORRECTION

06-26-070-000-007

06-26-070-000-008

33.39 X 77.54

44.50 X 125.31

~~33 X~~

~~44.50 X~~

CORRECTION PER SURV. D.HAYWOOD

SPLITS/DEEDS PROCESSED

LORAIN COUNTY TAX MAP DEPARTMENT
226 MIDDLE AVE. ELYRIA, OHIO

SURVEYED BY: DALE R. HAYWOOD

CLOSURE: .01:10,000

MAP PAGE(S): 6-118

APPROVED BY: RRM DATE: 1-18-12

SCALE: 1"= 50' PRIOR INST.: 20110391384

