

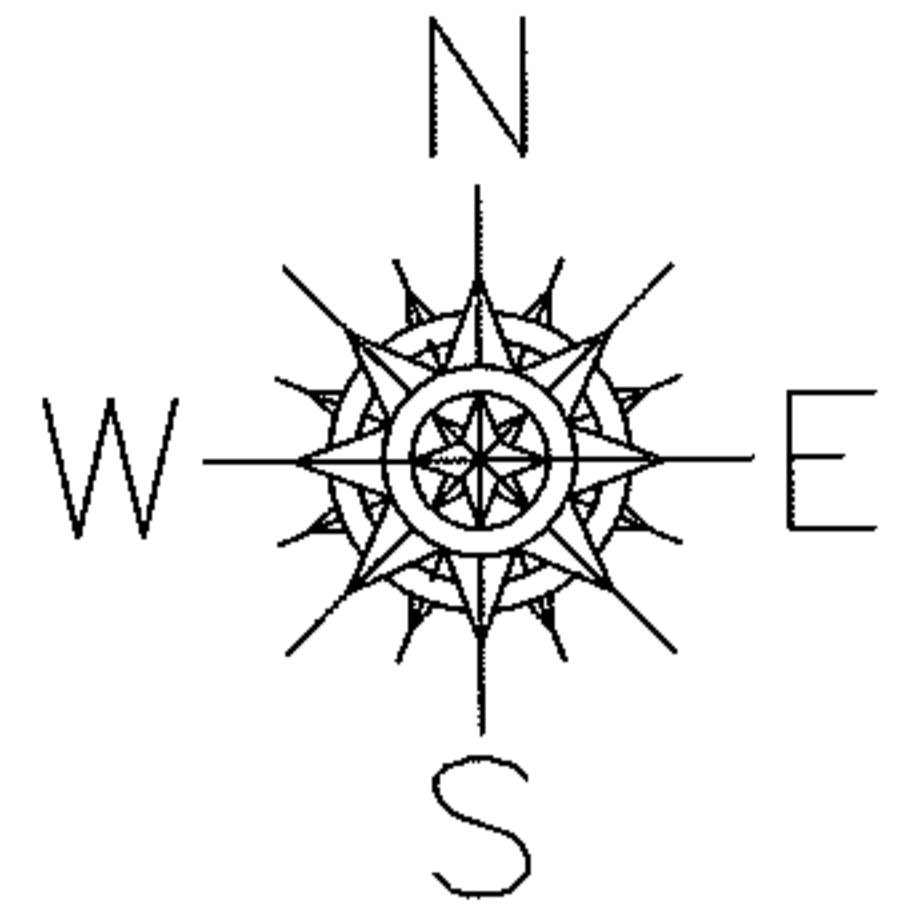
RASTER

PARENT PARCEL: 03-00-027-000-002, 03-00-029-110-002

12-02425-A

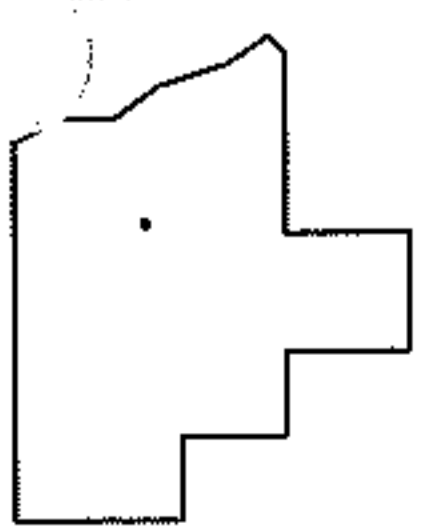
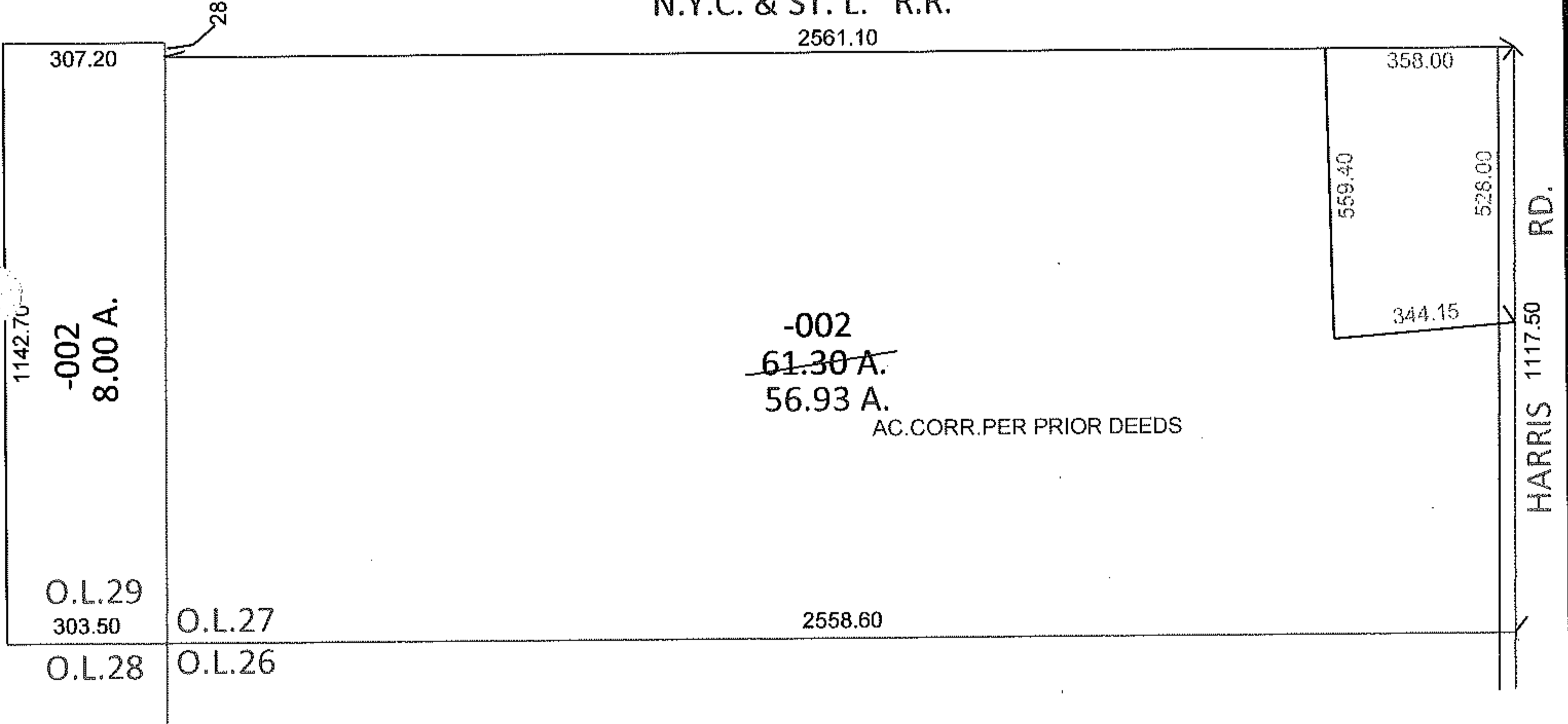
CHILD PARCEL:

STARTING POINT: INTERSECTION OF SOUTH LINE OF O.L.27 AND C/L OF HARRIS RD.



N.Y.C. & ST. L. R.R.

2561.10



SPLITS/DEEDS PROCESSED

LORAIN COUNTY TAX MAP DEPARTMENT
226 MIDDLE AVE. ELYRIA, OHIO

SURVEYED BY: N/A

CLOSURE: N/A

MAP PAGE(S): 3-00-027-A&B, 3-00-029-B

APPROVED BY: RRM DATE: 1-9-12

SCALE: 1"= 400 PRIOR INST.: 20020845351