

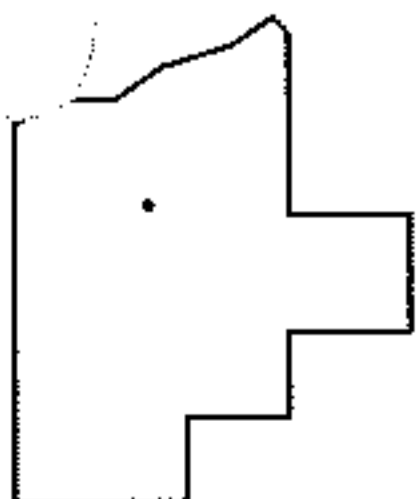
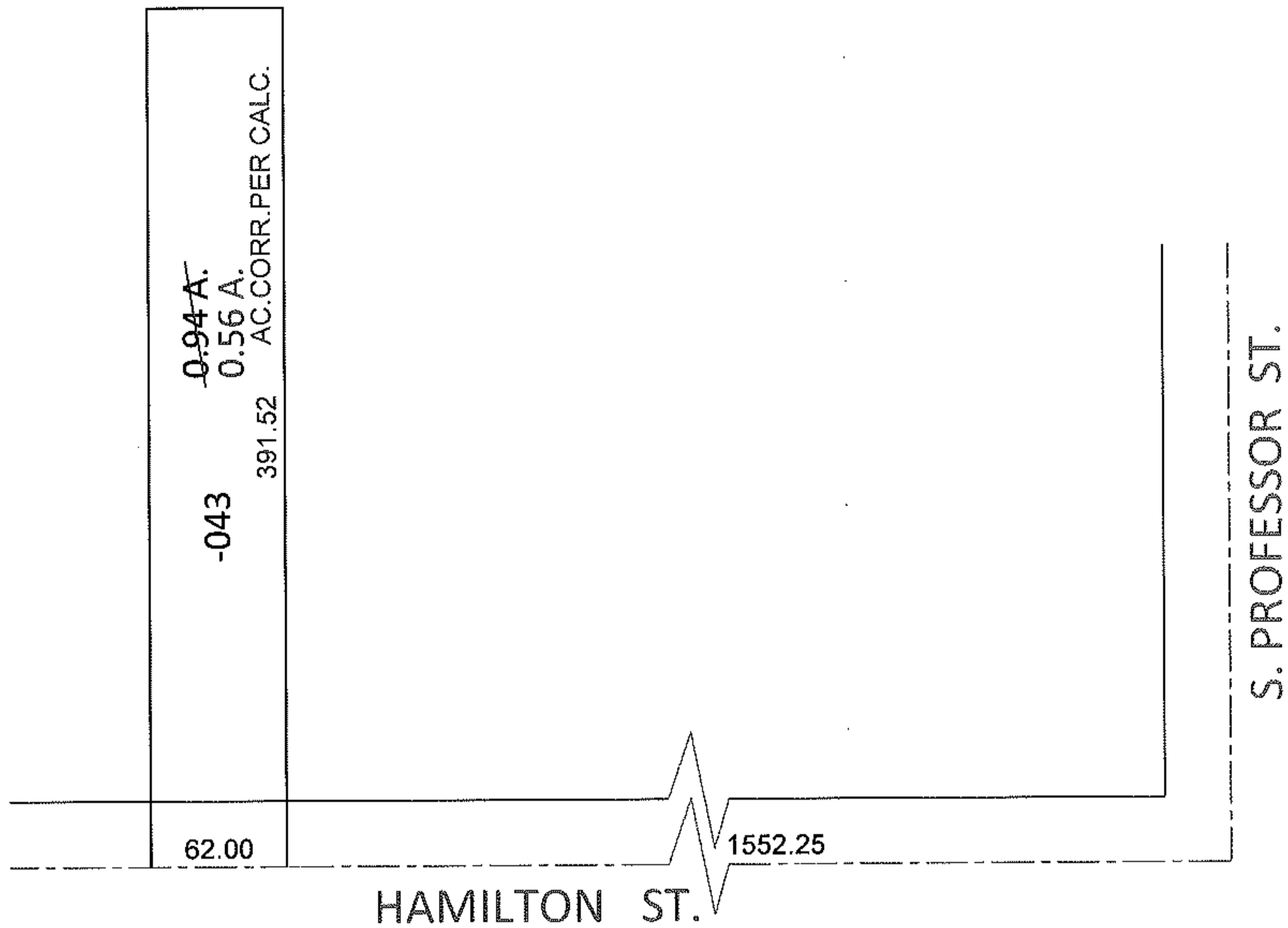
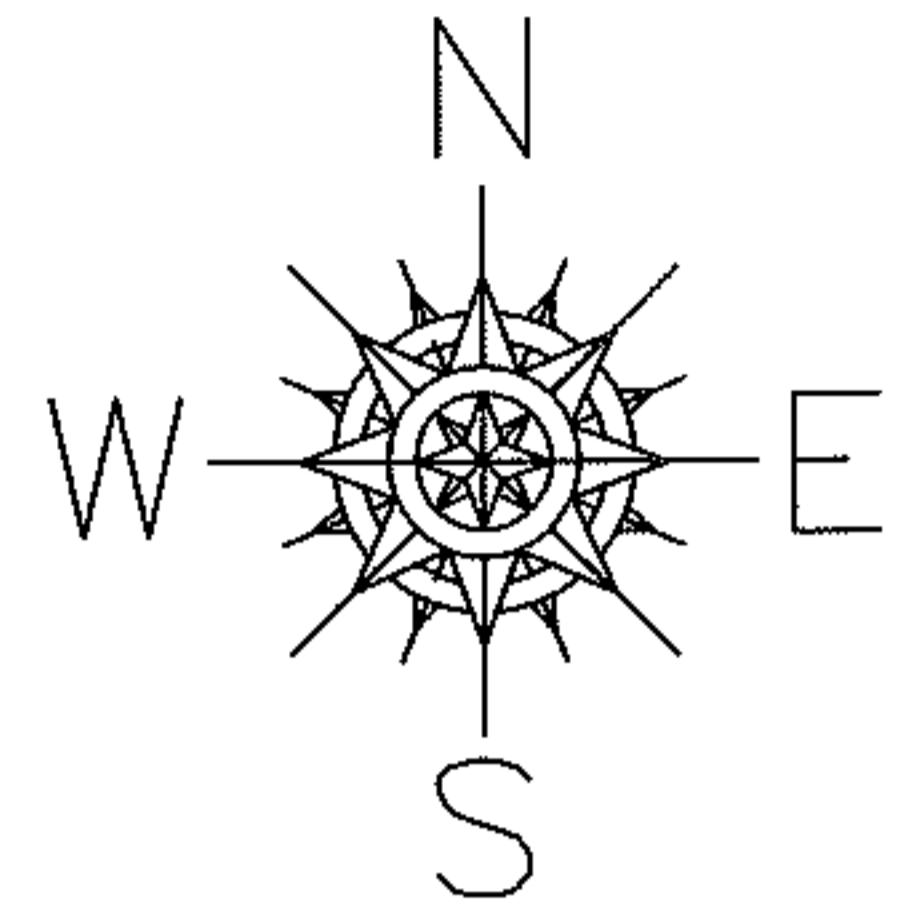
RASTER

PARENT PARCEL: 09-00-095-103-043

12-02423-A

CHILD PARCEL: _____

STARTING POINT: INTERSECTION OF C/L HAMILTON ST. AND C/L OF S. PROFESSOR ST.



SPLITS/DEEDS PROCESSED

LORAIN COUNTY TAX MAP DEPARTMENT
226 MIDDLE AVE. ELYRIA, OHIO

SURVEYED BY: N/A

CLOSURE: N/A

MAP PAGE(S): 9-00-095-A

APPROVED BY: RRM DATE: 1-9-12

SCALE: 1" = 100 PRIOR INST.: 20020861380