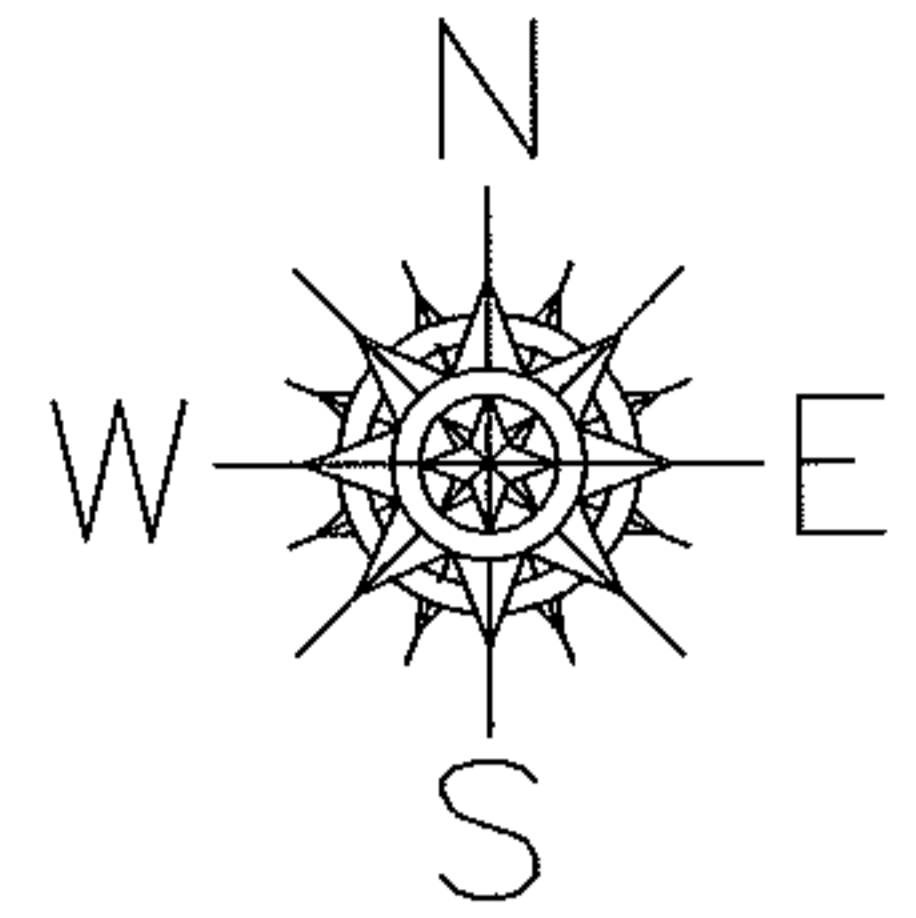


PARENT PARCEL: 07-00-017-102-025, -026, 07-00-017-103-001, -022, -023, 07-00-017-104-001

CHILD PARCEL: _____

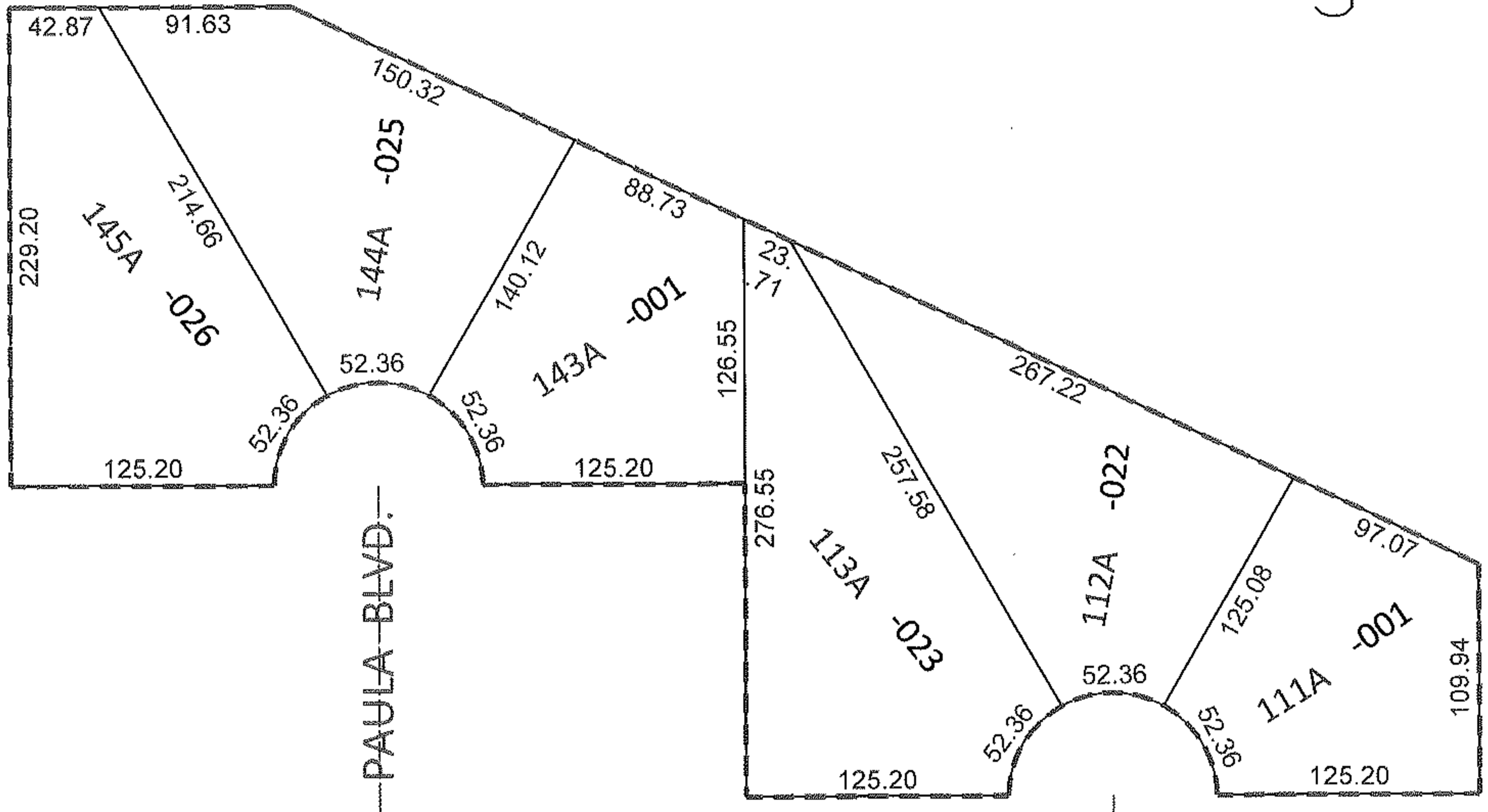
STARTING POINT: S/L'S 111-114 AND 143-146 IN RIDGEVILLE PARK SUB.(VOL.20 PG.20)

12-02419-C



MAP CORRECTION

AMENDMENT TO RIDGEVILLE PARK SUBDIVISION
DV 727/446-451



FRONTAGE AND DEPTH CORRECTION

07-00-017-102-025 52.36 X 214.66 50 X 215	07-00-017-102-026 52.36 X 214.66 50 X 215	07-00-017-103-001 52.36 X 140.12 50 X 140 IRR
07-00-017-103-022 52.36 X 257.58 50 X 258 IRR	07-00-017-103-023 52.36 X 257.58 50 X 258 IRR	07-00-017-104-001 52.36 X 125.08 50 X 125
CORR. PER AMEND. DV 727/446		

SPLITS/DEEDS PROCESSED

LORAIN COUNTY TAX MAP DEPARTMENT
226 MIDDLE AVE. ELYRIA, OHIO

SURVEYED BY: N/A
CLOSURE: .01:10,000
MAP PAGE(S): 07-00-017-A
APPROVED BY: RRM DATE: 1-6-12
SCALE: 1"= 100 PRIOR INST.: DV 727/446