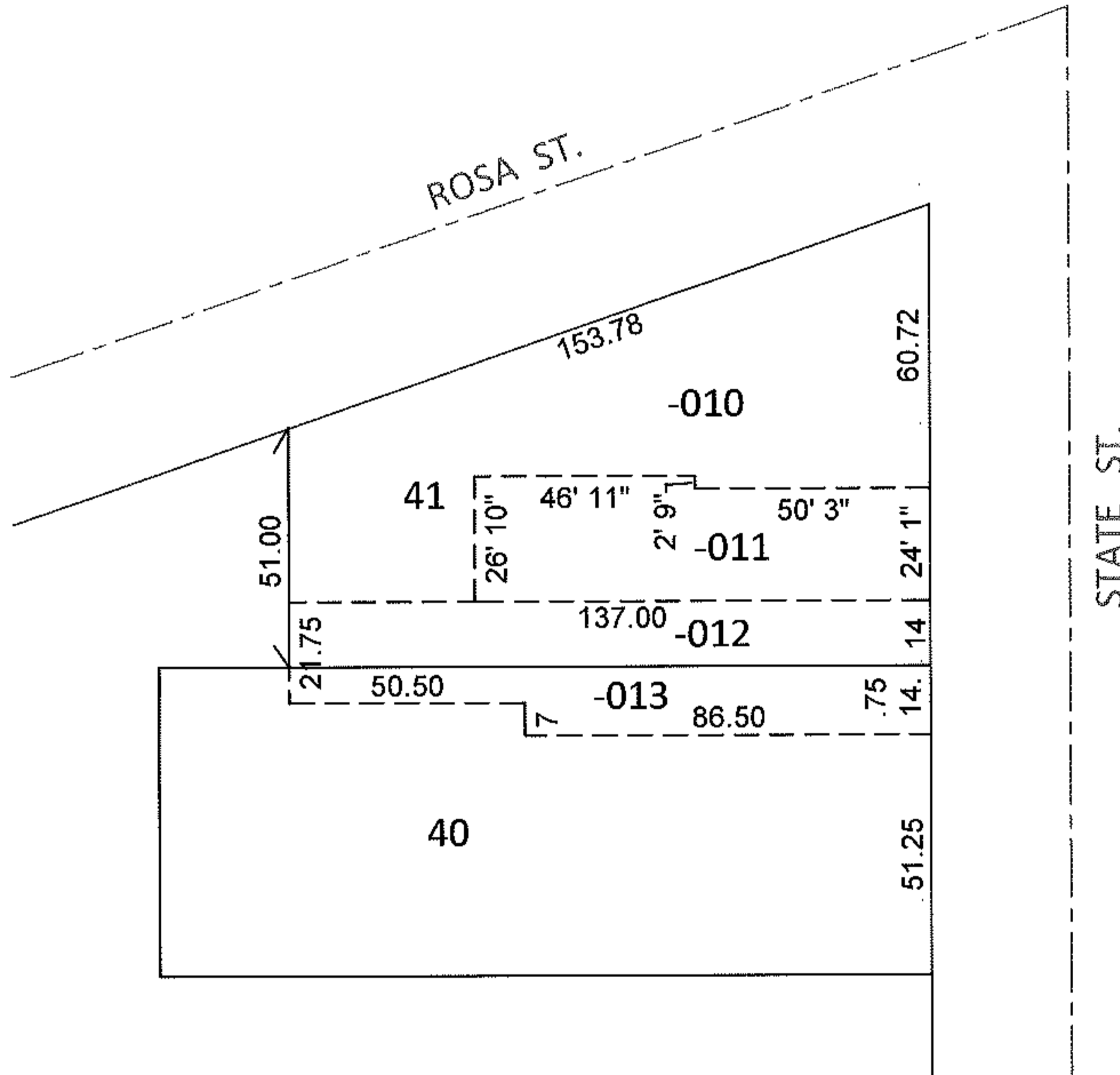
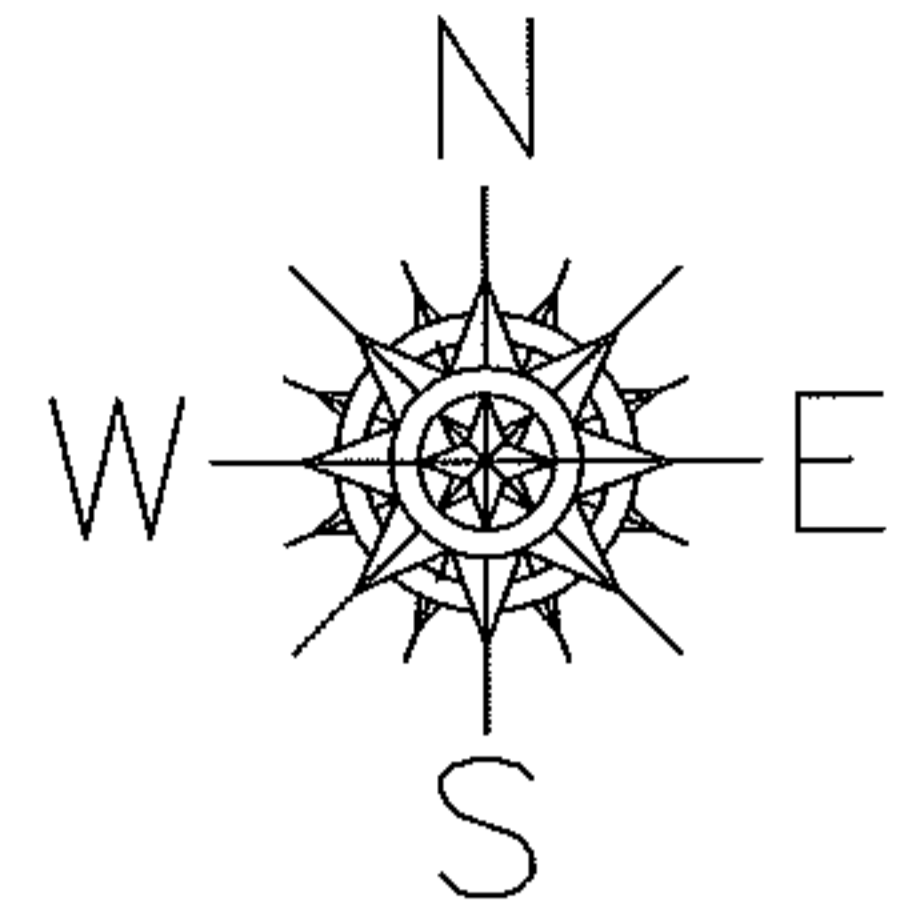


PARENT PARCEL: 13-11-016-108-010 THRU -013

12-02418-C

CHILD PARCEL: _____

STARTING POINT: PART OF S/L'S 40 & 41 IN PLAT OF KIPTON VILLAGE (VOL.1 PG.10)



FRONTAGE AND DEPTH CORRECTIONS

13-11-016-108-010	13-11-016-108-011	13-11-016-108-012	13-11-016-108-013
60.72 X 153.78 IRR	24' 1" X 97' 2"	14 X 137	14.75 X 137 IRR
59 X	24 X 97	14 X	14.75 X IRR

PER PRIOR DEEDS

SPLITS/DEEDS PROCESSED

LORAIN COUNTY TAX MAP DEPARTMENT
226 MIDDLE AVE. ELYRIA, OHIO

SURVEYED BY: N/A
 CLOSURE: N/A
 MAP PAGE(S): 13-11-016
 APPROVED BY: RRM DATE: 1-5-12
 SCALE: 1" = 50' PRIOR INST.: OR 1234/3

