

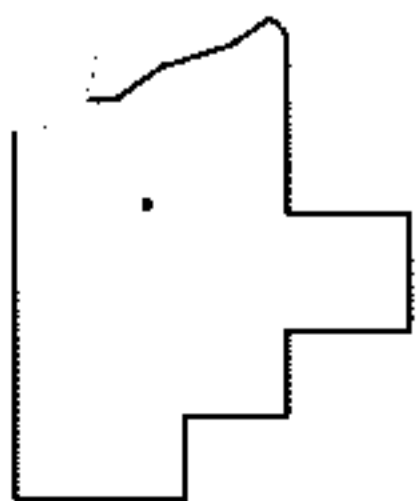
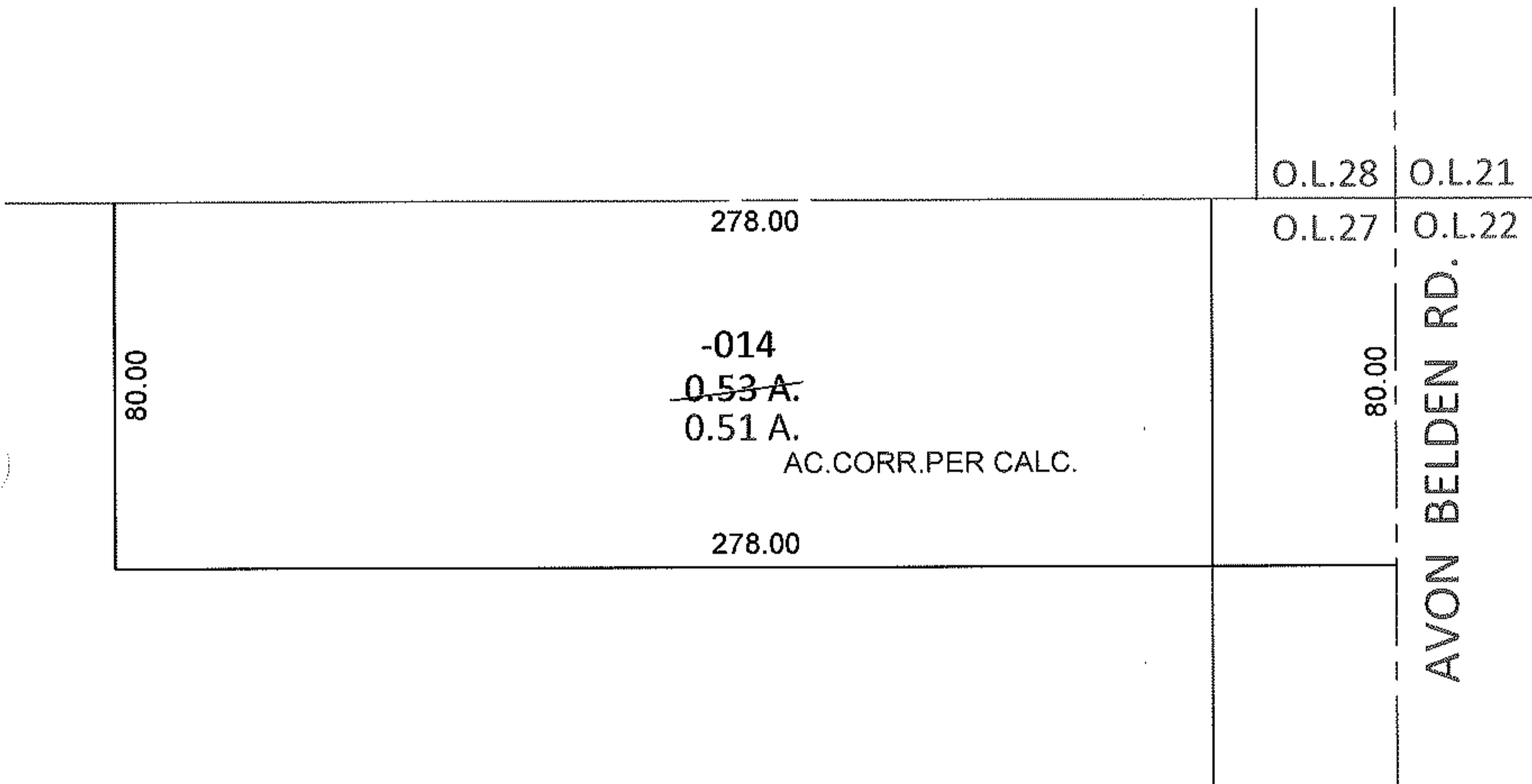
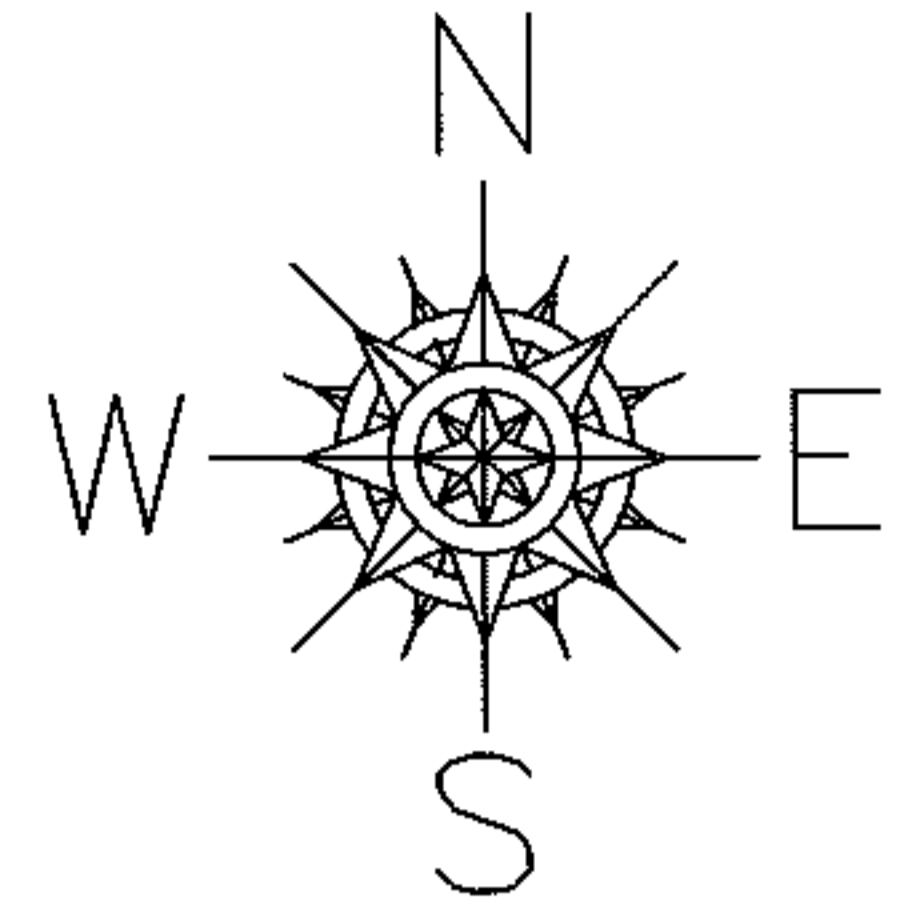
RASTER

PARENT PARCEL: 07-00-027-104-014

CHILD PARCEL: _____

STARTING POINT: NORTHEAST CORNER OF O.L.27

12-02416-A



SPLITS/DEEDS PROCESSED

LORAIN COUNTY TAX MAP DEPARTMENT
226 MIDDLE AVE. ELYRIA, OHIO

SURVEYED BY: N/A

CLOSURE: N/A

MAP PAGE(S): 7-00-027-B

APPROVED BY: RRM DATE: 1-4-12

SCALE: 1"= 50' PRIOR INST.: 19990625964