

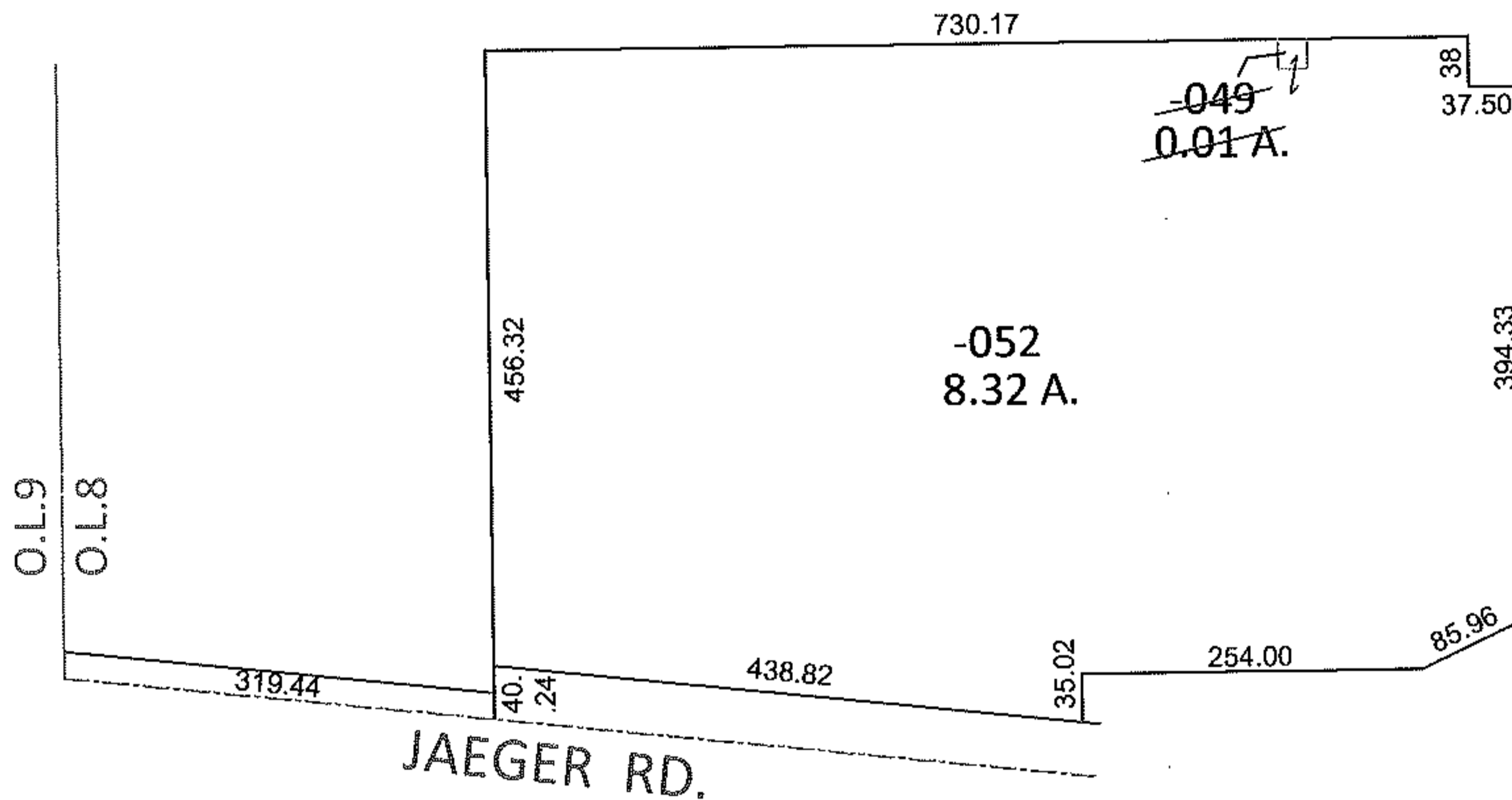
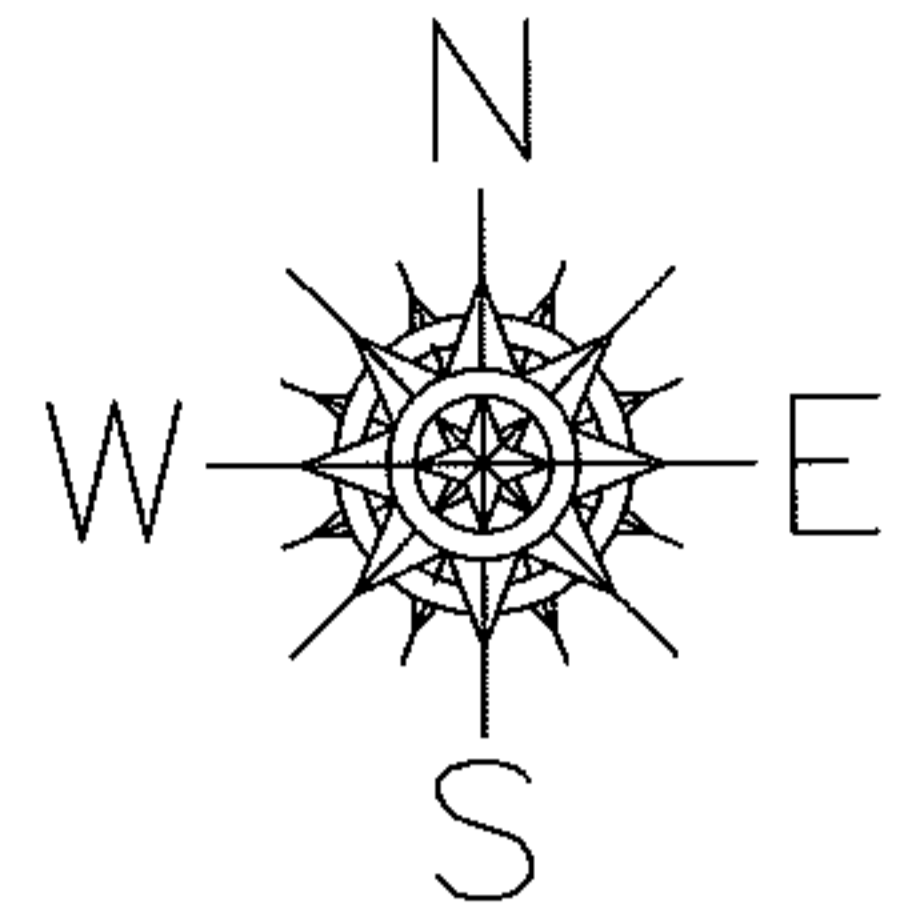
REGISTER

PARENT PARCEL: 02-02-008-107-049

CHILD PARCEL: DROP FROM DUP.

STARTING POINT: XXXXXX

12-02415-X



DROP FROM DUP.

02-02-008-107-049

0.01 A.

SHOULD HAVE BEEN COMBINED WITH

02-02-008-107-052

FOR DEED SEE #20090290056

SPLITS/DEEDS PROCESSED

LORAIN COUNTY TAX MAP DEPARTMENT
226 MIDDLE AVE. ELYRIA, OHIO

SURVEYED BY: TREVOR A. BIXLER

CLOSURE: .01:10,000

MAP PAGE(S): 2-02-008-B

APPROVED BY: RRM DATE: 1-4-12

SCALE: 1"=200 PRIOR INST.: 20090290056