

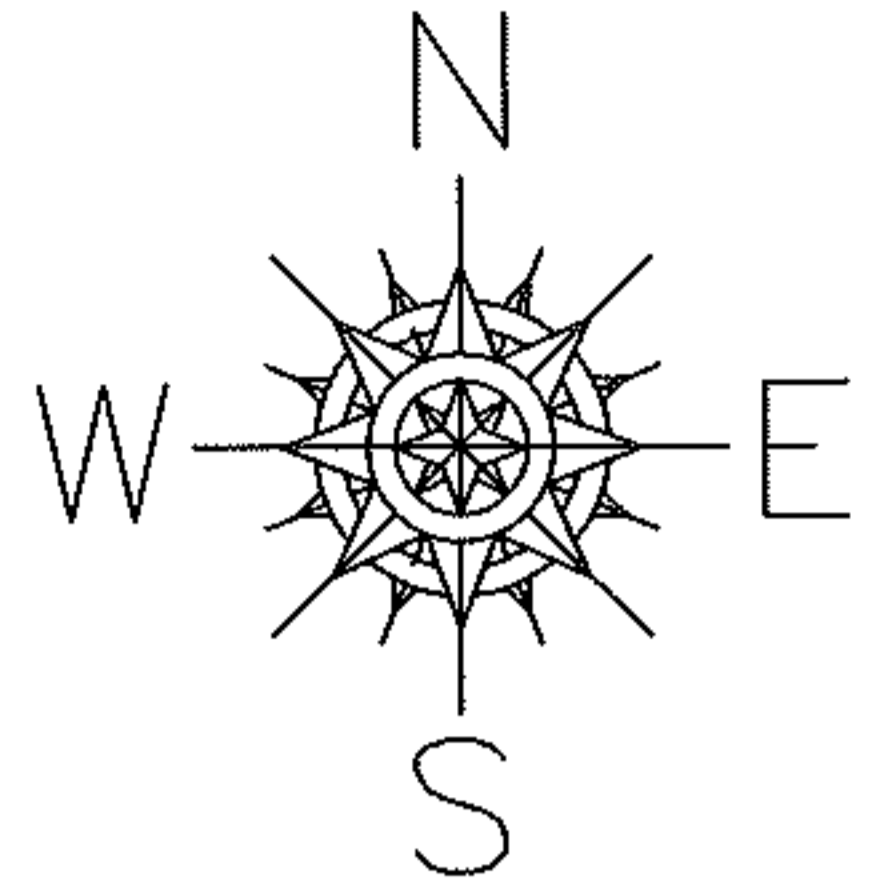
RASTER

PARENT PARCEL: 06-24-092-000-005

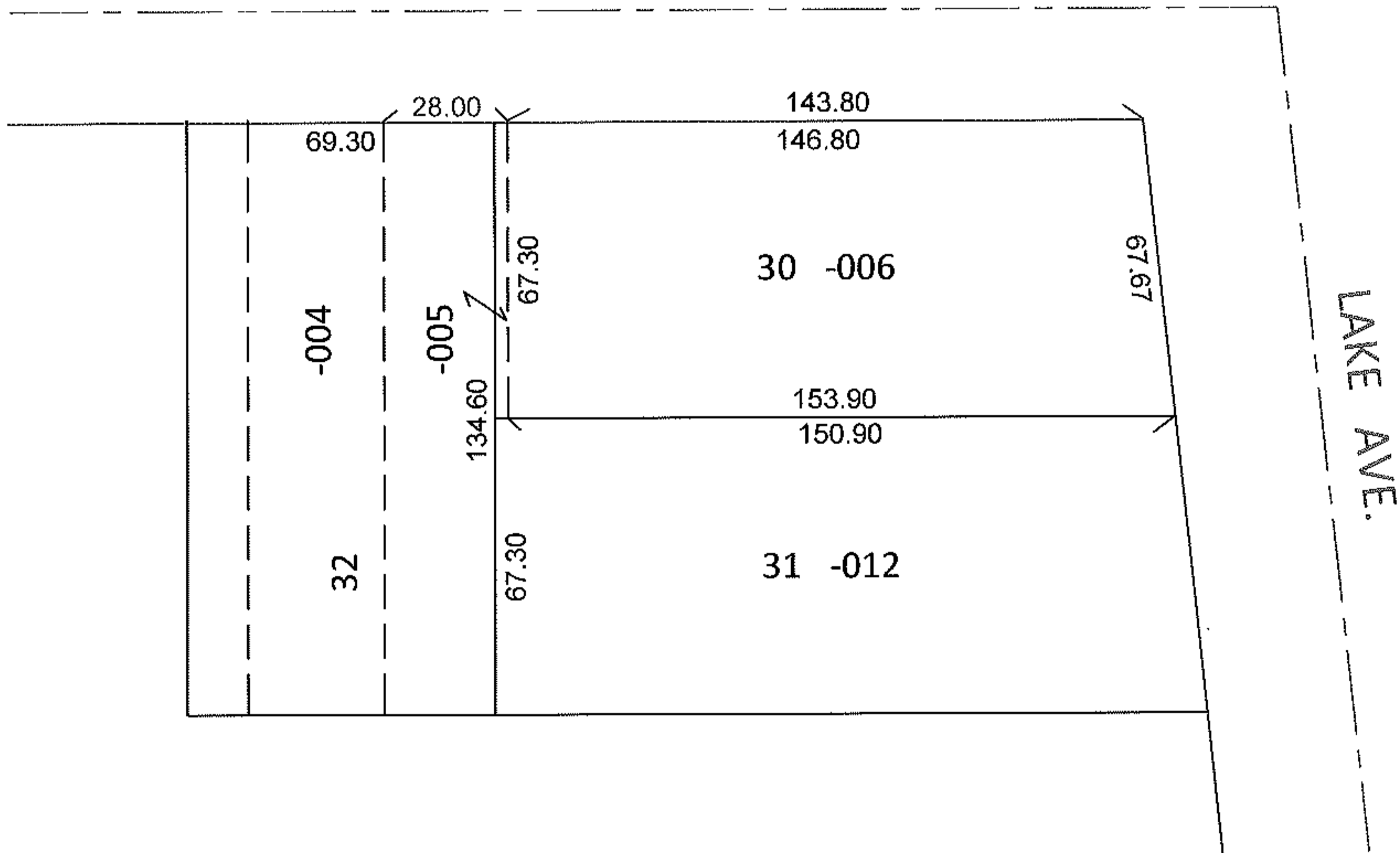
CHILD PARCEL:

STARTING POINT: PART OF S/L'S 30 & 32 IN BRONSON'S 2ND ADD.(VOL.2 PG.13)

12-02414-C



GARVIN AVE.



FRONTAGE AND DEPTH CORRECTION

06-24-092-000-005

28 X 134.60

~~27 X 134~~

PER PRIOR DEEDS

SPLITS/DEEDS PROCESSED

LORAIN COUNTY TAX MAP DEPARTMENT
226 MIDDLE AVE. ELYRIA, OHIO

SURVEYED BY: N/A

CLOSURE: N/A

MAP PAGE(S): 6-99

APPROVED BY: RRM DATE: 1-4-12

SCALE: 1"= 50' PRIOR INST.: OR 638/492