

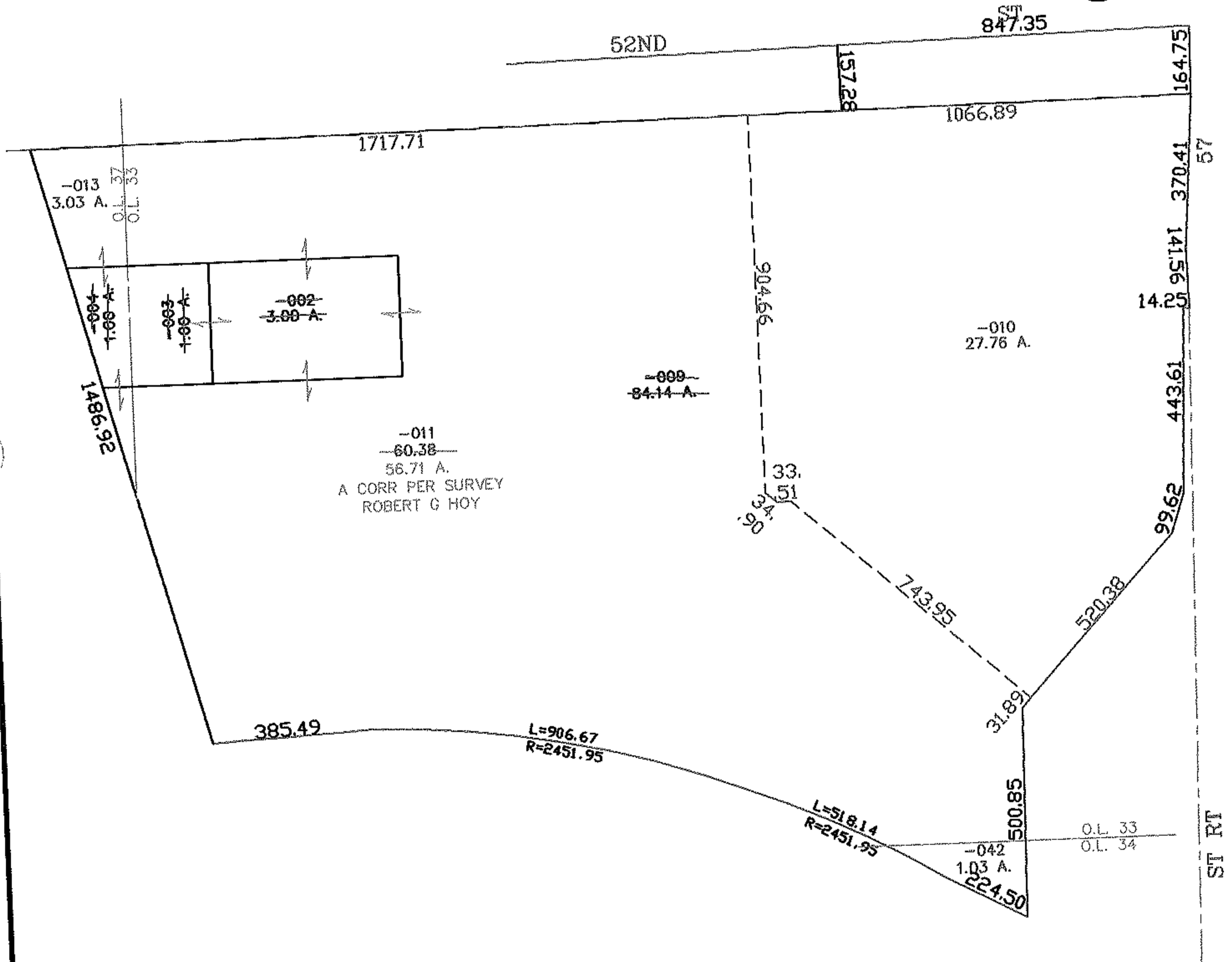
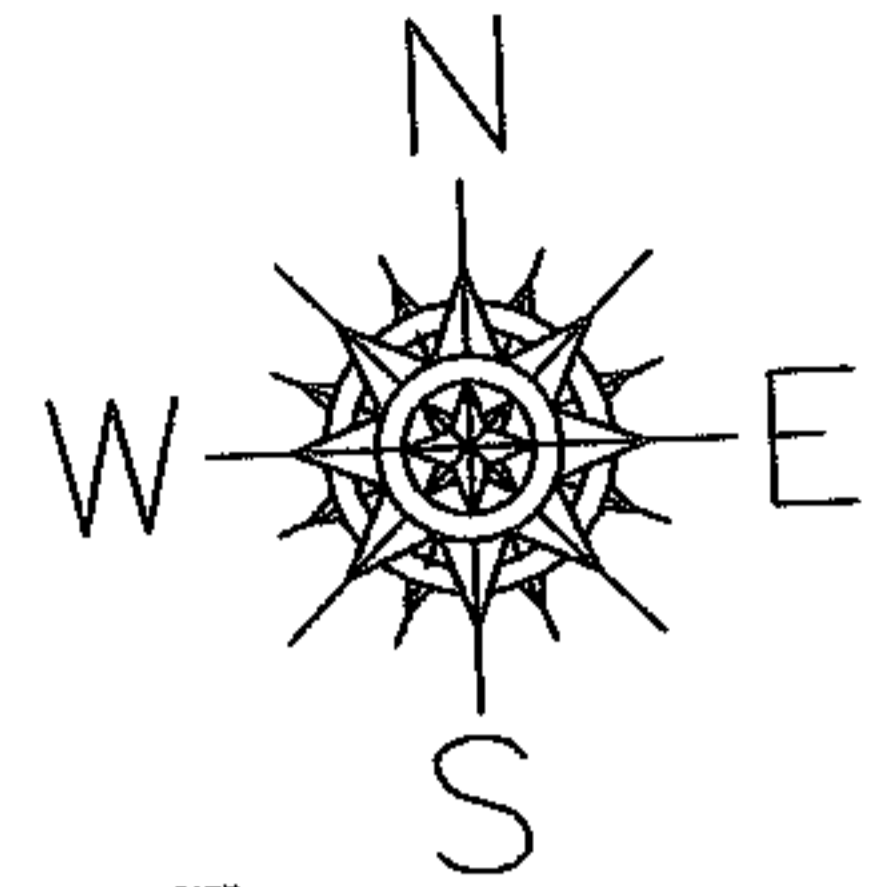
RASTER

07-02413

PARENT PARCEL: 06-24-033-102-009

CHILD PARCEL: 06-24-033-102-010, -011

STARTING POINT: RIGHT AWAY LINE OF 52ND ST & RIGHT AWAY LINE OF ST RT 57



SPLITS/DEEDS PROCESSED

LORAIN COUNTY TAX MAP DEPARTMENT
226 MIDDLE AVE. ELYRIA, OHIO

SURVEYED BY: ROBERT G HOY

CLOSURE: 0.00 : 10.000

MAP PAGE(S): 6-45

APPROVED BY: JAH DATE: 6-25-07

SCALE: 1" = 400 PRIOR INSTRUMENT: DV 777/543