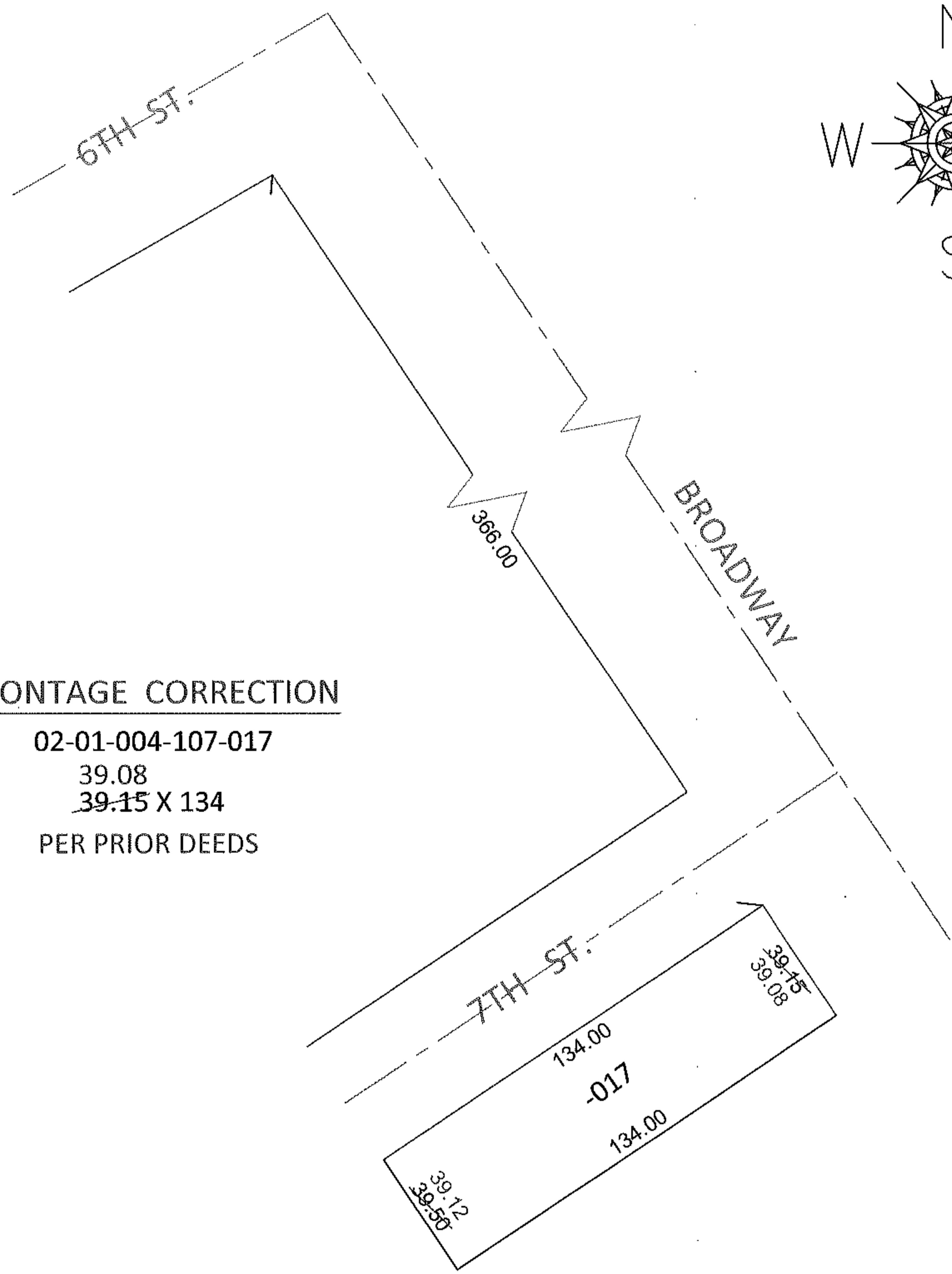


RASTER

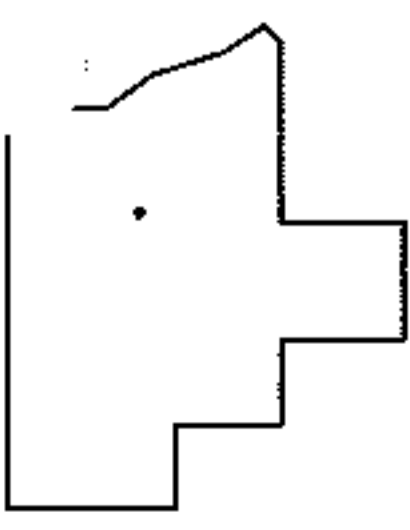
PARENT PARCEL: 02-01-004-107-017
CHILD PARCEL: _____
STARTING POINT: INTERSECTION OF SOUTH LINE OF 6TH ST. AND WEST LINE OF BROADWAY

11-02402-C



FRONTAGE CORRECTION

02-01-004-107-017
39.08
39.15 X 134
PER PRIOR DEEDS



SPLITS/DEEDS PROCESSED

LORAIN COUNTY TAX MAP DEPARTMENT
226 MIDDLE AVE. ELYRIA, OHIO

SURVEYED BY: N/A
CLOSURE: N/A
MAP PAGE(S): 2-01-004-B
APPROVED BY: RRM DATE: 12-5-11
SCALE: 1"= 50' PRIOR INST.: 20080278513