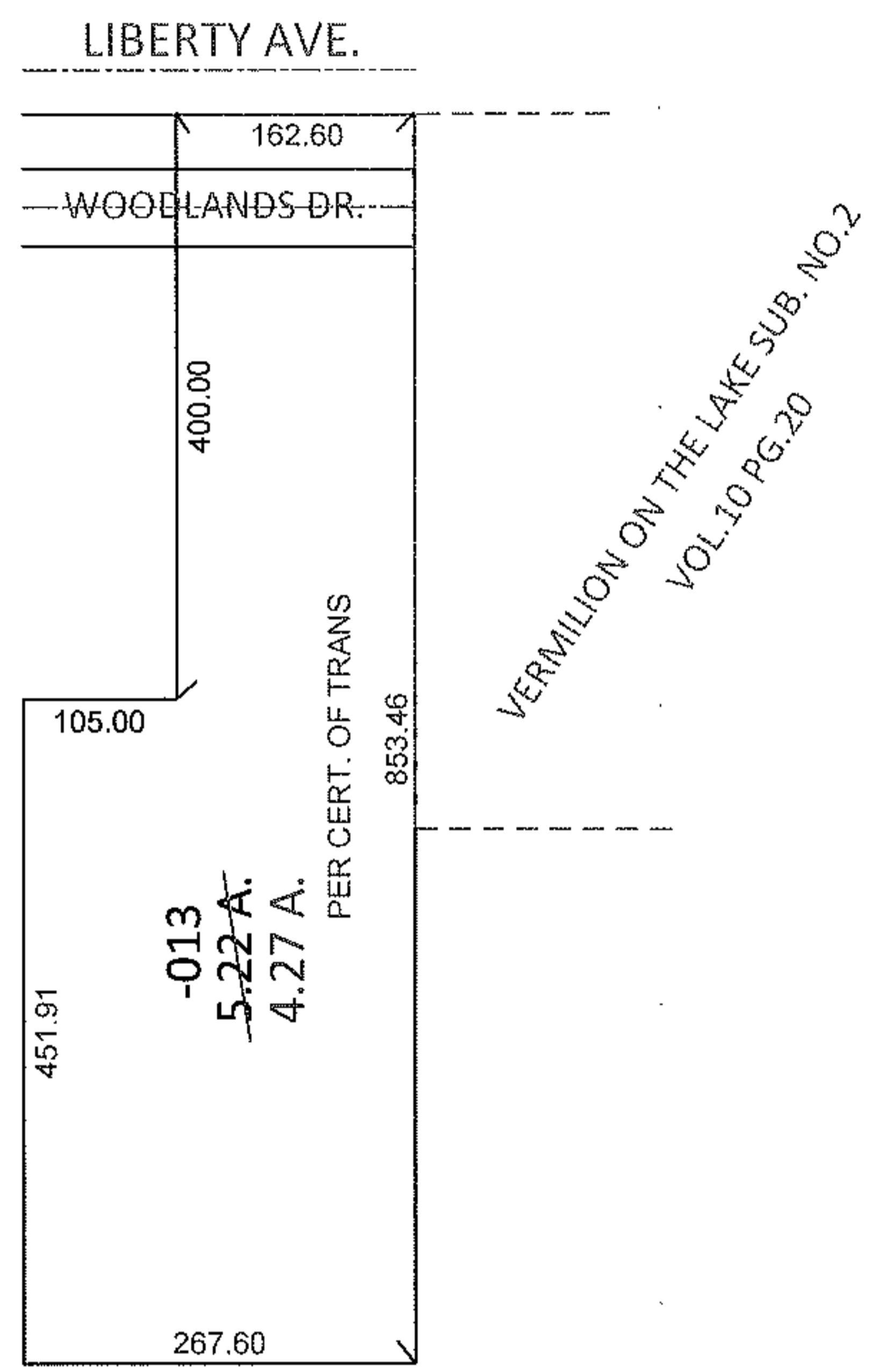
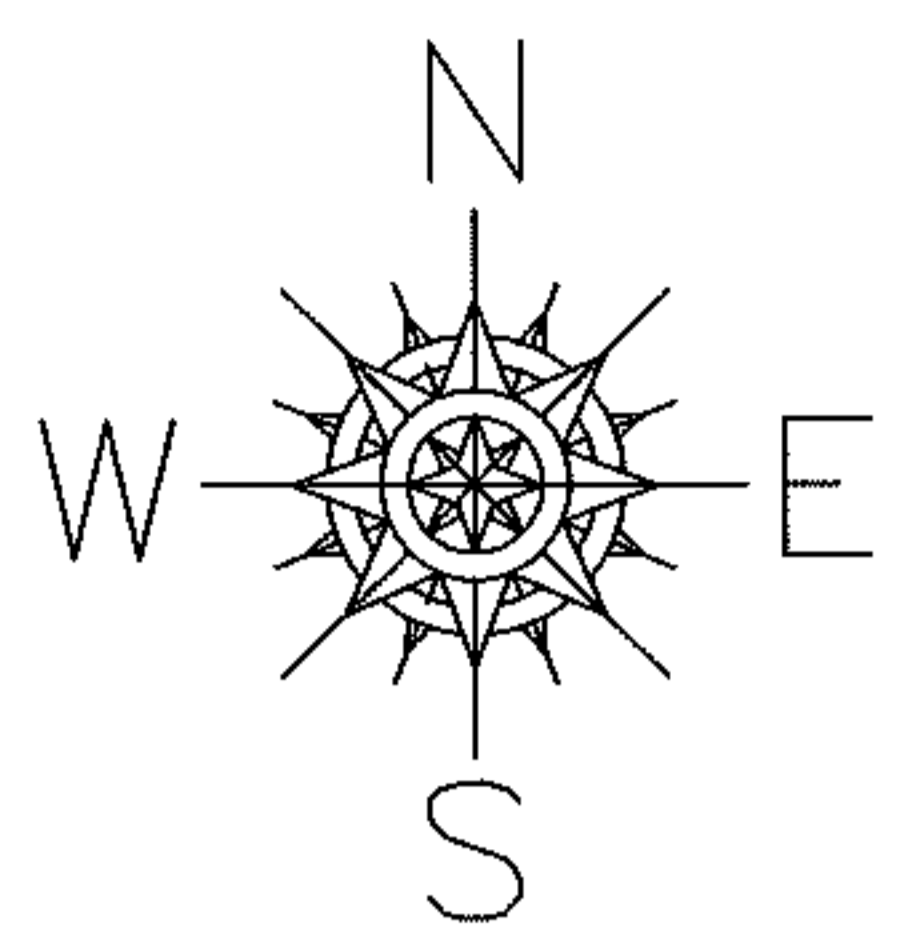


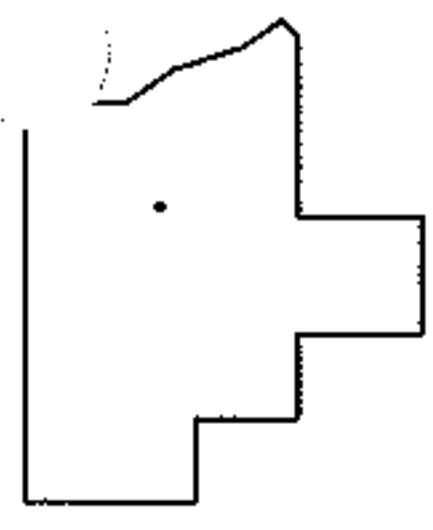
RASTER

PARENT PARCEL: 01-00-002-115-013
CHILD PARCEL: _____
STARTING POINT: INTERSECTION OF SOUTH LINE OF LIBERTY AVE. AND THE WEST LINE OF
VERMILION ON THE LAKE SUB. NO.2 (VOL.10 PG.20)

11-02401-A



ACERAGE CORRECTION
PER CERTIFICATE OF TRANSFER
CASE NO. 2006ES00659
PRIOR DEEDS WERE ALL MISSING EXCEPTION



SPLITS/DEEDS PROCESSED
LORAIN COUNTY TAX MAP DEPARTMENT
226 MIDDLE AVE. ELYRIA, OHIO

SURVEYED BY: N/A
CLOSURE: N/A
MAP PAGE(S): 1-00-002-D
APPROVED BY: RRM DATE: 12-7-11
SCALE: 1"= 200 PRIOR INST.: DV 386/49