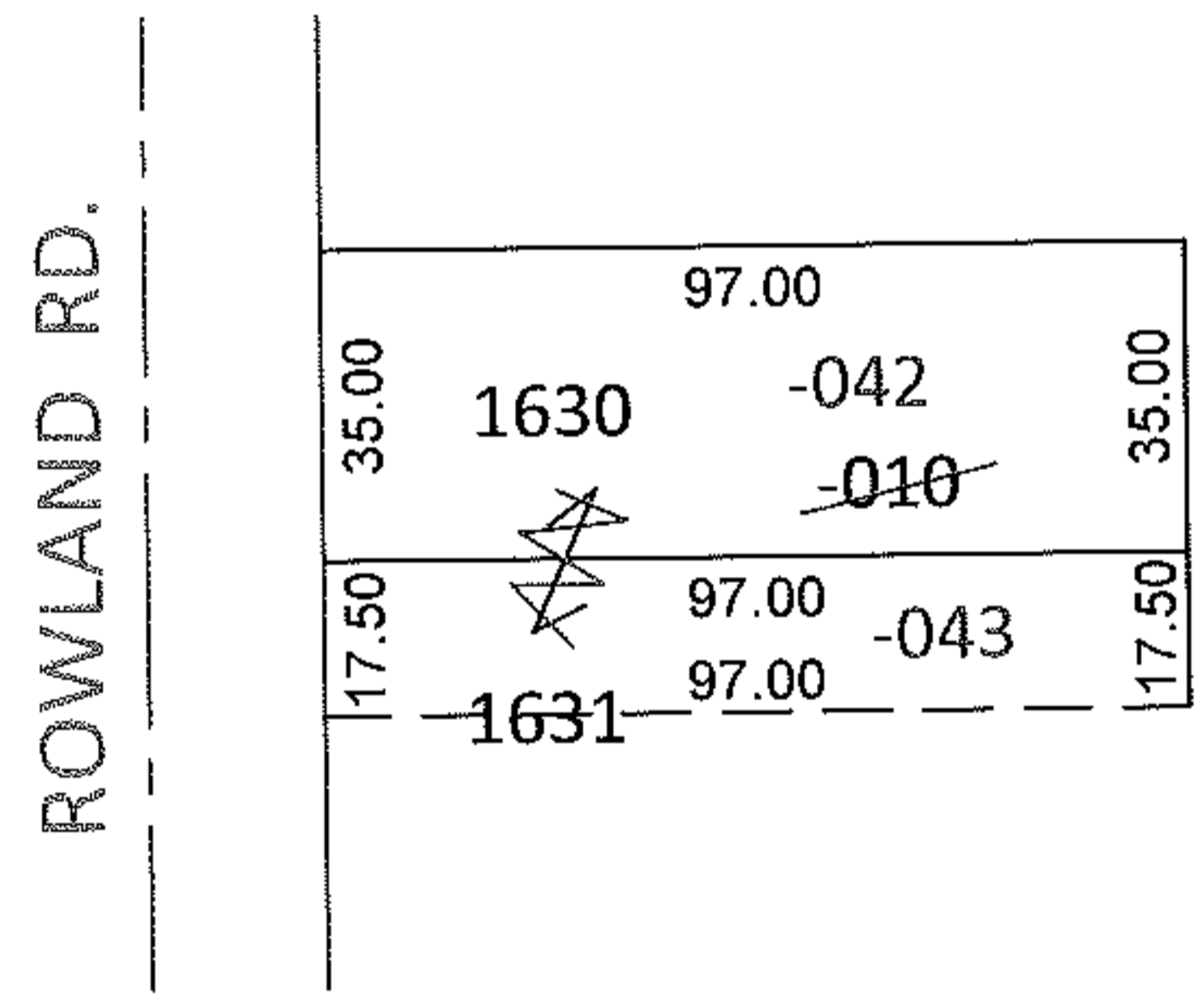
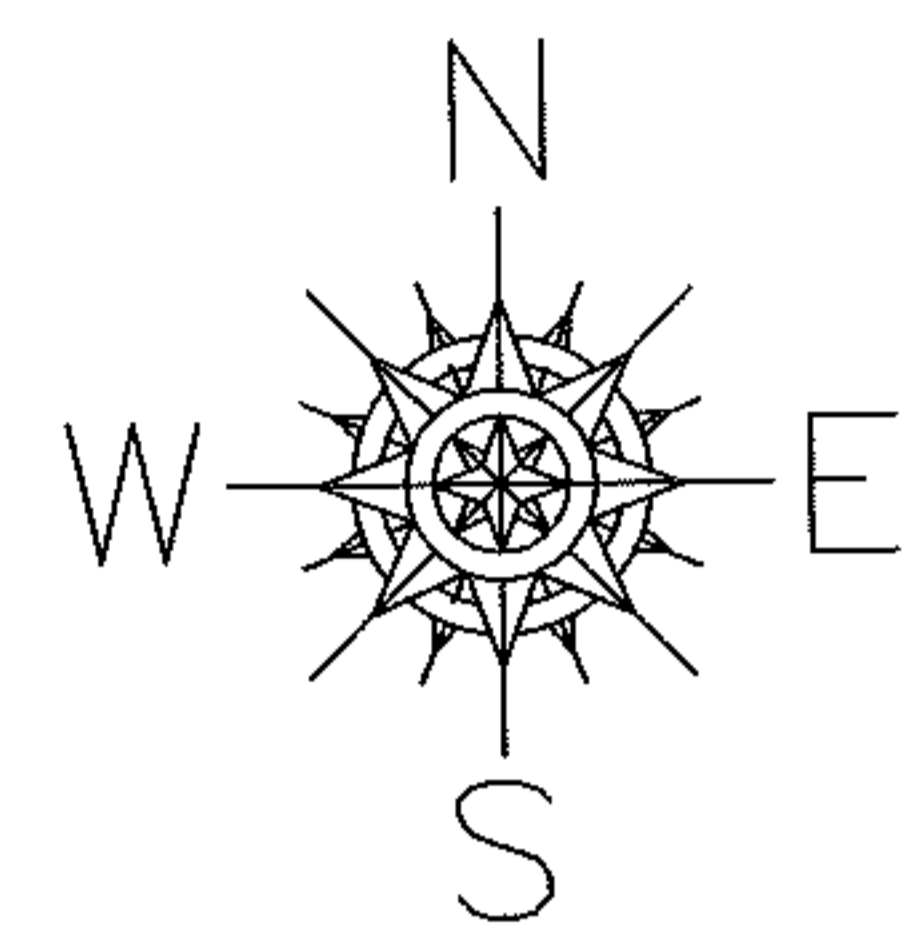


RASTER

PARENT PARCEL: 01-00-002-104-010
CHILD PARCEL: 01-00-002-104-042, -043
STARTING POINT: S/L 1630 & PART OF S/L 1631 IN VERMILION ON THE LAKE SUB.(VOL.10 PG.18)

11-02398-U



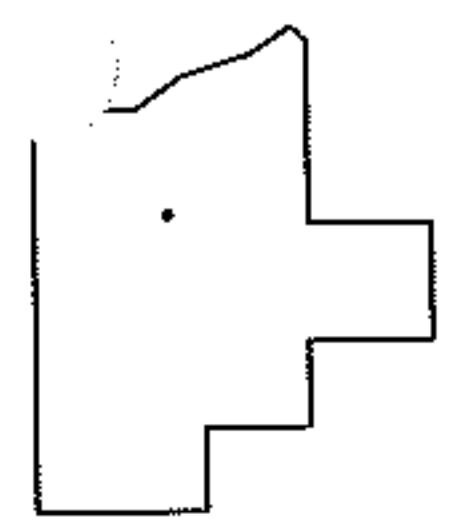
UNCOMBINATION

~~01-00-002-104-010~~
~~52.50 X 97~~

01-00-002-104-042
35 X 97

01-00-002-104-043
17.50 X 97

PER PRIOR DEEDS



SPLITS/DEEDS PROCESSED
LORAIN COUNTY TAX MAP DEPARTMENT
226 MIDDLE AVE. ELYRIA, OHIO

SURVEYED BY: N/A
CLOSURE: N/A
MAP PAGE(S): 1-00-002-A
APPROVED BY: RRM DATE: 11-29-11
SCALE: 1"= 50' PRIOR INST.: 20110388533