

RASTER

PARENT PARCEL: 09-00-087-102-005

CHILD PARCEL: XX-XX-XXX-XXX-XXX

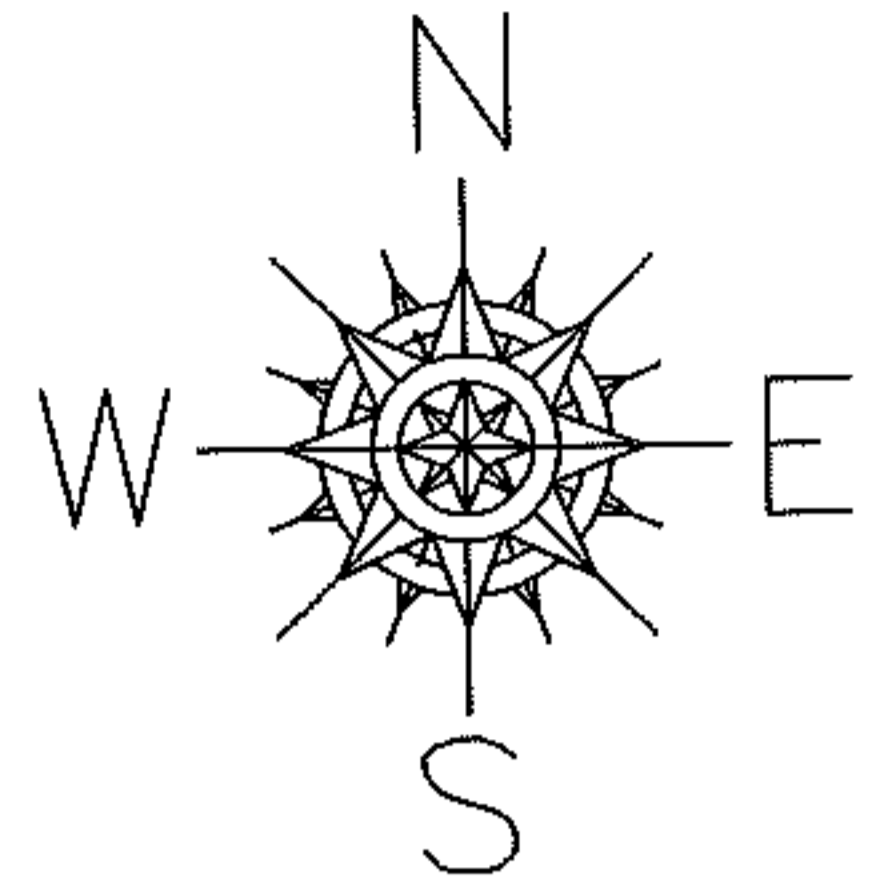
STARTING POINT: XXXXXX

11-02396-C

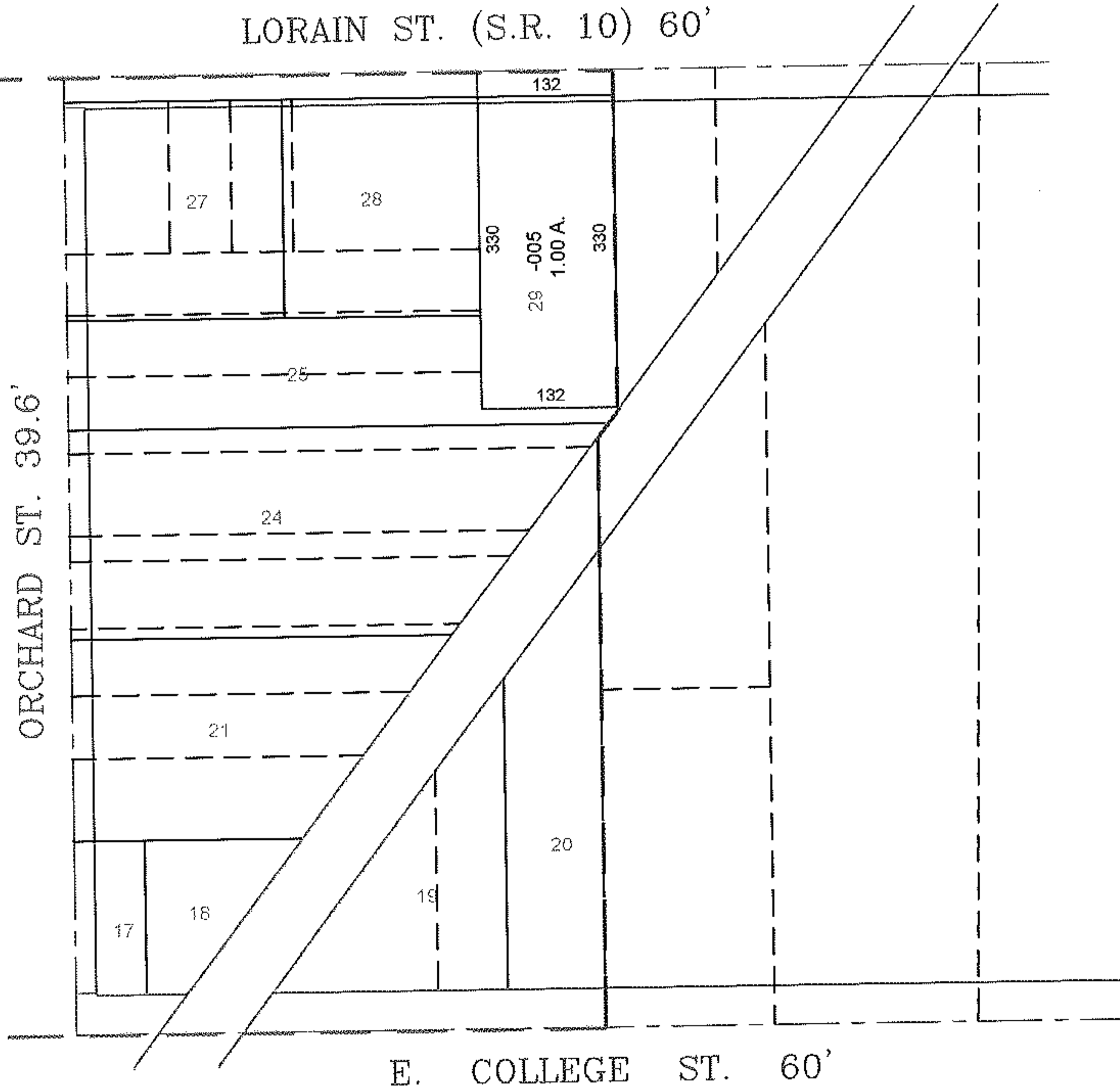
MAP CORRECTION

09-00-087-102-005

S/L 29



LORAIN ST. (S.R. 10) 60'



ORCHARD ST. 39.6'

E. COLLEGE ST. 60'

SPLITS/DEEDS PROCESSED

LORAIN COUNTY TAX MAP DEPARTMENT
226 MIDDLE AVE. ELYRIA, OHIO

SURVEYED BY: NONE

CLOSURE: PLAT

MAP PAGE(S): 09-00-087-A

APPROVED BY: TJS DATE: 11/28/11

SCALE: 1"= 200 PRIOR INST.: PV. 3 PG. 10