

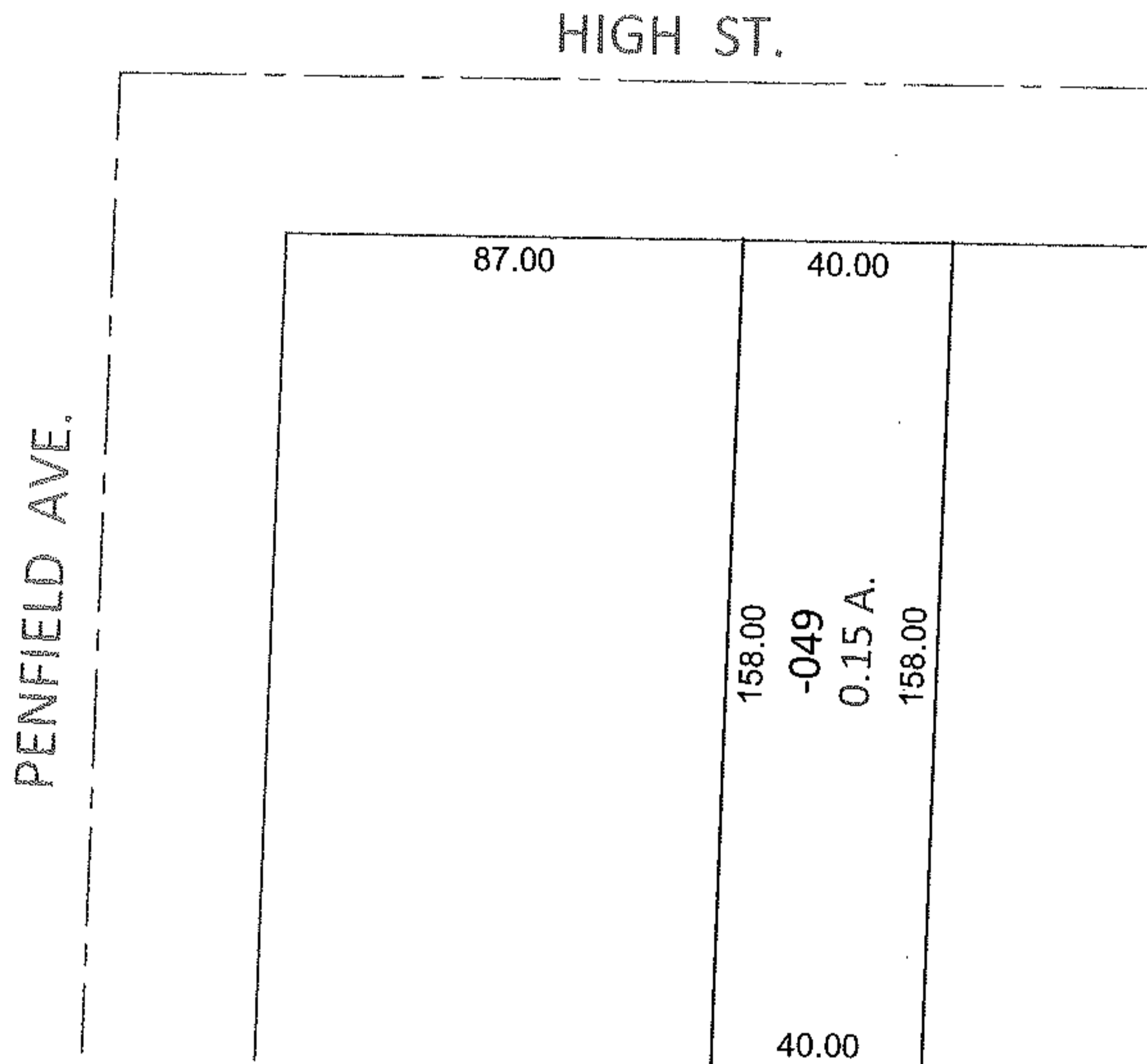
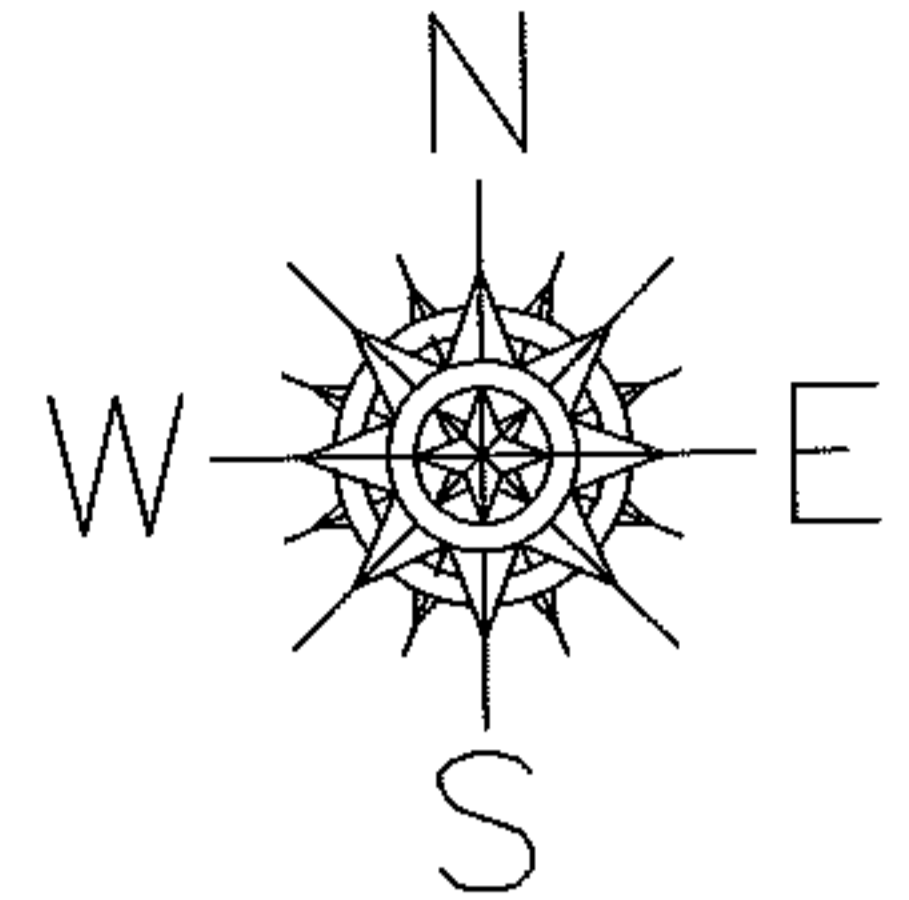
RASVER

PARENT PARCEL: 06-24-026-107-049

11-02387-A

CHILD PARCEL:

STARTING POINT: INTERSECTION OF SOUTH LINE OF HIGH ST. AND EAST LINE OF PENFIELD AVE.



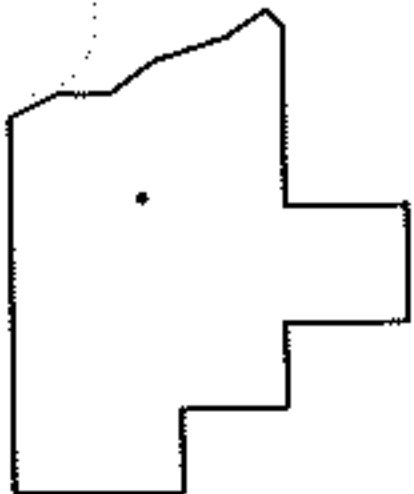
FRONTAGE AND DEPTH TO ACREAGE CORRECTION

06-24-026-107-049

0.15 A.

~~40 X 158~~

PER SURV. D. HAYWOOD



SPLITS/DEEDS PROCESSED

LORAIN COUNTY TAX MAP DEPARTMENT
226 MIDDLE AVE. ELYRIA, OHIO

SURVEYED BY: DALE R. HAYWOOD

CLOSURE: .00:10,000

MAP PAGE(S): 6-79

APPROVED BY: RRM DATE: 11-8-11

SCALE: 1"= 50' PRIOR INST.: 20050079533