

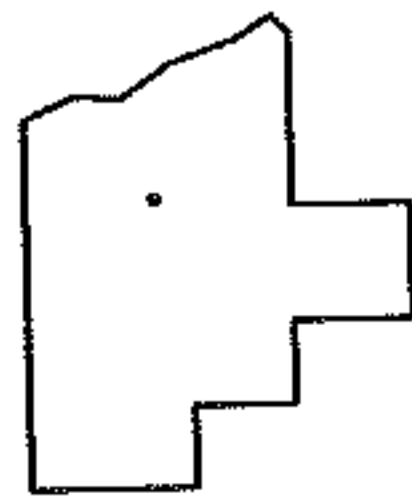
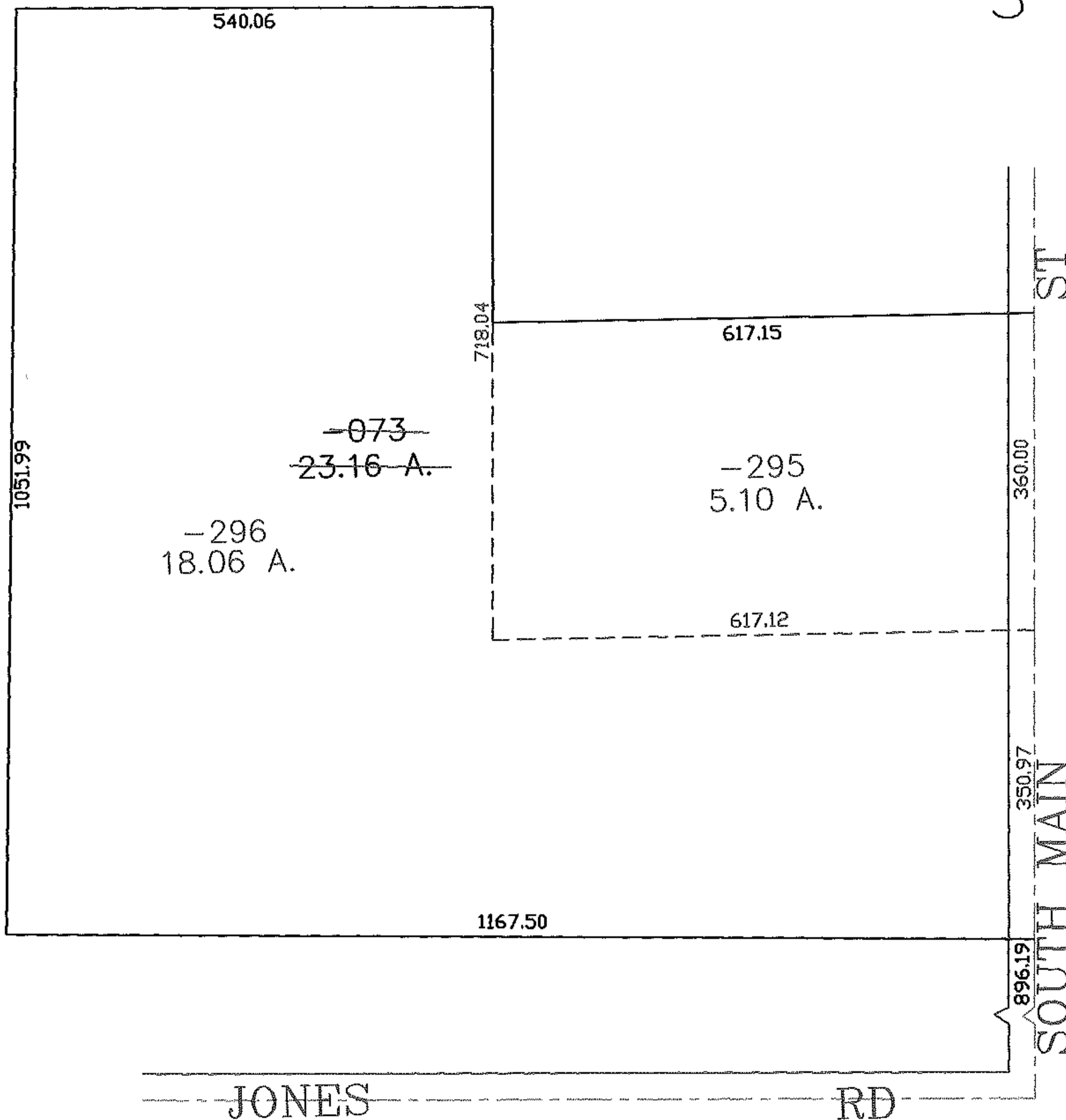
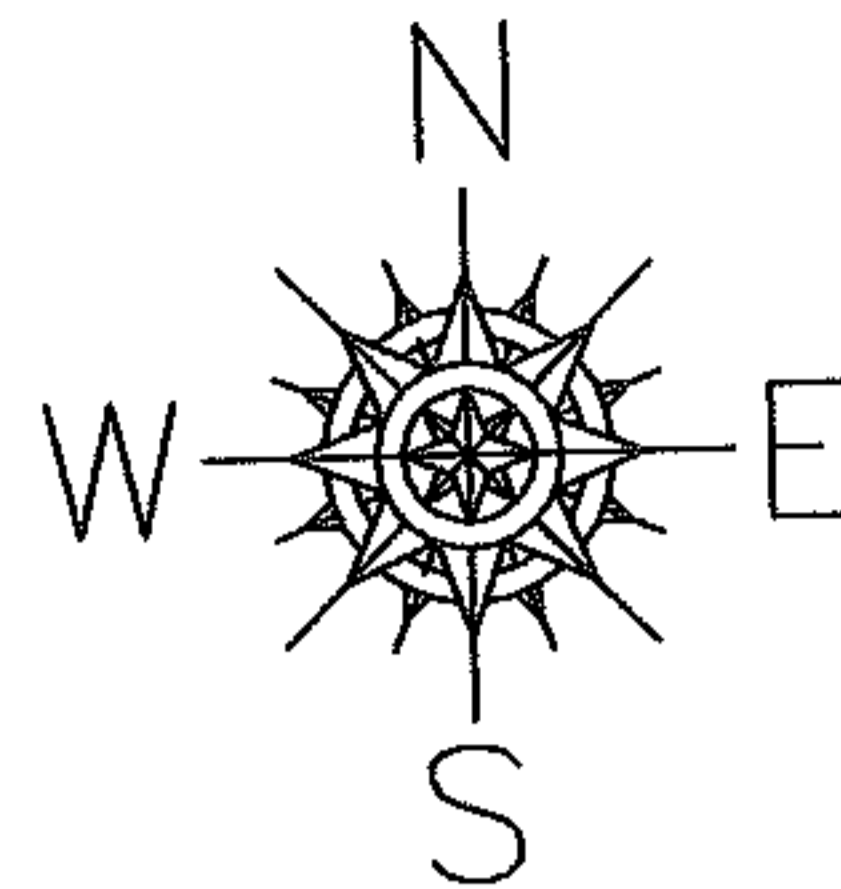
RASTER

PARENT PARCEL: 18-00-026-101-073

CHILD PARCEL: 18-00-026-101-295, -296

STARTING POINT: CENTERLINE OF SOUTH MAIN ST & JONES RD

07-02385



SPLITS/DEEDS PROCESSED
 LORAIN COUNTY TAX MAP DEPARTMENT
 226 MIDDLE AVE. ELYRIA, OHIO

SURVEYED BY: THOMAS SNEZEK
 CLOSURE: 0.00 : 10.000
 MAP PAGE(S): 18-00-026-B, D
 APPROVED BY: JAH DATE: 6-6-07
 SCALE: 1" = 200 PRIOR INSTRUMENT: 20060126874