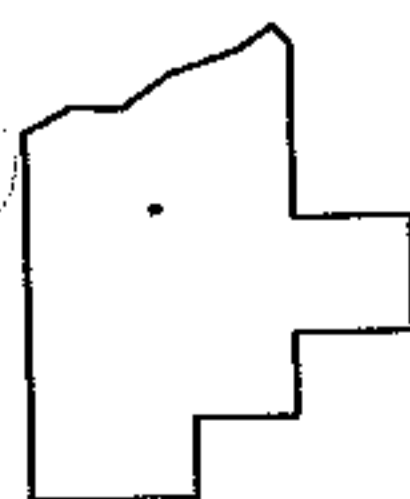
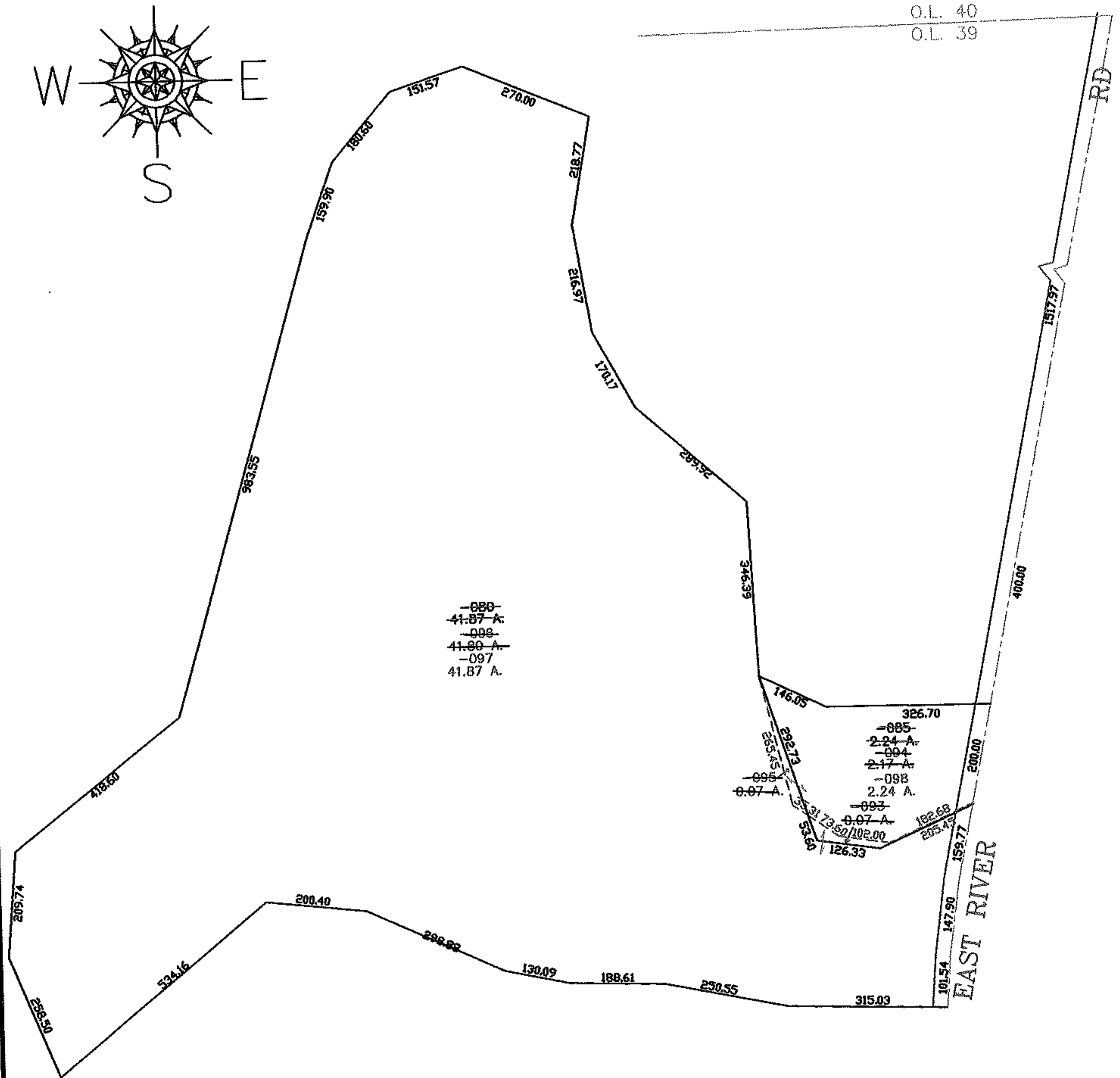
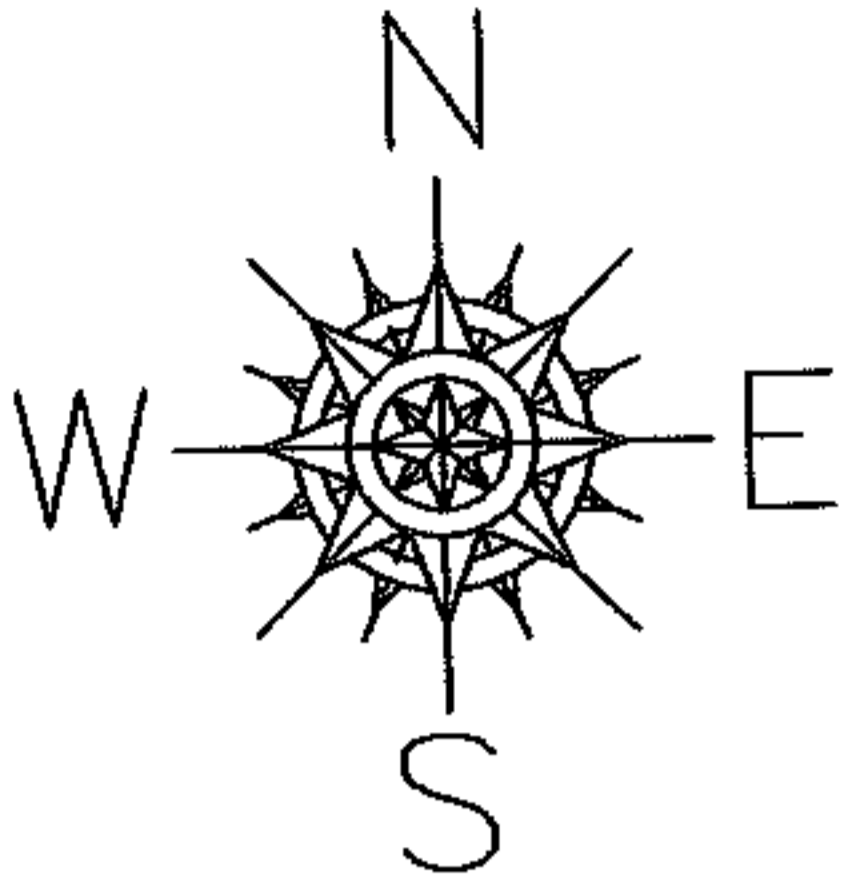


PARENT PARCEL: 12-00-039-000-085, -080  
 CHILD PARCEL: 12-00-039-000-093 THRU -098  
 STARTING POINT: CENTERLINE OF EAST RIVER RD & O.L. 39

07-02384



**SPLITS/DEEDS PROCESSED**  
 LORAIN COUNTY TAX MAP DEPARTMENT  
 226 MIDDLE AVE. ELYRIA, OHIO

SURVEYED BY: GUY P HANEY  
 CLOSURE: 0.00 : 10.000  
 MAP PAGE(S): 12-00-039-B  
 APPROVED BY: JAH DATE: 6-5-07  
 SCALE: 1" = 300 PRIOR INSTRUMENT: 20050119528