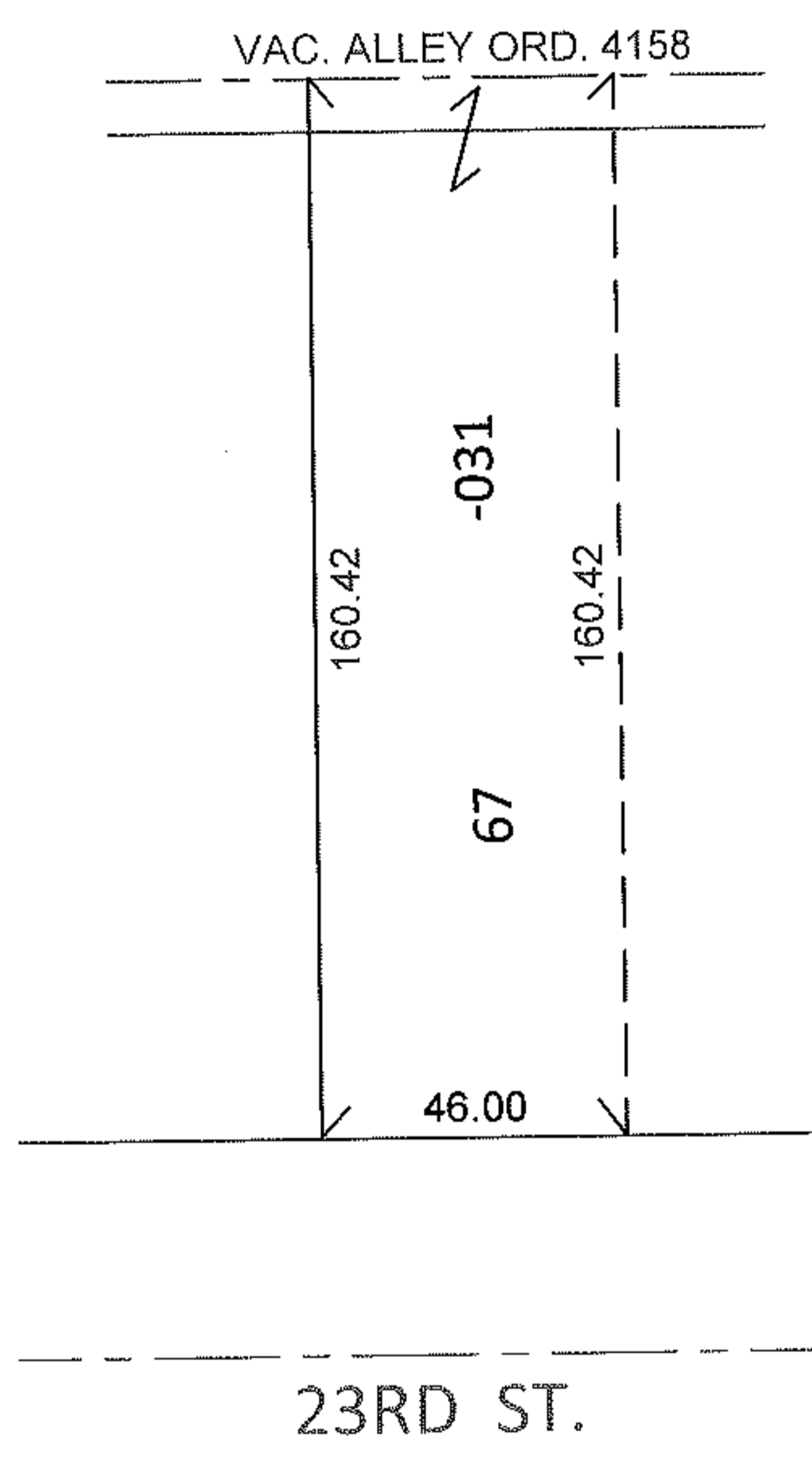
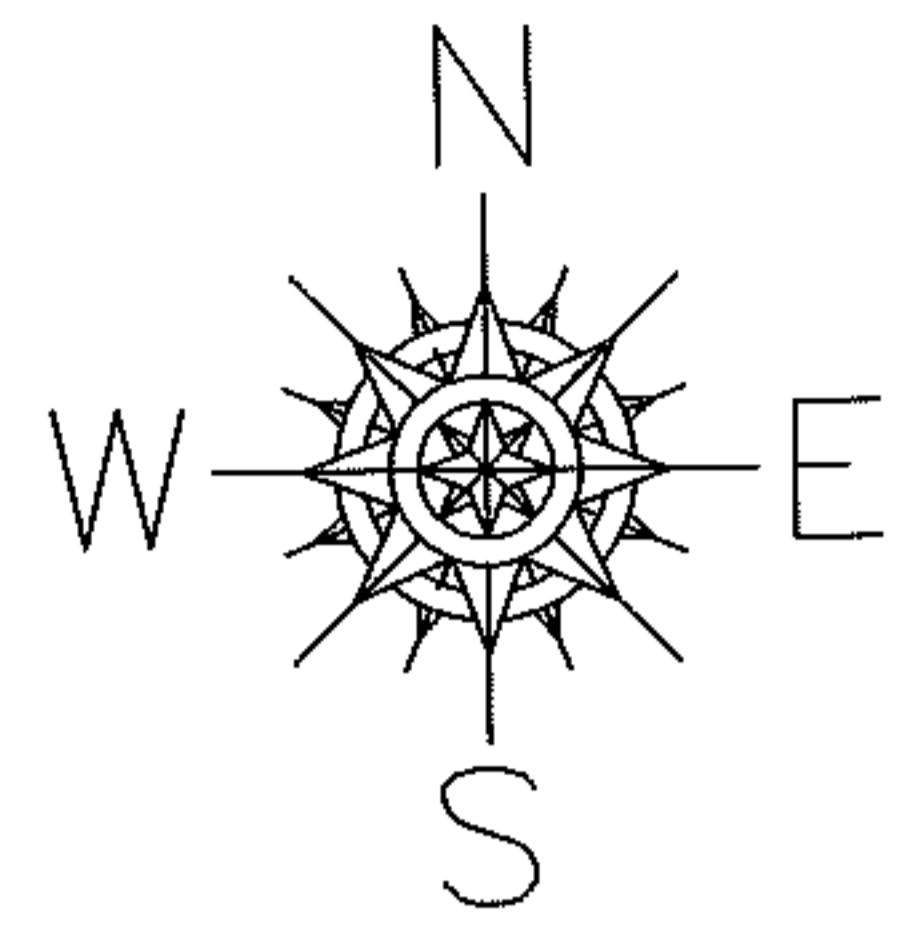


RASTER

PARENT PARCEL: 02-01-006-155-031
CHILD PARCEL:
STARTING POINT: PART OF S/L 67 IN STANG'S SECOND SUB. (VOL.4 PG.18)

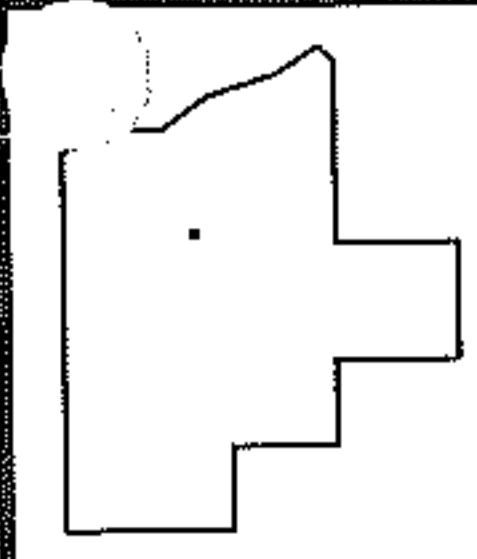
11-02384-C



DEPTH CORRECTION

02-01-006-155-031
160.42
46 X 152

CORRECTION PER PRIOR DEEDS AND VAC. ORD.



SPLITS/DEEDS PROCESSED
LORAIN COUNTY TAX MAP DEPARTMENT
226 MIDDLE AVE. ELYRIA, OHIO

SURVEYED BY: N/A
CLOSURE: N/A
MAP PAGE(S): 2-01-006-F
APPROVED BY: RRM DATE: 11-7-11
SCALE: 1"= 50' PRIOR INST.: OR 1324/28