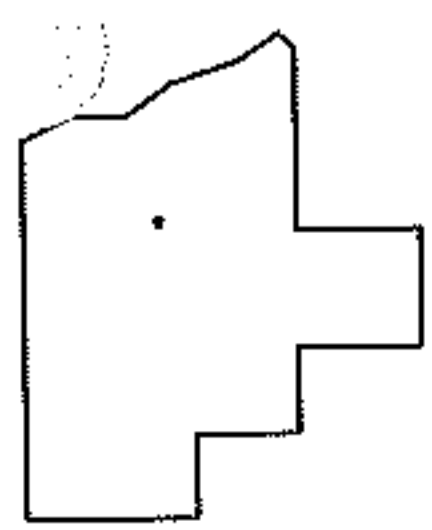
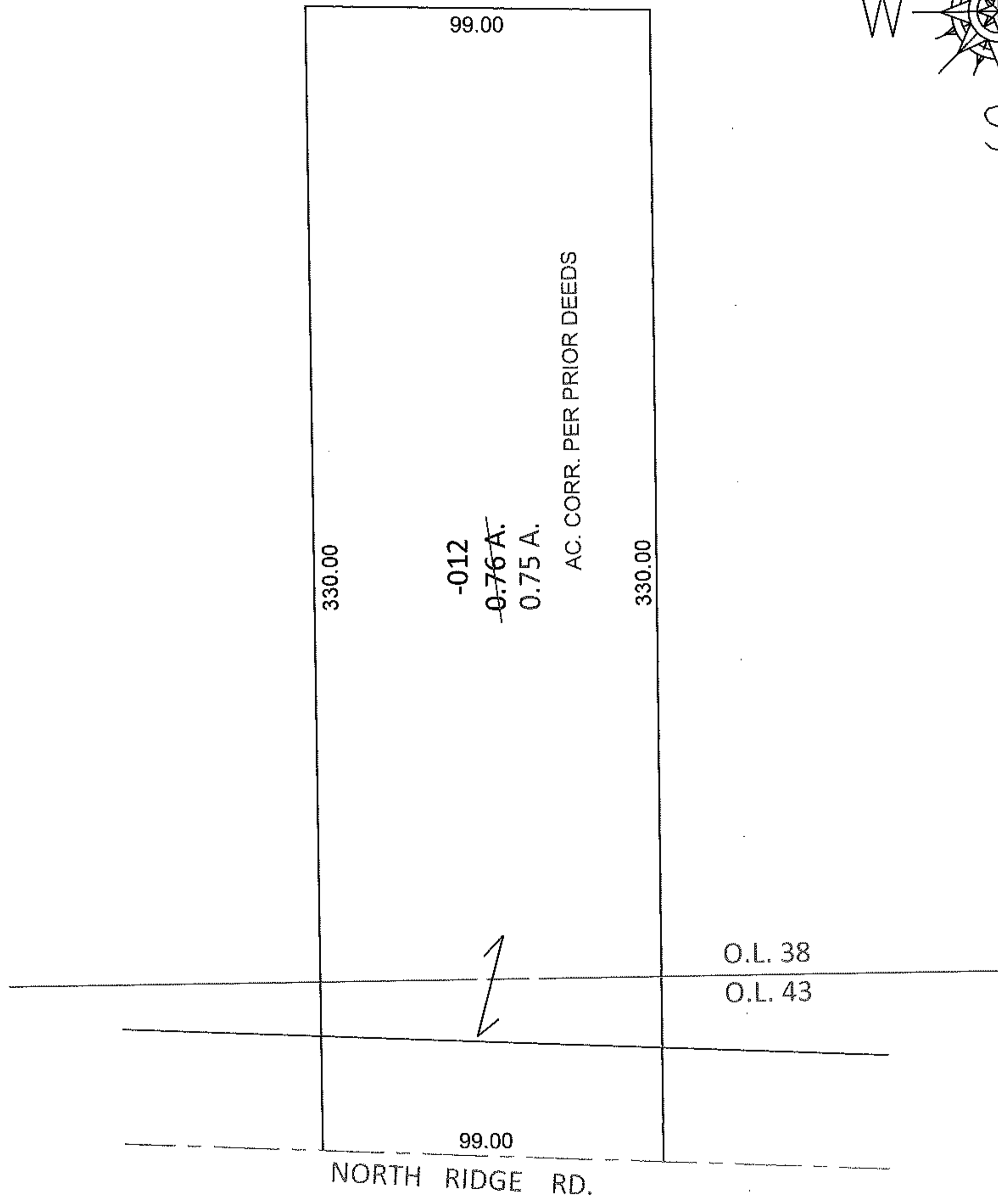
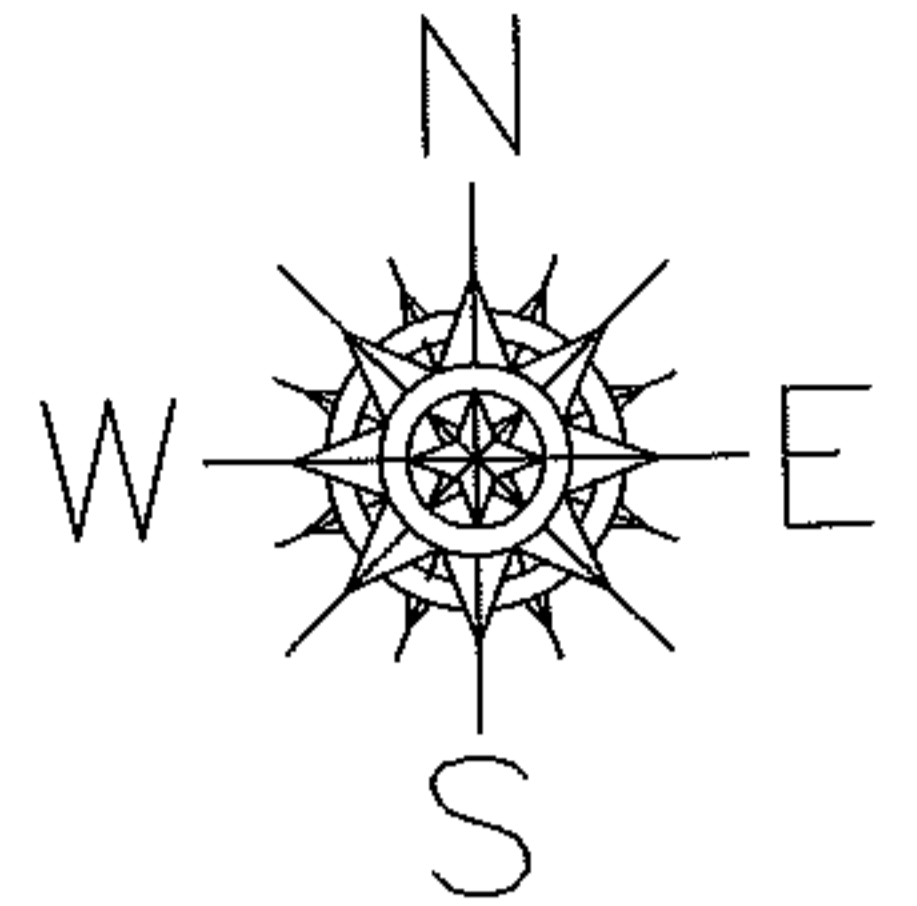


PARENT PARCEL: 01-00-038-000-012

11-02379-A

CHILD PARCEL: \_\_\_\_\_

STARTING POINT: SOUTHEAST CORNER OF LAND CONVEYED TO GILBERT A. & STEWART H. FAIRCHILD (DV 415/244)



**SPLITS/DEEDS PROCESSED**

LORAIN COUNTY TAX MAP DEPARTMENT  
226 MIDDLE AVE. ELYRIA, OHIO

SURVEYED BY: N/A

CLOSURE: N/A

MAP PAGE(S): 1-00-038-B

APPROVED BY: RRM DATE: 11-1-11

SCALE: 1"= 50' PRIOR INST.: 20010778691