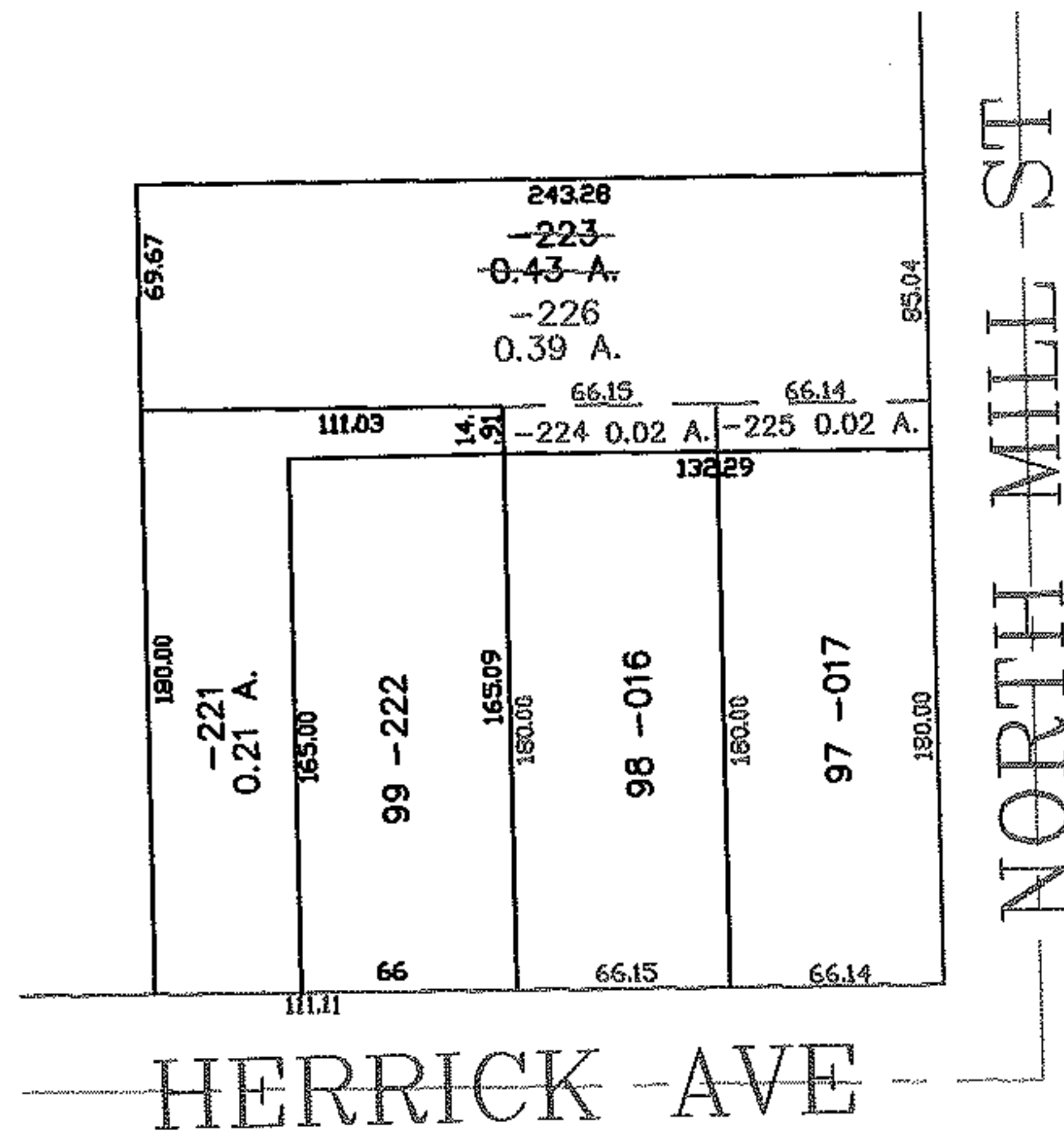
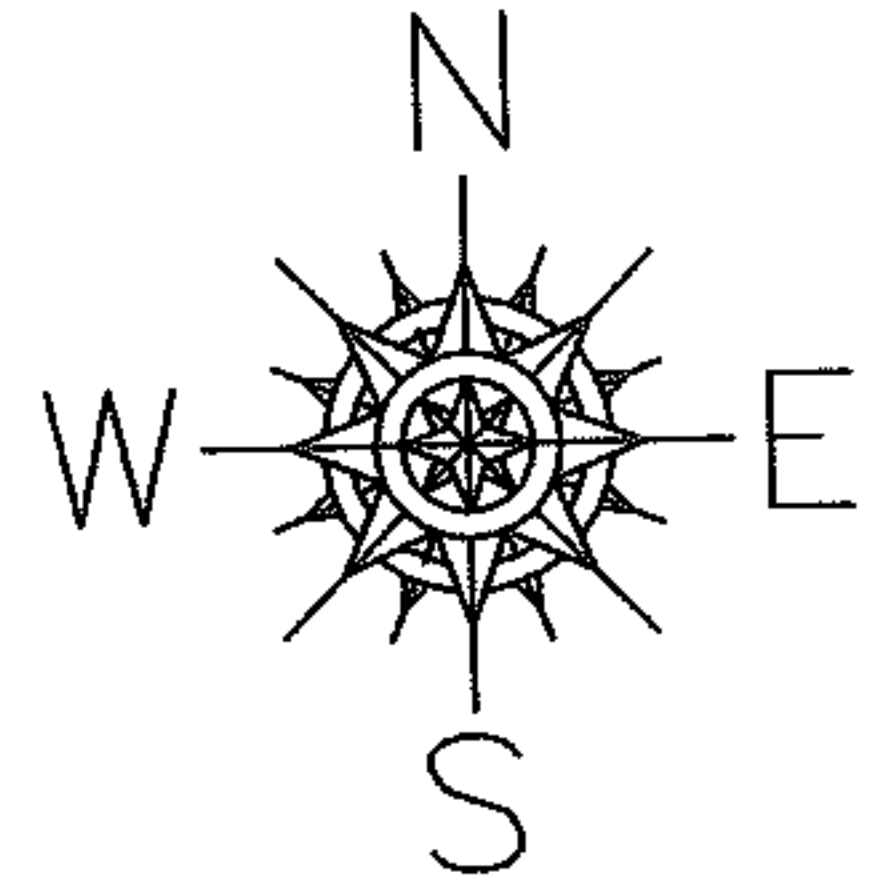


PARENT PARCEL: 18-00-028-101-016, -017, -223

CHILD PARCEL: 18-00-028-101-224 THRU -226

STARTING POINT: SIDELINE OF HERRICK AVE & NORTH MILL ST

07-02378



SPLITS/DEEDS PROCESSED

LORAIN COUNTY TAX MAP DEPARTMENT
226 MIDDLE AVE. ELYRIA, OHIO

SURVEYED BY: JAMES B ROOT

CLOSURE: 0.00 : 10.000

MAP PAGE(S): 18-00-028-C

APPROVED BY: JAH DATE: 5-25-07

SCALE: 1" = 100 PRIOR INSTRUMENT: 20060176897