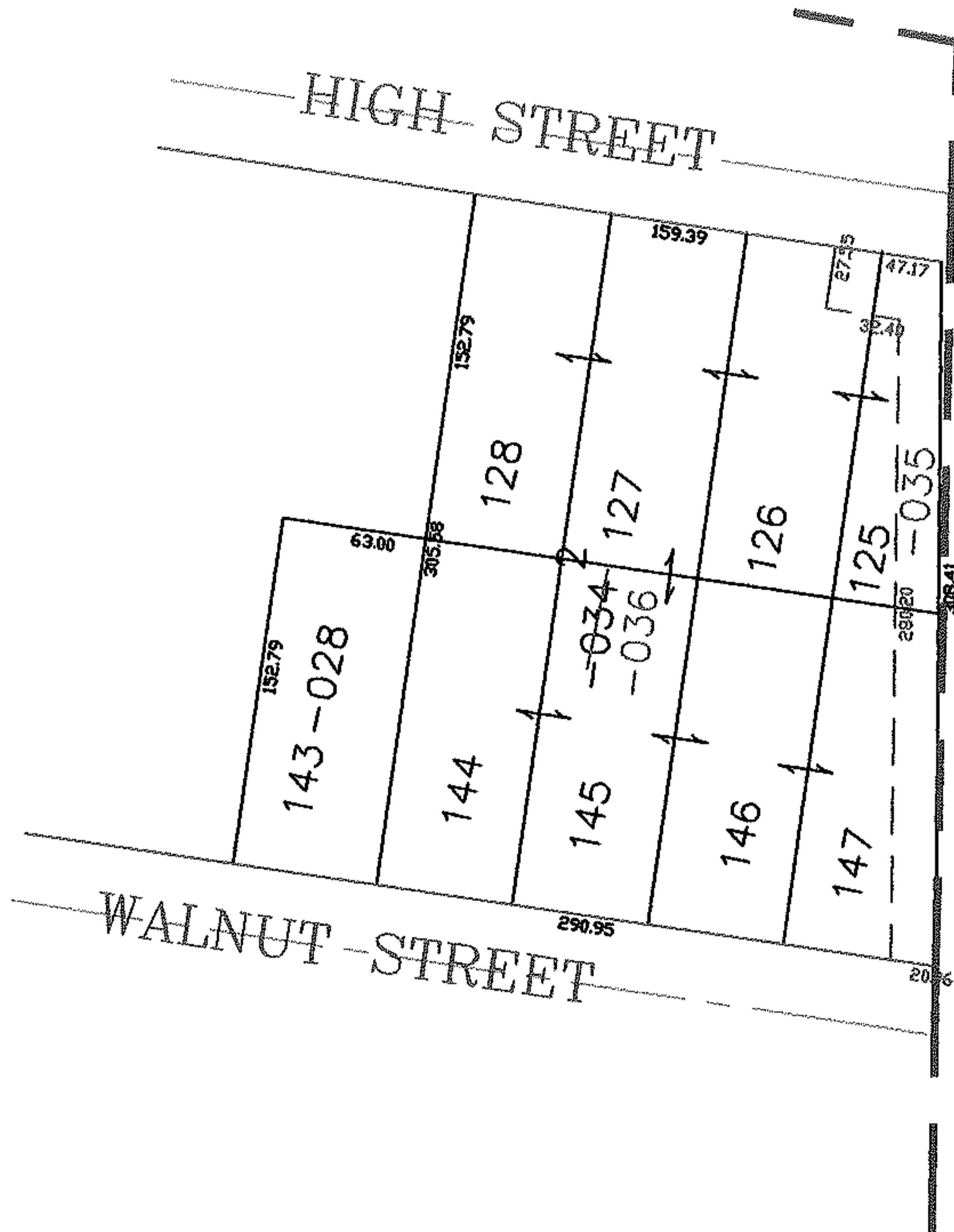
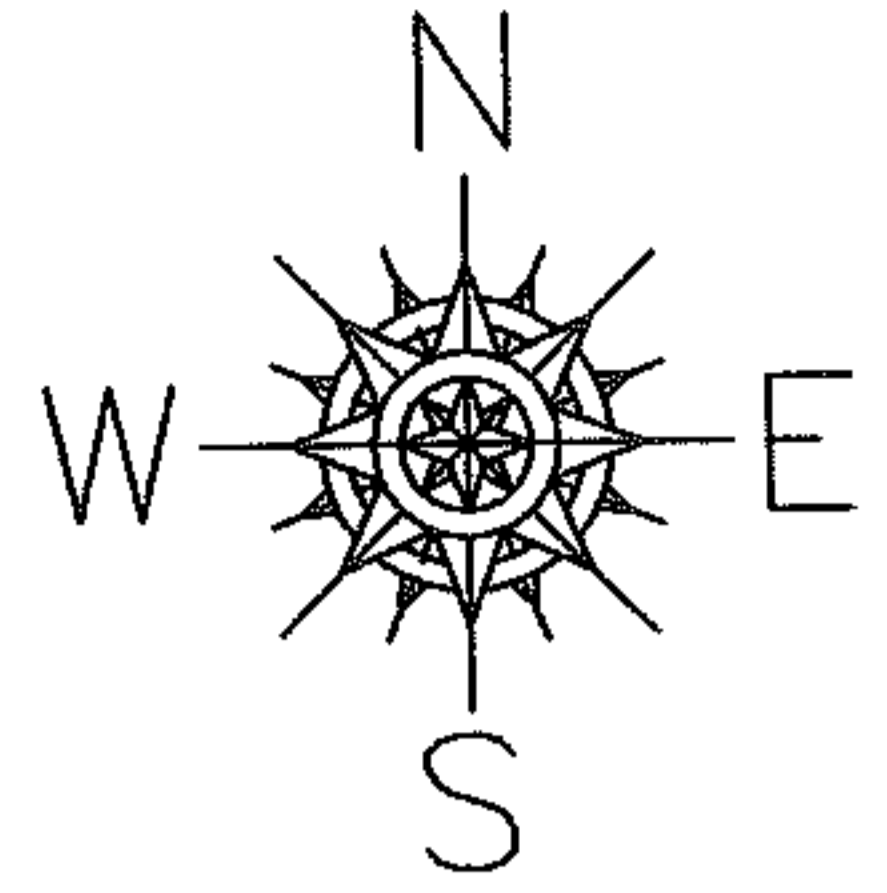


PARENT PARCEL: 06-24-027-110-034, -028

CHILD PARCEL: 06-24-027-110-035, -036

STARTING POINT: NORTHEAST CORNER OF SL 125 IN W.A. BRAMAN'S ADD

07-02372



SPLITS/DEEDS PROCESSED

LORAIN COUNTY TAX MAP DEPARTMENT  
226 MIDDLE AVE. ELYRIA, OHIO

SURVEYED BY: ROBERT G HOY

CLOSURE: 0.00 : 10.000

MAP PAGE(S): 6-80

APPROVED BY: JAH DATE: 5-15-07

SCALE: 1" = 100 PRIOR INSTRUMENT: DV 868/691