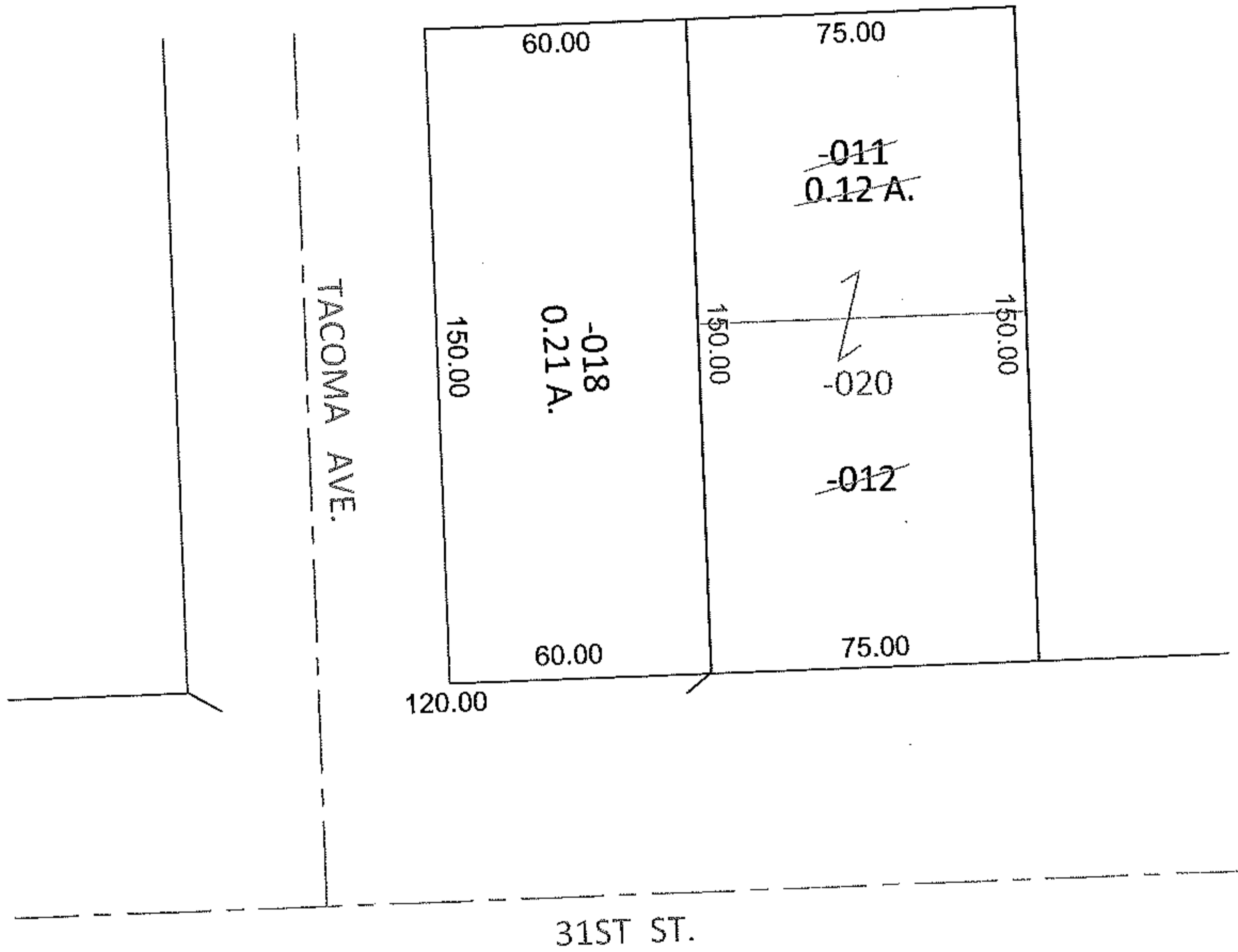
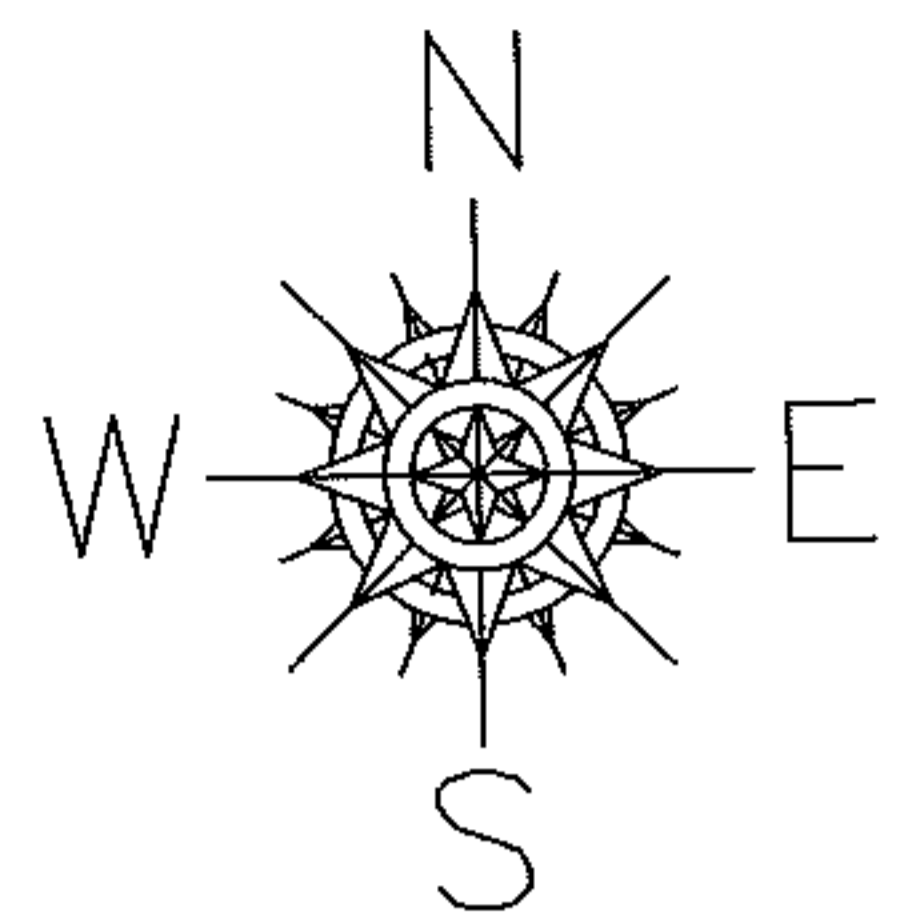


PARENT PARCEL: 03-00-082-113-011, -012  
CHILD PARCEL: 03-00-082-113-020  
STARTING POINT: INTERSECTION OF NORTH LINE OF 31ST. ST. AND WEST LINE OF TACOMA AVE.

11-02369-C

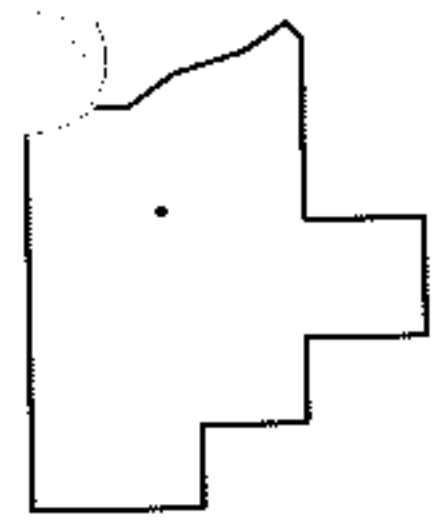


COMBINATION PER PRIOR DEEDS

~~03-00-082-113-011~~  
~~0.12 A.~~

~~03-00-082-113-012~~  
~~75 X 80~~

03-00-082-113-020  
75 X 150



SPLITS/DEEDS PROCESSED  
LORAIN COUNTY TAX MAP DEPARTMENT  
226 MIDDLE AVE. ELYRIA, OHIO

SURVEYED BY: N/A  
CLOSURE: .00:10,000  
MAP PAGE(S): 3-00-081-B  
APPROVED BY: RRM DATE: 10-17-11  
SCALE: 1"= 50' PRIOR INST.: 20110386643