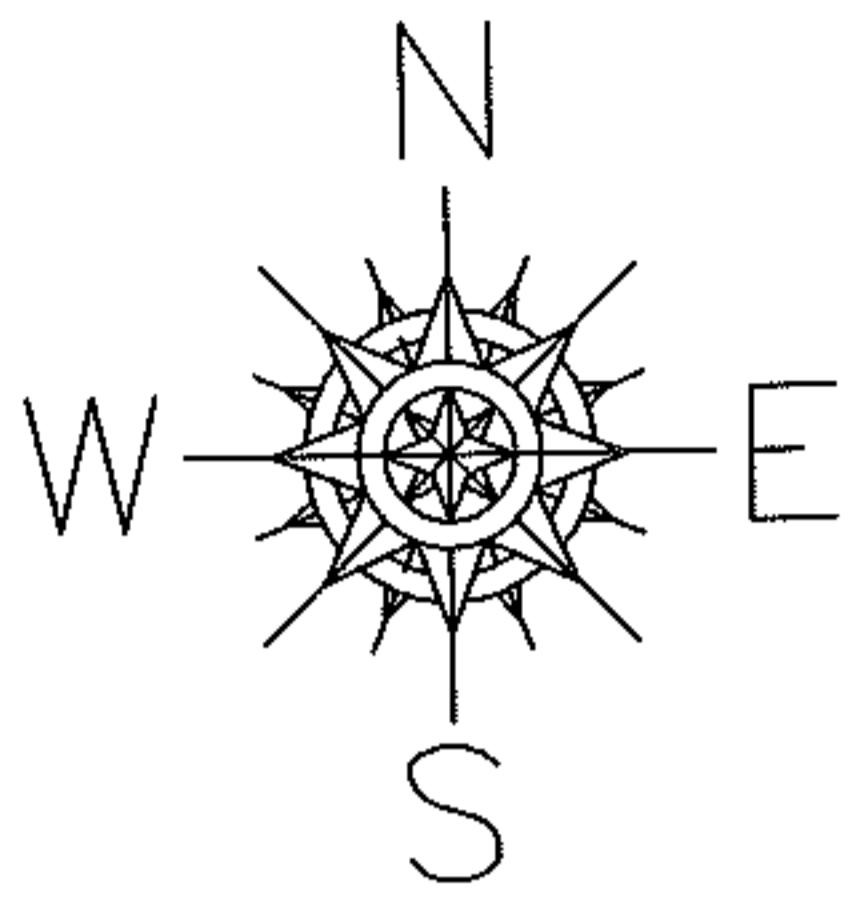
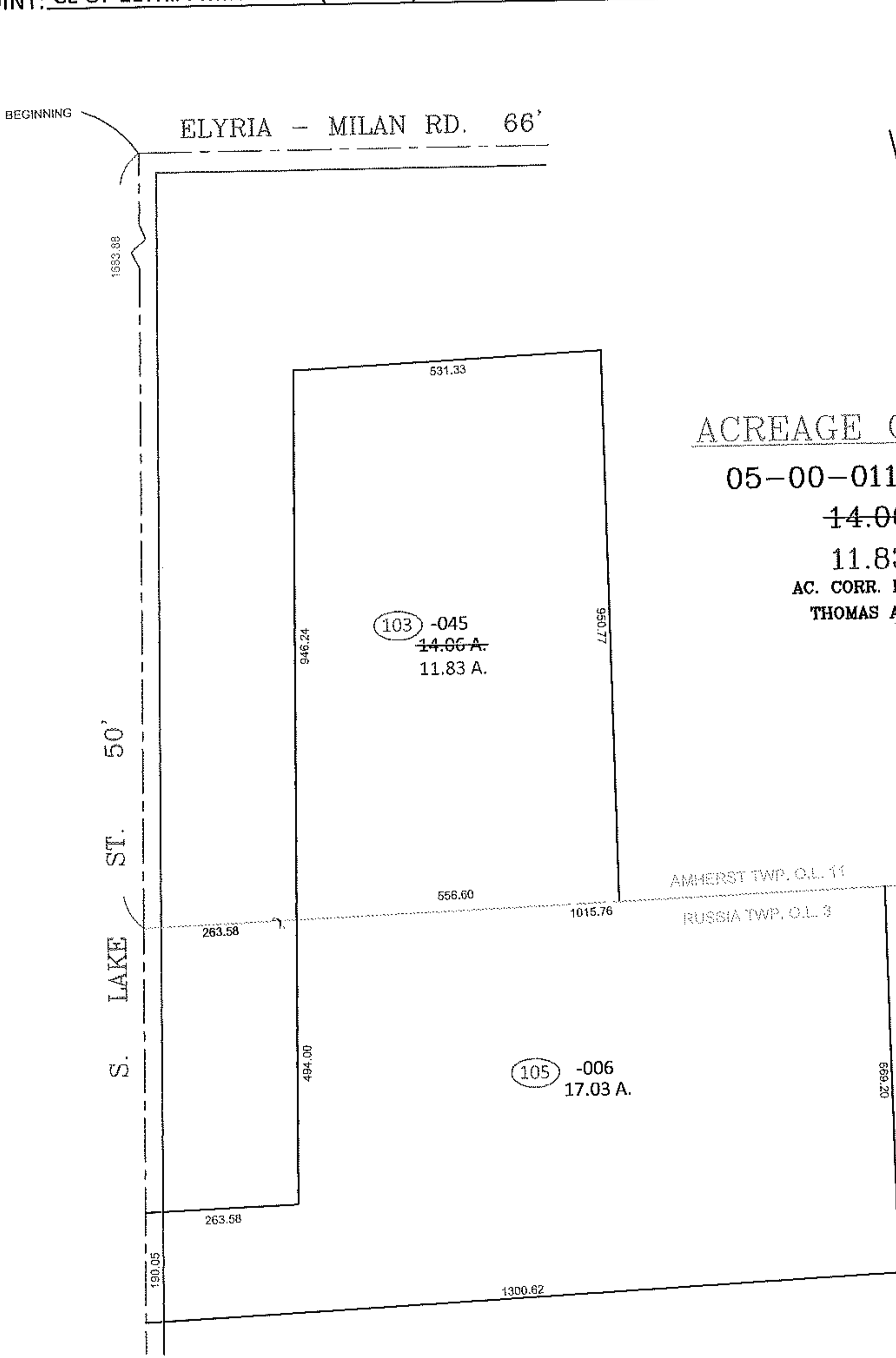


PARENT PARCEL: 05-00-011-103-045 & 09-00-003-105-006
CHILD PARCEL: XX-XX-XXX-XXX-XXX
STARTING POINT: CL OF ELYRIA-MILAN RD. (S.R. 113) & CL OF S. LAKE ST.

11-02368-A



ACREAGE CORRECTION

05-00-011-103-045
~~14.06 A.~~
11.83 A.
AC. CORR. PER SURV.
THOMAS A. SIMON

SPLITS/DEEDS PROCESSED

LORAIN COUNTY TAX MAP DEPARTMENT
226 MIDDLE AVE. ELYRIA, OHIO

SURVEYED BY: THOMAS A. SIMON
CLOSURE: 0.01 : 10,000
MAP PAGE(S): 09-00-003-B & 5-00-011-A
APPROVED BY: TJS DATE: 10/21/11
SCALE: 1" = 300 PRIOR INST.: 20110385011