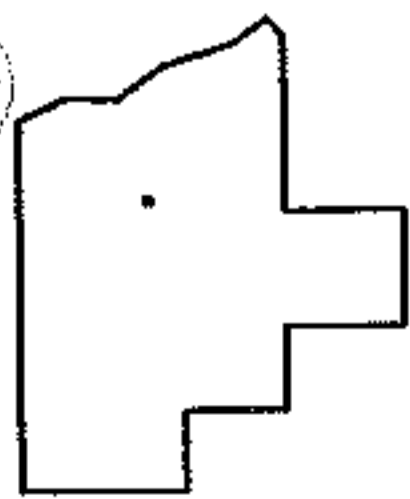
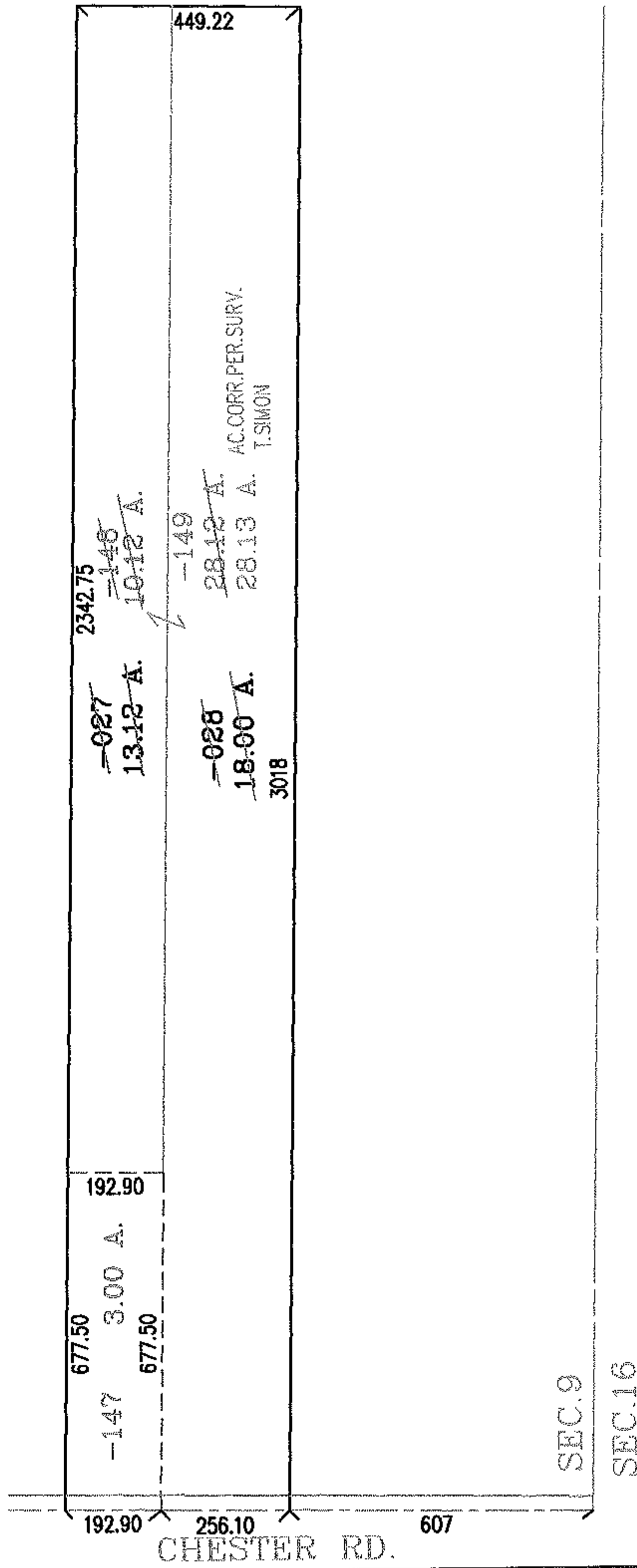
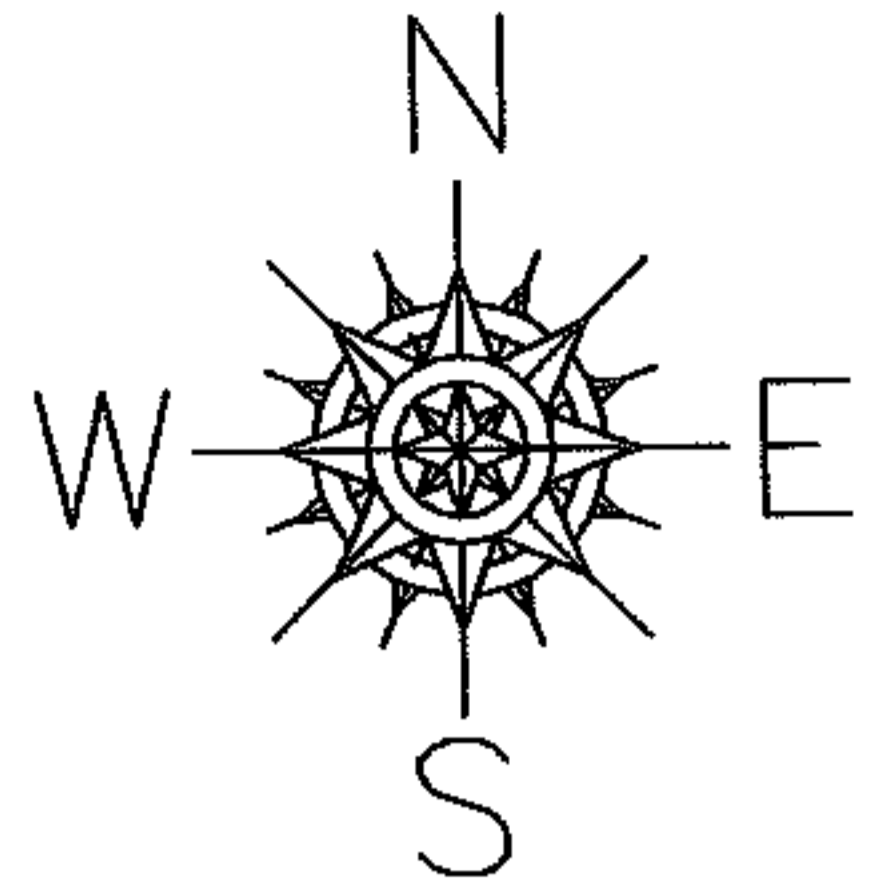


PARENT PARCEL: 04-00-009-000-027,-028
CHILD PARCEL: 04-00-009-000-147 THRU -149
STARTING POINT: INTERSETION OF EAST LINE OF SEC. 9 AND C/L OF CHESTER RD.

07-02354



SPLITS/DEEDS PROCESSED
LORAIN COUNTY TAX MAP DEPARTMENT
226 MIDDLE AVE. ELYRIA, OHIO

SURVEYED BY: THOMAS A. SIMON
CLOSURE: .00:10.000
MAP PAGE(S): 4-00-009-H
APPROVED BY: RRM DATE: 4/11/07
SCALE: 1" = 400 PRIOR INSTRUMENT: 20070188869